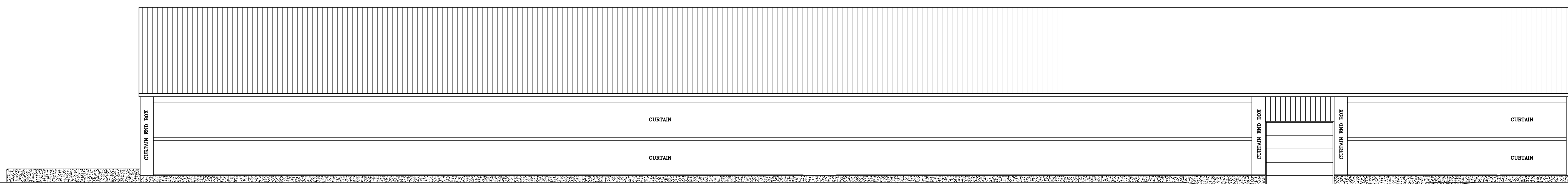


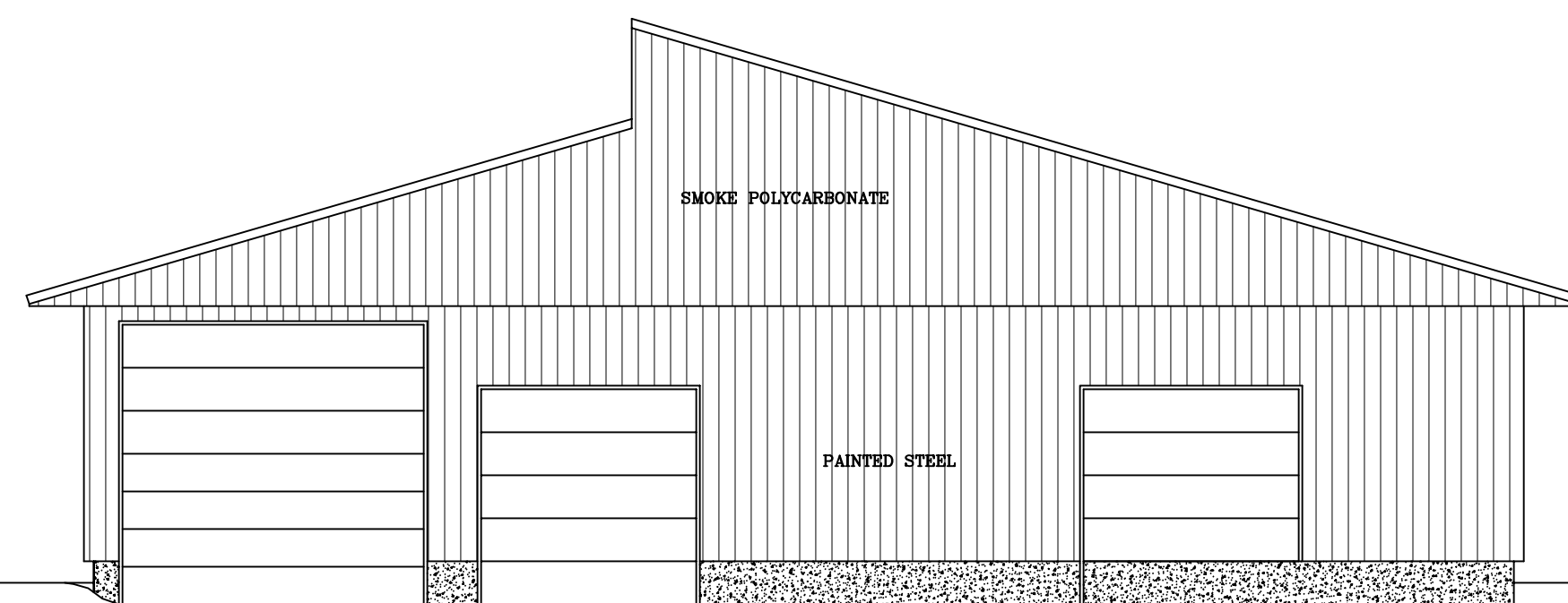
SOUTH ELEVATION

SCALE: 1/8" = 1'-0"



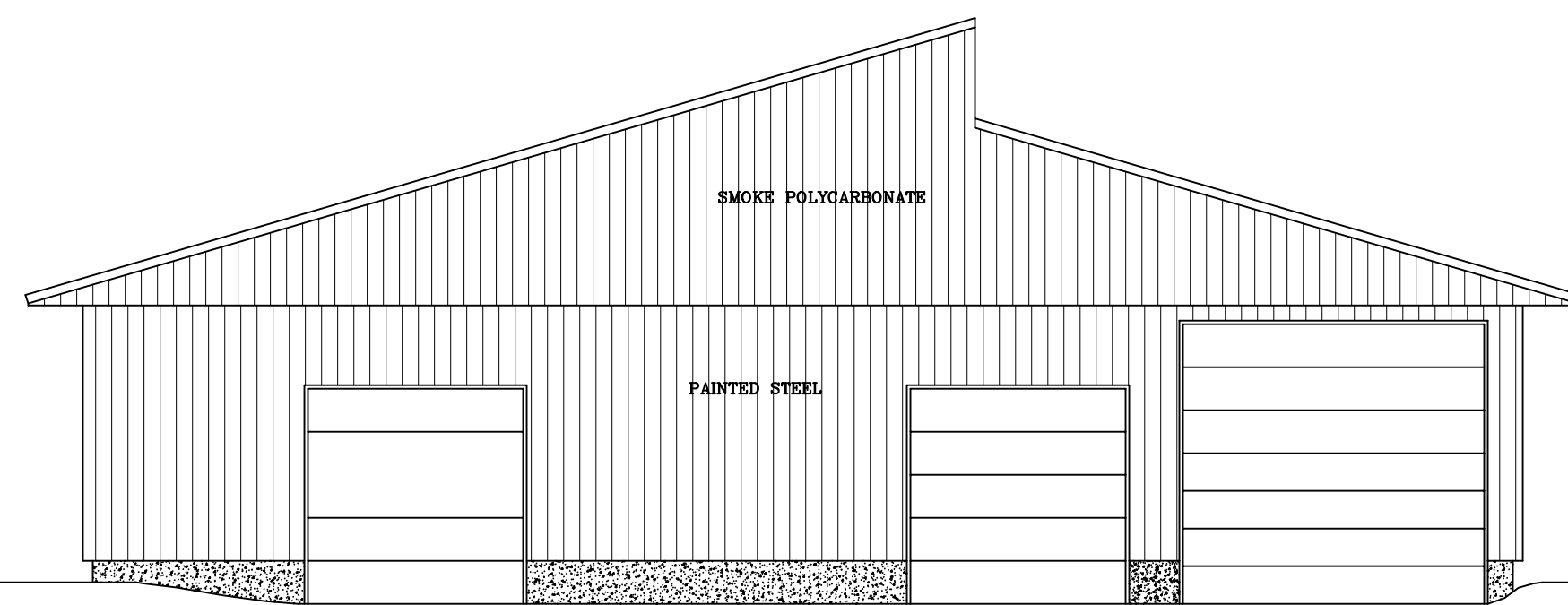
NORTH ELEVATION

SCALE: 1/8" = 1'-0"



EAST ELEVATION

SCALE: 1/8" = 1'-0"



WEST ELEVATION

SCALE: 1/8" = 1'-0"

DESIGN LOADS		
SNOW LOAD	GROUND SNOW LOAD (Pg) =	50 PSF
	SNOW EXPOSURE FACTOR (Ce) =	.8
	SNOW LOAD IMPORTANCE FACTOR (Is0) =	1.2
	ROOF THERMAL FACTOR (Ct) =	1.0
	SLOPED ROOF SNOW LOAD =	31.5 PSF
	DRIFT AT RIDGE =	59.9 PSF
	LEEWARD SNOW LOAD =	9.5 PSF
ROOF TRUSS DESIGN	TOP CHORD LIVE LOAD =	31.5 PSF
	TOP CHORD DEAD LOAD =	5 PSF
	BOTTOM CHORD DEAD LOAD =	3.5 PSF
WIND- MAIN WIND FORCE- ULTIMATE LOADS	WIND SPEED =	105 mph
	EXPOSURE CATEGORY =	c
	WIND IMPORTANCE FACTOR (I) =	1.0
	ENCLOSED BUILDING =	YES
	INTERIOR ZONE WALLS =	20.2 PSF
	END ZONE WALLS =	30.3 PSF
WIND- COMPONENTS & CLADDING- ULTIMATE LOADS- BASED ON 10 SQUARE FOOT TRIBUTARY AREA	INTERIOR ZONE ROOF =	-4.8 PSF
	END ZONE ROOF =	-8.6 PSF
	ROOF =	-23.4 PSF
	EDGE =	-40.7 PSF
	CORNER =	-60.1 PSF
	POSITIVE =	16 PSF
SEISMIC LOAD	WALLS =	-27.7 PSF
	END ZONE =	-34.2 PSF
	POSITIVE =	25.5 PSF
CONCRETE REQUIREMENTS	Ss =	.046
	S1 =	.033
	Sds =	.049
	Sd1 =	.053
	SLAB ON GRADE COMPRESSIVE STRENGTH MINIMUM PSI @ 28 DAYS =	3500 PSI
SOILS INFORMATION	FOOTING FOUNDATIONS COMPRESSIVE STRENGTH MINIMUM PSI @ 28 DAYS =	3500 PSI
	WALL COMPRESSIVE STRENGTH MINIMUM PSI @ 28 DAYS =	3500 PSI
	CONCRETE REINFORCING- USE 3/8" & 1/2" GLASS FIBER REINFORCED POLYMER BARS	119 KSI
	CLASS OF MATERIALS =	4 FIRM
	ALLOWABLE SOIL BEARING PRESSURE =	2000 PSF

TO THE BEST OF MY PROFESSIONAL KNOWLEDGE, JUDGEMENT, AND BELIEF, THIS DESIGN AND THESE CONSTRUCTION PLANS MEET NRCS 367, ROOFS AND COVERS. BOB LEWERENZ, BESTIMATE LLC, STEVE KAISER P.E., LARSON ENGINEERING.

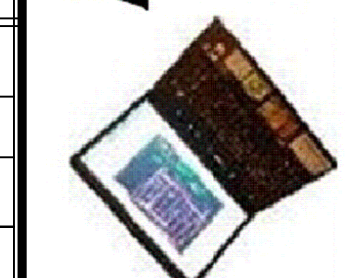
BUILDING DESIGN PROFESSIONAL'S SEAL

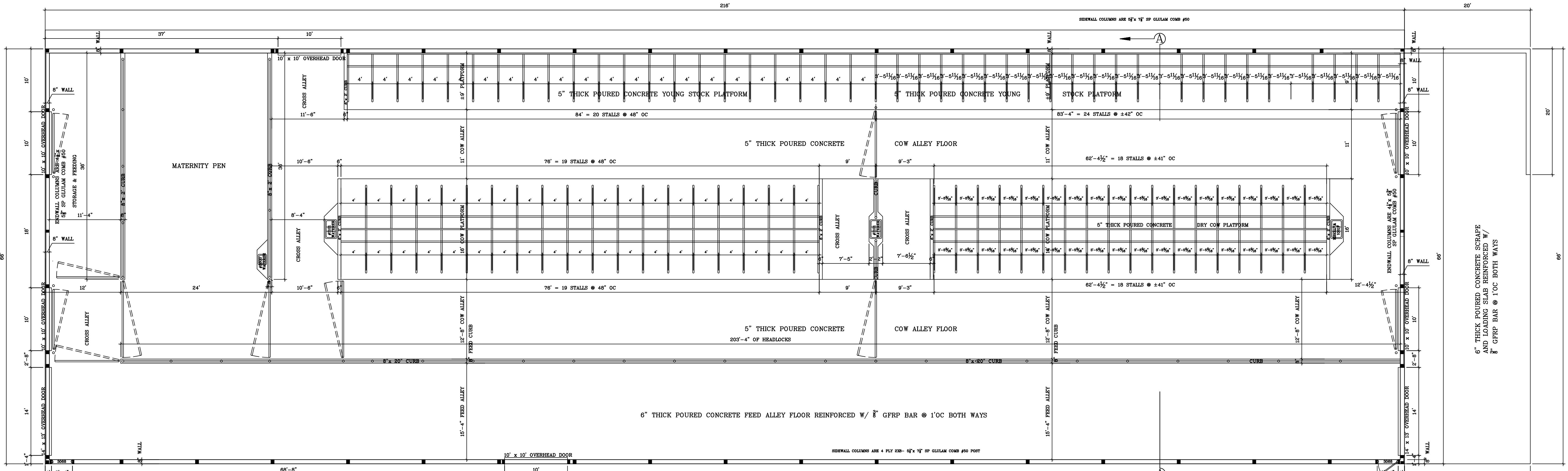
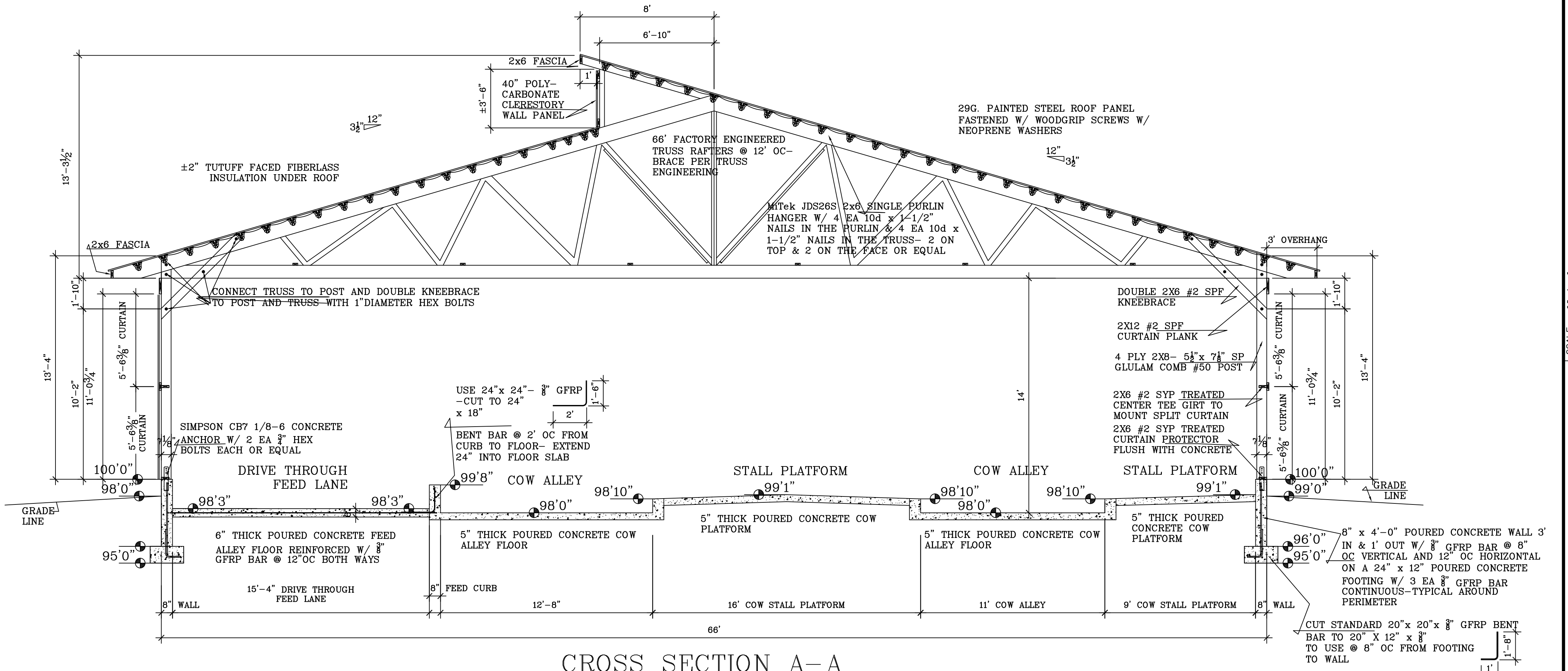
SHEET INDEX	
PAGE	CONTENTS
1 of 3	DESIGN LOADS & ELEVATIONS
2 of 3	FLOOR PLANS & CROSS SECTION
3 of 3	FOUNDATION PLAN & CONCRETE DETAILS

SCALE: Noted
DATE: 2jan19
NAME: BL
DWG. NO.: 19-339
CADFILE:
REVISIONS: 23JAN19, 28JAN19, 27FEB19, 28mar19, 18apr19, 9MAY19, 21aug19, 23mar20, 26jun20, 2jul20, 9jul20, 16jul20, 28aug20, 16dec20, 12JAN21

PROPOSED BARN FOR

BESTIMATE LLC
http://bestimatellc.com
714 E Ninth St
Marshfield, WI 54449





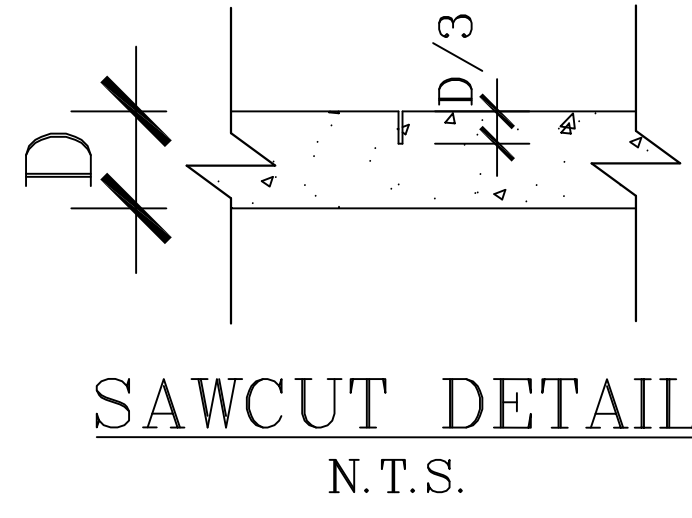
SCALE	Noted
DATE	2jan19
NAME	BL
DWG. NO.	19-339
CADFILE	
REVISIONS:	23JAN19 28JAN19 27FEB19 28mar19 18apr19 9MAY19 21aug19 23mar20 26jun20 2jul20 9jul20 16jul20 28aug20 16dec20 12JAN21

PROPOSED BARN FOR

BESTIMATE LLC
http://bestimatellc.com
714 E Ninth St
Marshfield, WI 54449

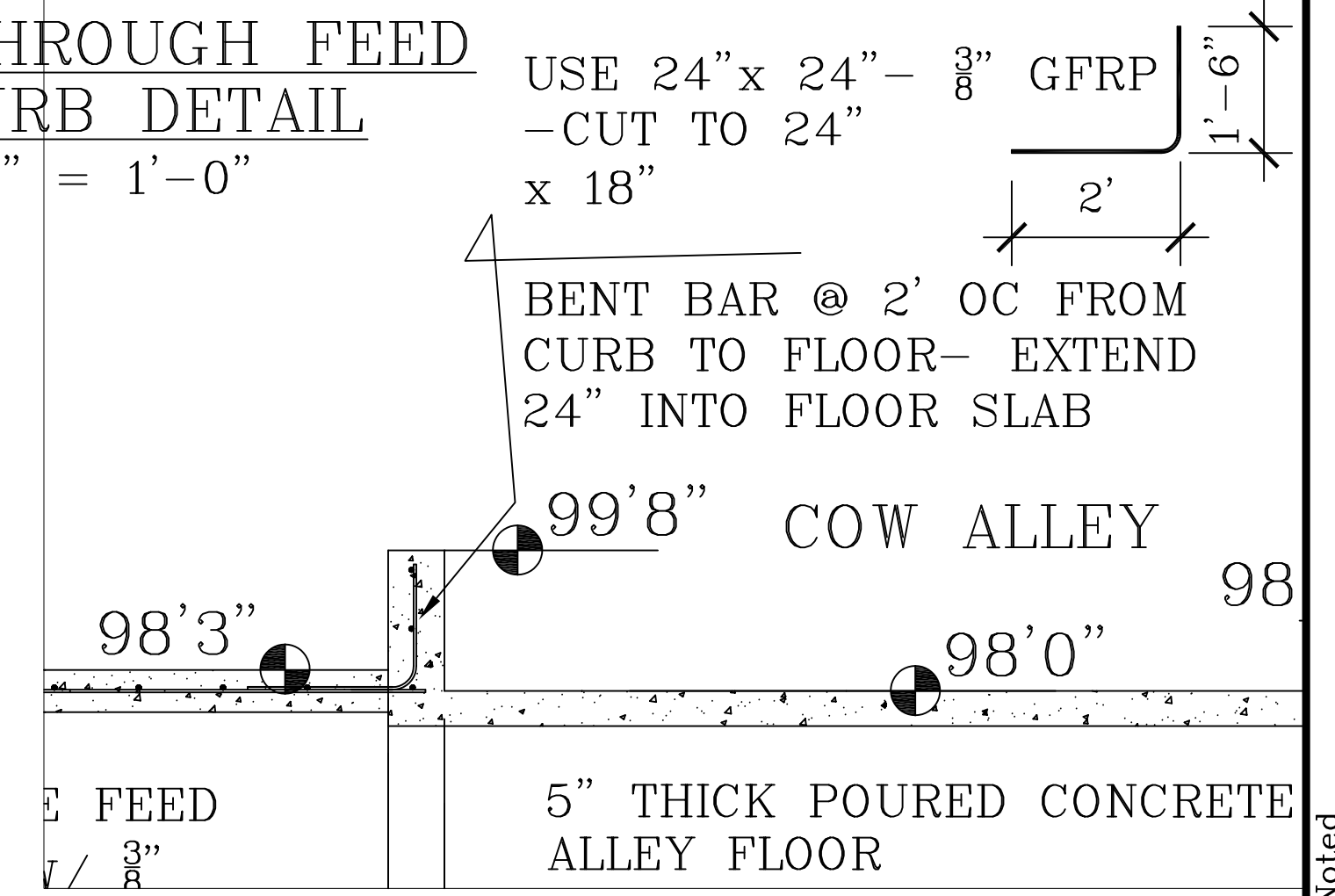


SAWCUT DEPTH IS $\frac{1}{3}$ OF SLAB DEPTH
AND MAX. $\frac{1}{4}$ " WIDE. HOLD REINFORCING
IN BOTTOM $\frac{1}{3}$ OF SLAB



**DRIVE THROUGH FEED
LANE CURB DETAIL**

SCALE: $\frac{1}{2}$ " = 1'-0"



REINFORCING REQUIREMENTS

GFRP REINFORCING SHALL HAVE A GUARANTEED MINIMUM TENSILE STRENGTH OF 119 KSI, SO LITEBAR (126KSI) AND GATOR BAR (145KSI) BOTH EXCEED THE REQUIREMENT. SOME LARGER SIZE BARS HAVE LOWER TENSILE STRENGTH BUT MINIMUM 119 KSI COVERS THOSE AS WELL.

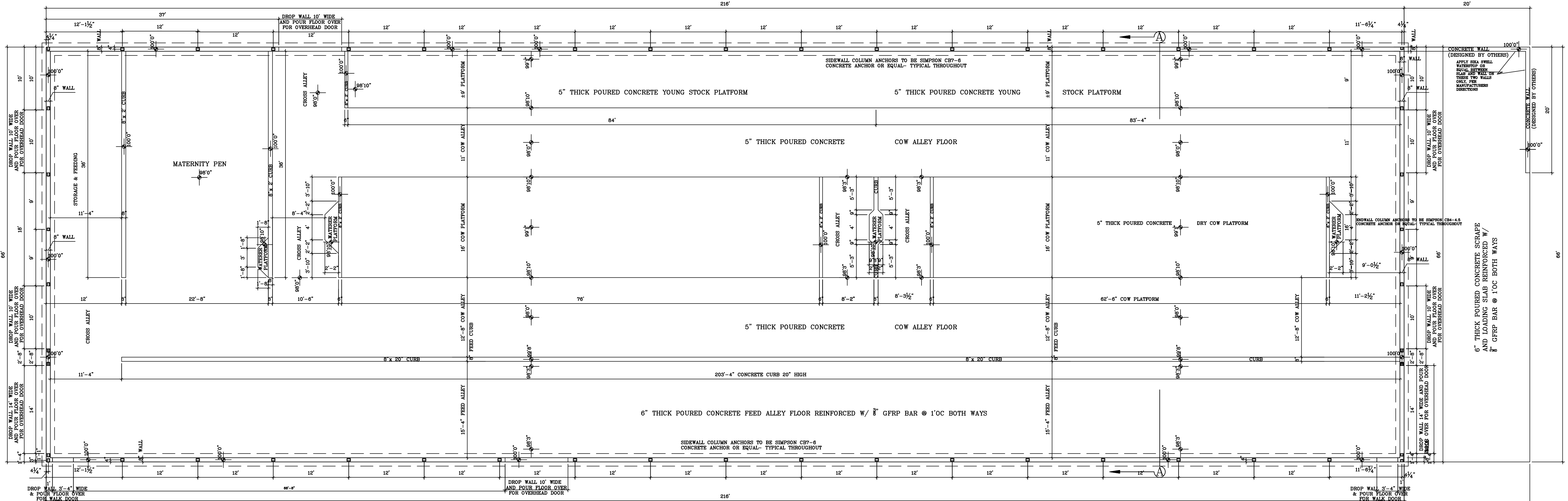
GFRP REINFORCING SHALL BE SECURED FROM FLOATING IN THE FLOORS BY USING A HALF CONCRETE BRICK OR 2" REBAR CHAIR SUPPORTS, AND USING LOW SLUMP CONCRETE.

LAP SPLICE LENGTH FOR $\frac{3}{8}$ " GFRP BARS SHALL BE 26 INCHES.

CONCRETE REQUIREMENTS:

ALL READY MIX CONCRETE USED ON THIS PROJECT SHALL HAVE 3,500 PSI COMPRESSIVE STRENGTH MINIMUM @ 28 DAYS. PROVIDE FOR ADEQUATE EXPANSION JOINTS BY SAWCUTTING AND FILLING SLABS SO MAXIMUM AREA SHALL NOT EXCEED TWO HUNDRED FIFTY SIX (256) SQUARE FEET OR 16' IN EITHER DIRECTION. ALL CONCRETE REINFORCING SHALL BE GFRP BARS

8" x 4'-0" POURED CONCRETE PERIMETER WALL 2' IN & 2' OUT W/ $\frac{3}{8}$ " GFRP BAR REINFORCING @ 8" OC VERTICAL AND 12" OC HORIZONTAL ON A 24" x 12" POURED CONCRETE FOOTING W/ 3 EA $\frac{3}{8}$ " GFRP BAR CONTINUOUS- TYPICAL THROUGHOUT- CONCRETE CONTRACTOR TO VARY THE WALL HEIGHT AS NEEDED TO MAINTAIN ADEQUATE COVER



SCALE	Noted
DATE:	2jan19
NAME:	BL
DWG. NO.:	19-339
CADFILE:	
REVISIONS:	23JAN19 28JAN19 27FEB19 28mar19 18apr19 9MAY19 21aug19 23mar20 26jun20 2jul20 9jul20 16jul20 28aug20 16dec20 12JAN21 13JAN21

PROPOSED BARN FOR

BESTIMATE LLC
http://bestimatellc.com
714 E Ninth St
Marshfield, WI 54449
bob@bestimatellc.com
715-506-0040

