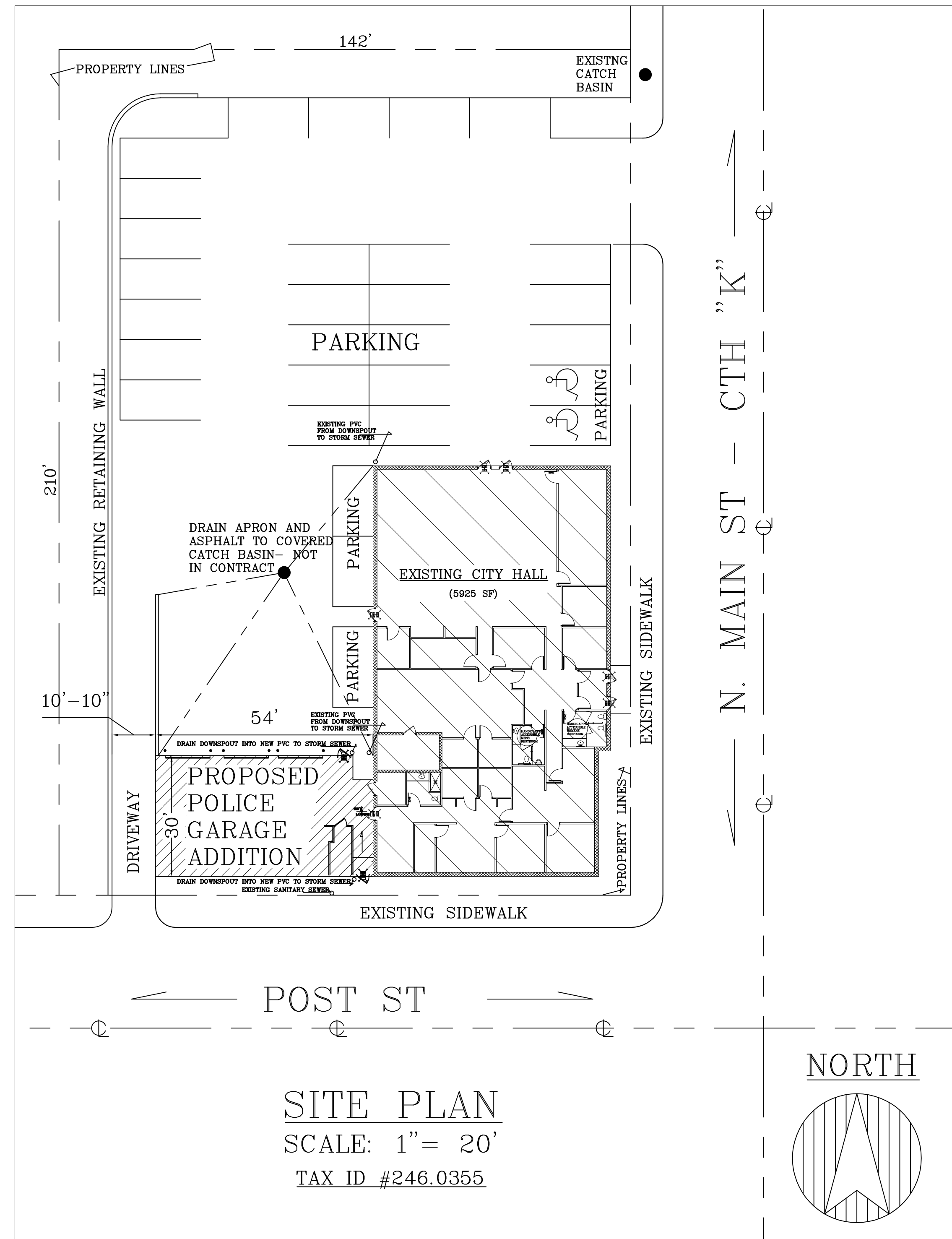


# PROPOSED POLICE GARAGE ADDITION FOR

## CITY OF LOYAL 301 N. MAIN ST LOYAL WI 54446

SCALE: Noted  
 DATE: 22JAN18  
 NAME: BL  
 DWG. NO: 18-303  
 CAD FILE: CityLoyal PoliceGarage AdditionPrelim 22Jan18  
 REVISIONS: 9FEB18 13FEB18



**SITE PLAN**  
 SCALE: 1" = 20'  
 TAX ID #246.0355

### CONSTRUCTION NOTES

OCCUPANCY: ASSEMBLY GROUP A-3- CONDITIONED SPACE  
 TYPE VB COMBUSTIBLE UNPROTECTED CLASS OF CONSTRUCTION  
 PROPOSED 1,590 SF LADDERFRAME ADDITION TO THE EXISTING 5,925 SF STUDFRAME CITY HALL = 7,515 TOTAL SF ONE STORY HEATED UNSPRINKLERED WOOD STUD FRAME BUILDING.  
 BASED ON THE OCCUPANCY SPECIFIED ABOVE, AND THE CALCULATION PER IBC 506.2 EQUATION 5-2 BELOW, THIS CITY HALL WITH GARAGE IS ALLOWED 10,260SF WITH NO FIRE SPRINKLERS AND FIREWALLS REQUIRED:  
 PER IBC TABLE 503, The BASIC allowable area of a Type VB construction Group A-3 occupancy is 6,000 square feet.  
 Per Equation 5-2:  $I_r = [F / P - .25] W / 30$   
 $F = 322'$  total perimeter of building with at least 30' wide public way or open space all around  
 $P = 424'$  total perimeter of building  
 $W = 30'$  or more public way or open space  
 $I_r = [322 / 424] = (.759 - .25) = (.509 \times (30[+]/30)) = .509$  Area INCREASE due to frontage x 6000sf Basic allowable area = 3,054sf (Increase) + 6,000sf (Basic) = 9,054sf Allowable Area.

### DESIGN LOADS

SNOW LOAD	GROUND SNOW LOAD ( $P_g$ ) =	50 PSF
	SNOW EXPOSURE FACTOR ( $C_e$ ) =	1.0
	SNOW LOAD IMPORTANCE FACTOR ( $I_s$ ) =	1.0
	ROOF THERMAL FACTOR ( $C_t$ ) =	1.1
	FLAT ROOF SNOW LOAD =	38.5 PSF
	SLOPED ROOF / FLAT ROOF FACTOR ( $P_s$ ) =	1
	BALANCED SNOW LOAD =	38.5 PSF
	UNBALANCED SNOW LOAD =	$11.55 = .3 * P_s$
ROOF TRUSS DESIGN	TOP CHORD LIVE LOAD =	38.5 PSF
	TOP CHORD DEAD LOAD =	10 PSF
	BOTTOM CHORD DEAD LOAD =	10 PSF
WIND LOAD	90 MPH WIND, WIND EXPOSURE =	C
	WIND IMPORTANCE FACTOR (I) =	1.0
	BUILDING ENCLOSURE TYPE =	ENCLOSED
	INTERNAL PRESSURE COEFFICIENT =	$\pm .018$
	COMPONENT & CLADDING DESIGN PRESSURE =	+19.2, -20.8 PSF
SEISMIC LOAD	SEISMIC IMPORTANCE FACTOR ( $I_e$ ) =	1
	SITE CLASS =	D
	SEISMIC DESIGN CATEGORY =	A
	SPECTRAL RESPONSE COEFFICIENTS: $S_{ds}$ =	8.2%
	$S_{d1}$ =	5.8%
CONCRETE REQUIREMENTS	SLAB ON GRADE COMPRESSIVE STRENGTH MINIMUM PSI @ 28 DAYS =	3500 PSI
	FOOTING FOUNDATIONS COMPRESSIVE STRENGTH MINIMUM PSI @ 28 DAYS =	3000 PSI
	WALL COMPRESSIVE STRENGTH MINIMUM PSI @ 28 DAYS =	4000 PSI
	CONCRETE REINFORCING STEEL - $F_y$ (ASTM A615, GRADE 60 =	60000 PSI
STRUCTURAL STEEL	COMPRESSIVE STRENGTH OF CONCRETE MASONRY $F_m$ =	1500 PSI
SOILS INFORMATION	CLASS OF MATERIALS =	4 FIRM
	ALLOWABLE SOIL BEARING PRESSURE =	3000 PSF

### SHEET INDEX

PAGE	CONTENTS
	DESIGN LOADS, CONSTRUCTION NOTES & SITE PLAN
2 OF 5	FOUNDATION PLAN
3 OF 5	FLOOR PLAN, LINTEL SCHEDULE, ELECTRICAL PLAN & SCHEDULE
4 OF 5	ELEVATIONS
5 OF 5	CROSS SECTIONS

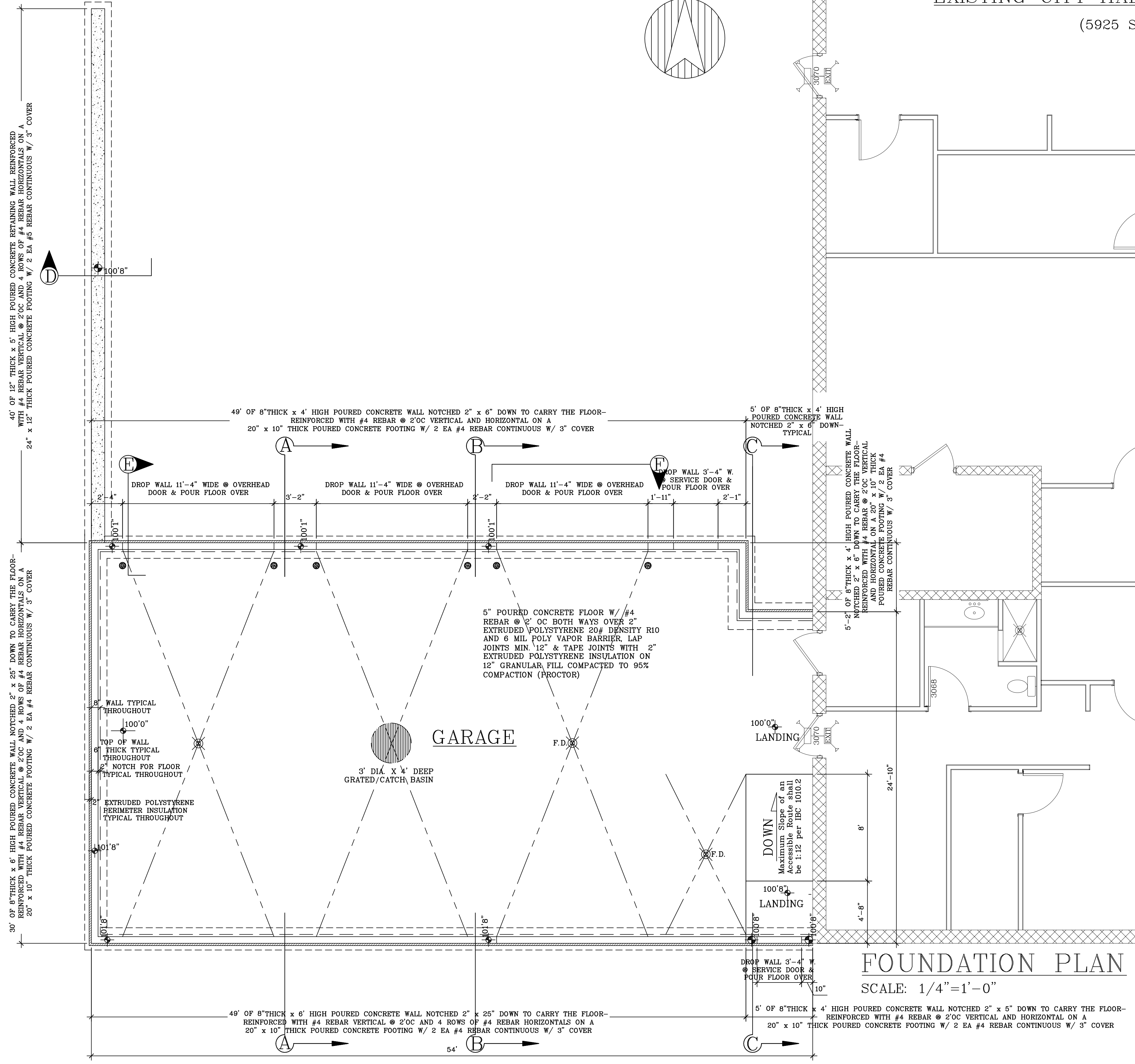
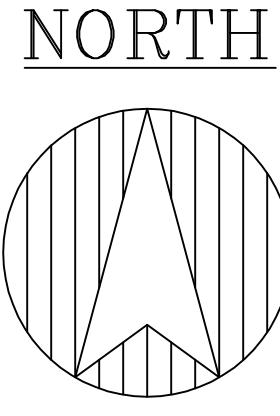
PROPOSED POLICE GARAGE ADDITION FOR  
 CITY OF LOYAL  
 301 N. MAIN ST LOYAL WI 54446

**BESTIMATE LLC**  
<http://bestimatellc.com>  
 bob@bestimatellc.com  
 714 E Ninth St  
 Marshfield, WI 54449



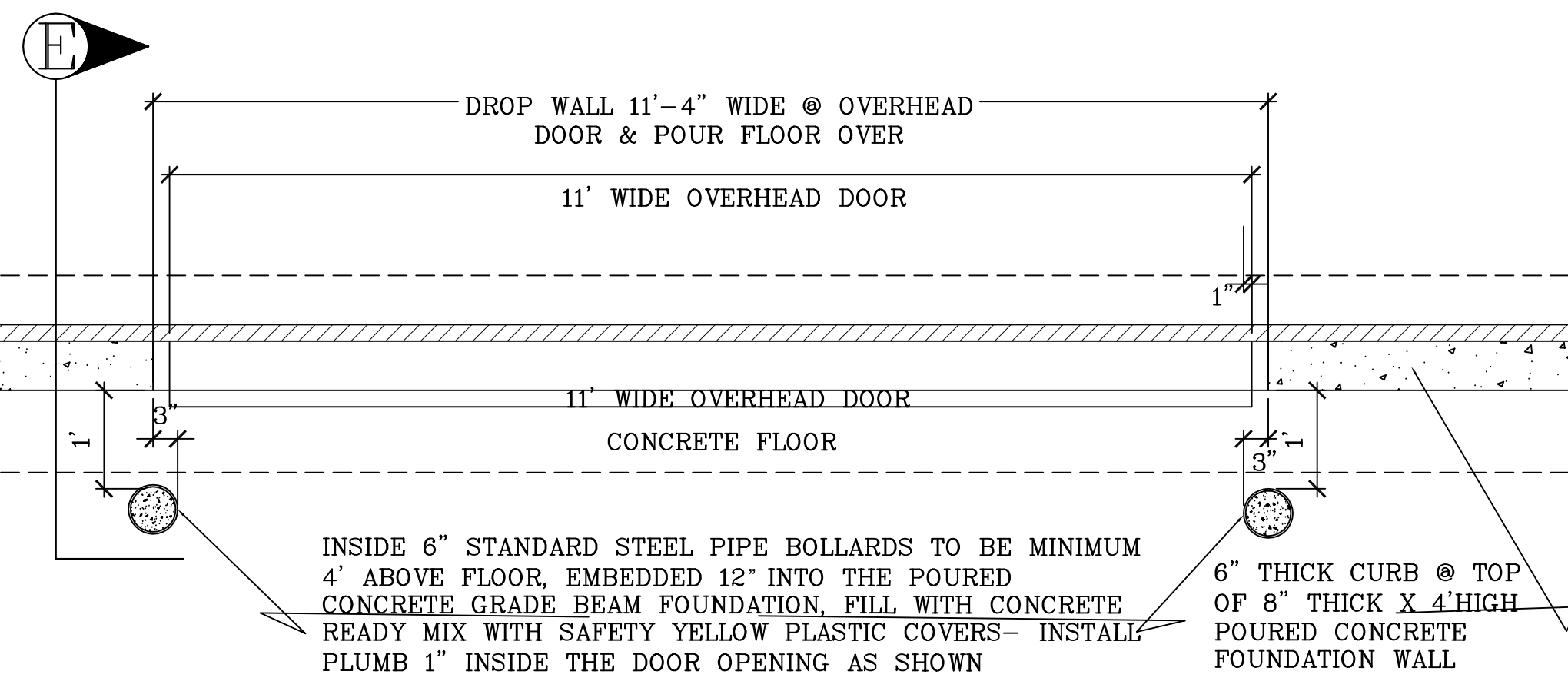
PAGE NO:  
 Title



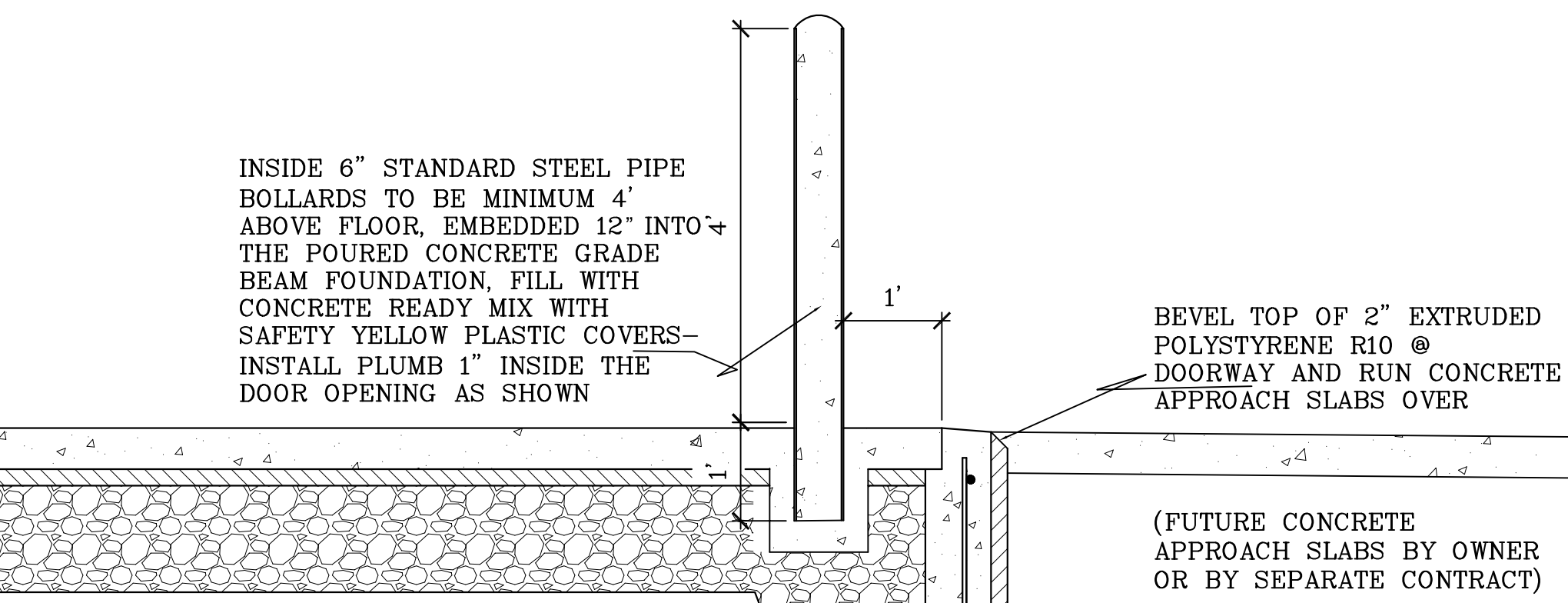


**FOUNDATION PLAN**  
SCALE: 1/4" = 1'-0"

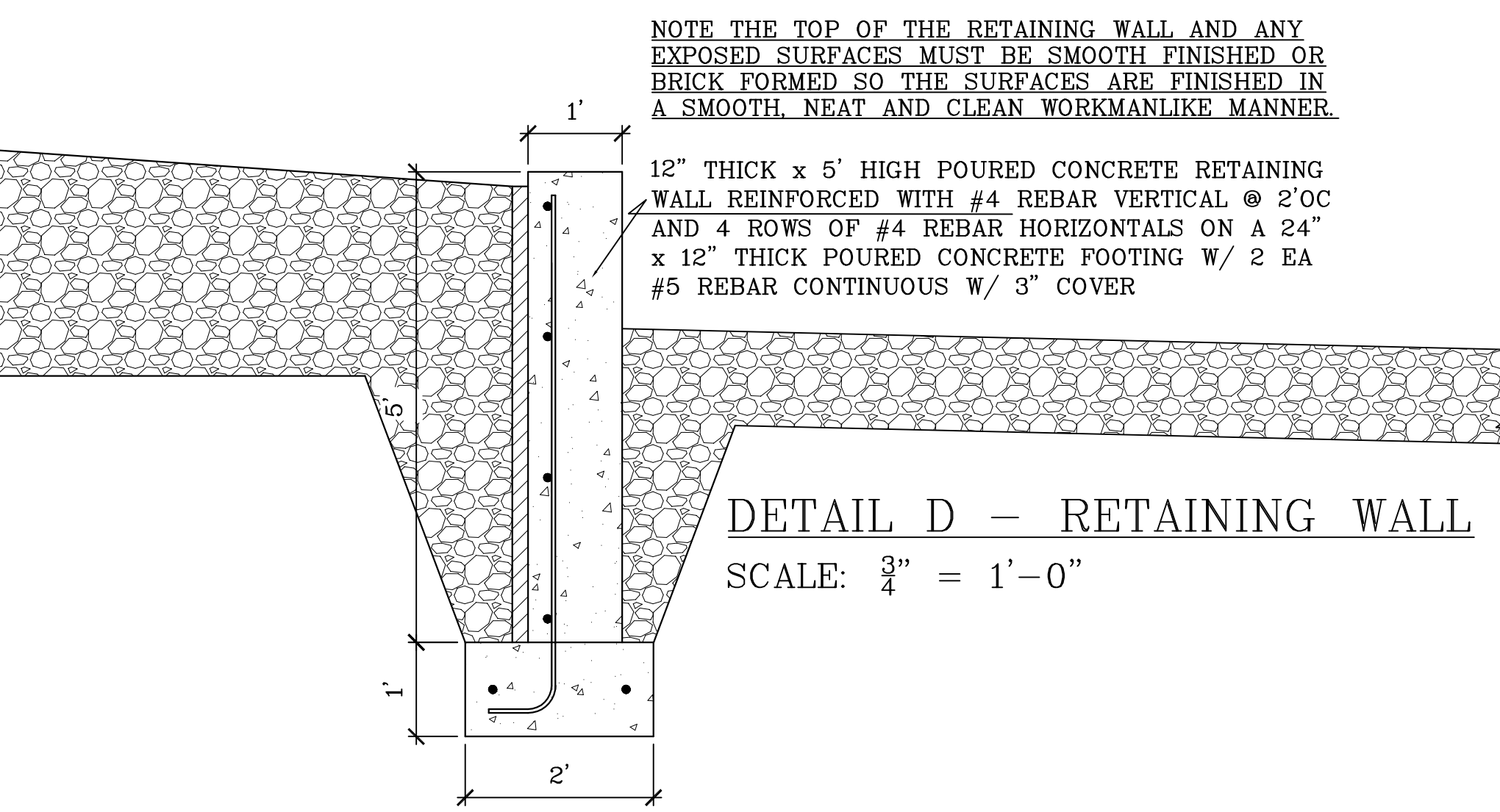
EXISTING CITY HALL  
(5925 ST)



**DETAIL F - PIPE BOLLARDS**  
SIX EACH (6) EACH INTERIOR - TYPICAL THROUGHOUT  
SCALE: 3/4" = 1'-0"



**DETAIL E - PIPE BOLLARDS (SIX (6) EACH) & PERIMETER INSULATION @ APPROACH DOORS - TYPICAL THROUGHOUT**  
SCALE: 3/4" = 1'-0"



**DETAIL D - RETAINING WALL**  
SCALE: 3/4" = 1'-0"

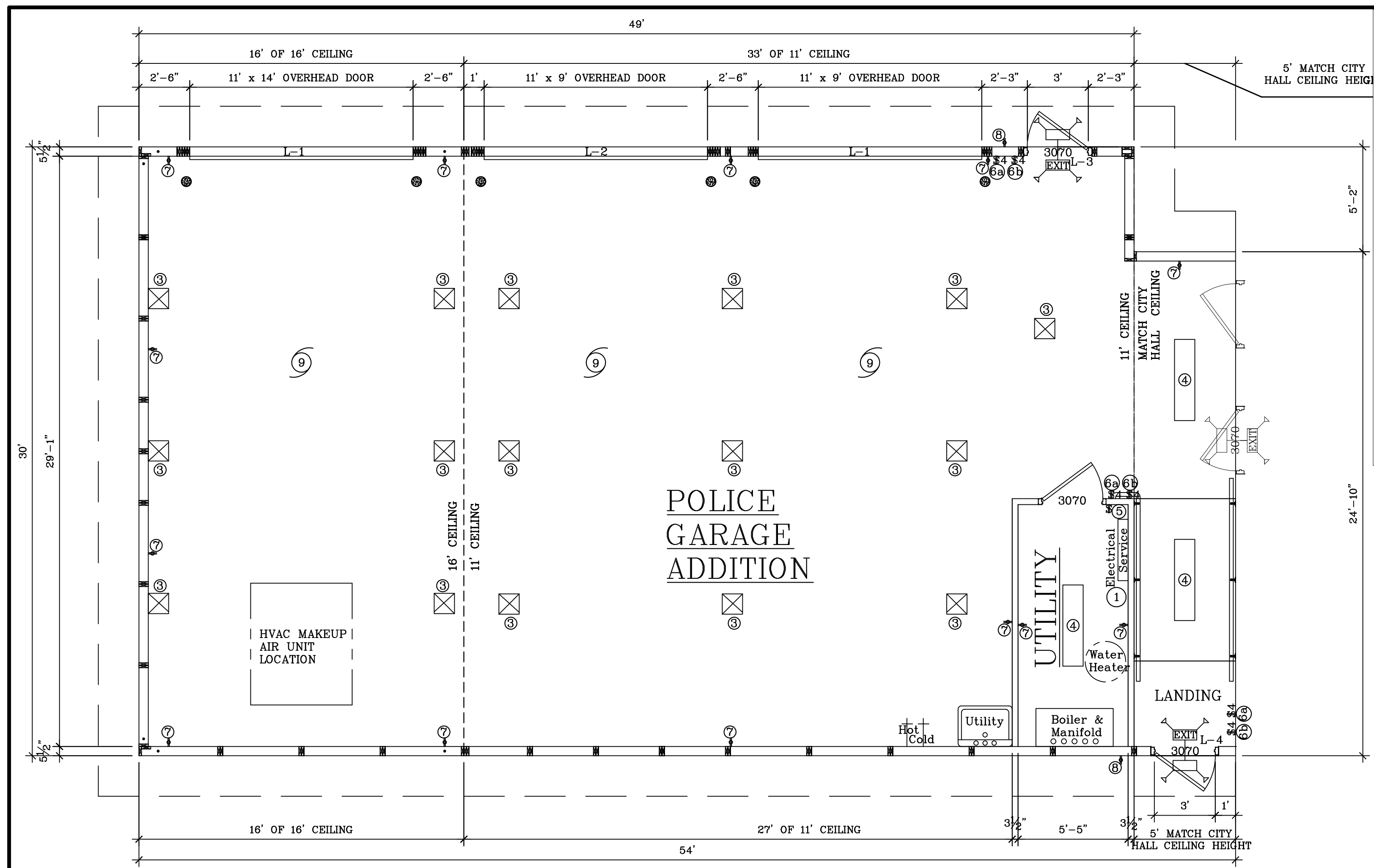
SCALE: Noted	DATE: 22JAN18	NAME: BL
DWG. NO: 18-303	CADFILE: CityLoyal PoliceGarage AdditionPrelim 22Jan18	
REV: 01	REV: 01	
REV: 02	REV: 02	
REV: 03	REV: 03	
REV: 04	REV: 04	
REV: 05	REV: 05	
REV: 06	REV: 06	
REV: 07	REV: 07	
REV: 08	REV: 08	
REV: 09	REV: 09	
REV: 10	REV: 10	
REV: 11	REV: 11	
REV: 12	REV: 12	
REV: 13	REV: 13	
REV: 14	REV: 14	
REV: 15	REV: 15	
REV: 16	REV: 16	
REV: 17	REV: 17	
REV: 18	REV: 18	
REV: 19	REV: 19	
REV: 20	REV: 20	

PROPOSED POLICE GARAGE ADDITION FOR  
CITY OF LOYAL  
301 N. MAIN ST. LOYAL WI 54446

**BESTIMATE LLC**  
http://bestimatellc.com  
bob@bestimatellc.com  
715-506-0040







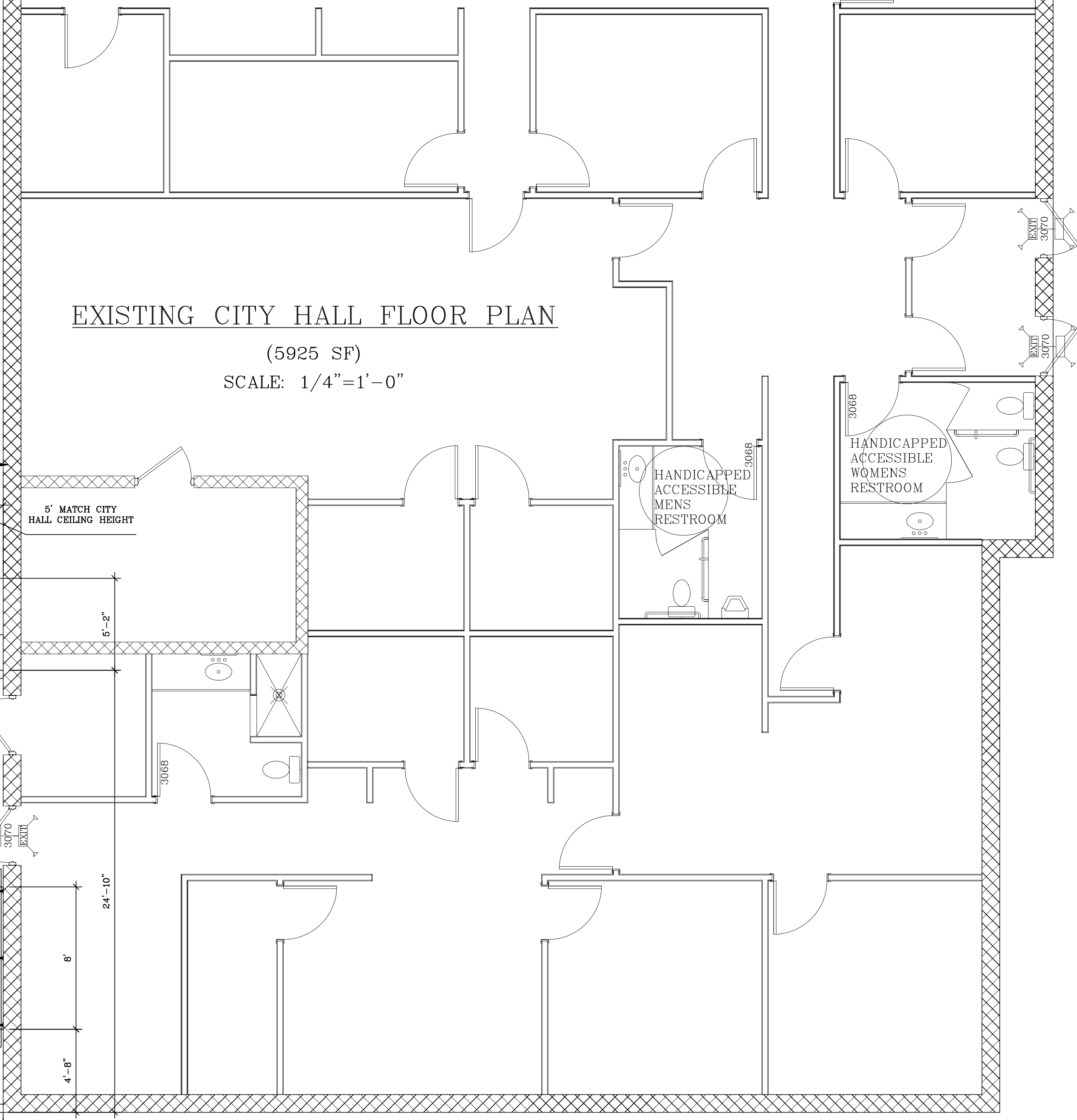
**ELECTRICAL PLAN**  
SCALE: 1/4" = 1'-0"

**ELECTRICAL NOTES**  
ELECTRICAL CONTRACTOR IS RESPONSIBLE TO FURNISH ALL MATERIALS AND LABOR AS REQUIRED TO COMPLETE THE PROJECT IN ACCORDANCE WITH THE PLANS AND SCHEDULES, INCLUDING PLUMBING EQUIPMENT AND HVAC EQUIPMENT ELECTRICAL HOOKUP. ELECTRICAL CONTRACTOR MUST FURNISH ON SITE LIGHTING AND EGRESS PLANS PER WISCONSIN CODE. SEE ELECTRICAL SPECIFICATIONS.

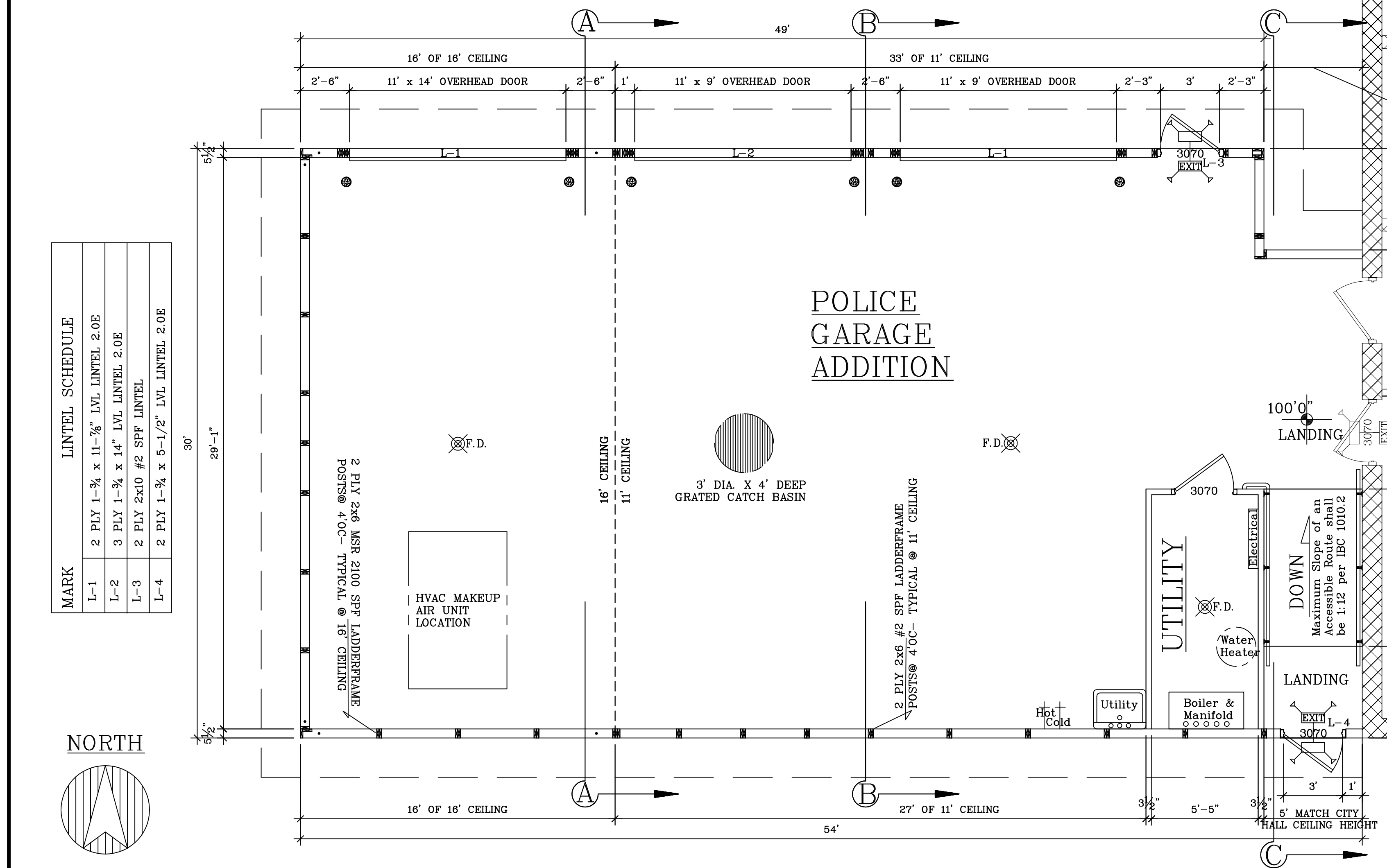
**ELECTRICAL SCHEDULE**

#	QTY	EQUIPMENT	EQUIPMENT
1	1	100 AMP SINGLE PHASE BREAKER PANEL	SQUARE D #Q0124M100
2	2	40 WATT LED WALL PACS 3900 LUMENS-	econoLIGHT E-WF1L04CZ - 5000K- SEE NOTE A BELOW
3	16	36 WATT 3600 LUMEN LED CANOPY LIGHT	econoLIGHT E-CC5 - 5000K
4	3	SURFACE MOUNT 4' LED FIXTURE 47 WATT - 5000K	EATON #4WNLED-LD4-50SL-F-UNV-L850-CD1-U
5	1	SINGLE POLE SWITCH	GENERIC
6a	3	4 WAY SWITCH CIRCUIT #1- HIGH BAY LIGHTS	GENERIC
6b	3	4 WAY SWITCH CIRCUIT #1- LOW BAY LIGHTS	GENERIC
7	13	20 AMP GFI RECEPTACLE	RECEPTACLE TO BE +/-40" ABOVE FLOOR FOR WASH
8	2	20 AMP GFI RECEPTACLE W/ EXTERIOR LOCKABLE COVER	GENERIC
9	3	MOTOR HOOKUP FOR OHD OPERATORS	GENERIC

**NOTES:**  
BOTH EXTERIOR WALL PACS WILL BE WIRED WITH LIGHT SENSOR SO EXTERIOR LIGHTING WILL ALWAYS BE ON WHEN DARK, AND CONTROLLED BY ONE DEDICATED CIRCUIT BREAKERS



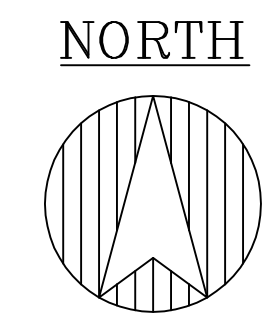
**FLOOR PLAN**  
SCALE: 1/4" = 1'-0"



**POLICE GARAGE ADDITION**

**LINETEL SCHEDULE**

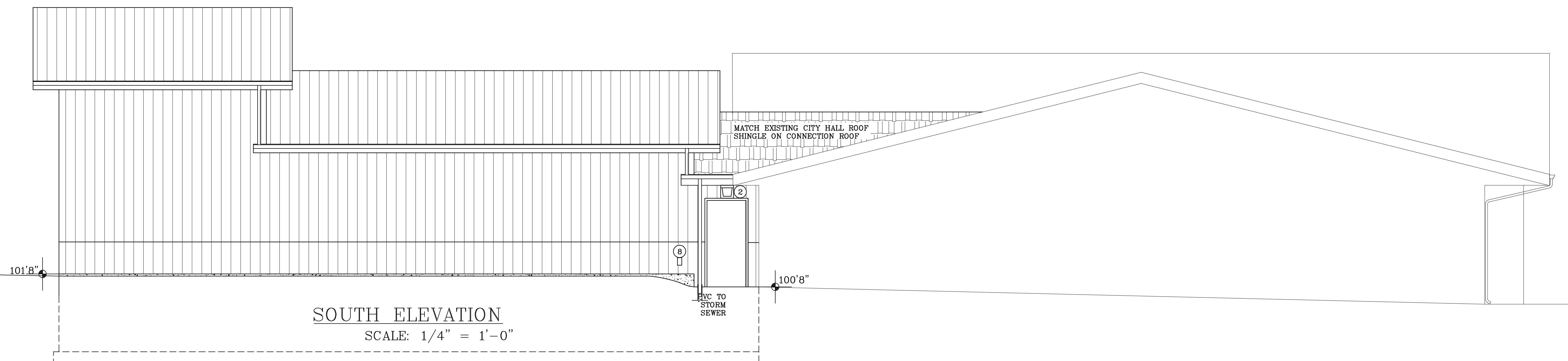
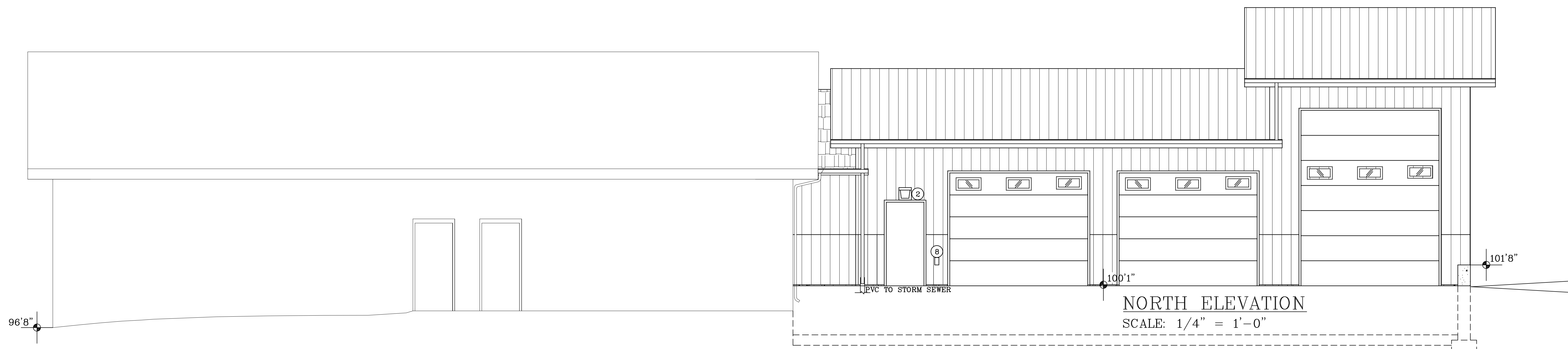
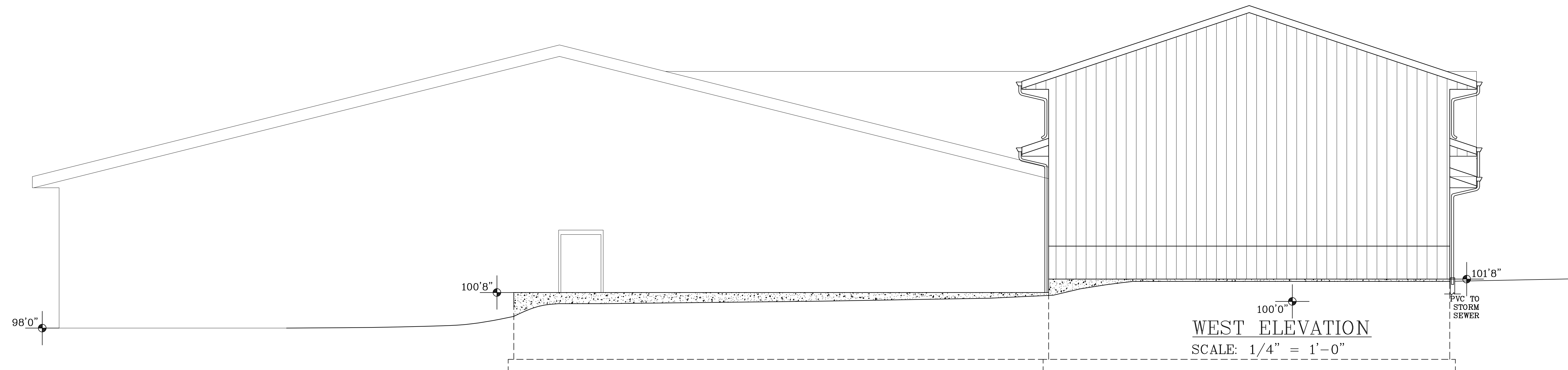
MARK	LINETEL SCHEDULE
L-1	2 PLY 1-3/4" x 11-7/8" LVL LINETEL 2.0E
L-2	3 PLY 1-3/4" x 14" LVL LINETEL 2.0E
L-3	2 PLY 2x10 #2 SFF LINETEL
L-4	2 PLY 1-3/4" x 5-1/2" LVL LINETEL 2.0E



SCALE: Noted  
DATE: 22JAN18  
NAME: BL  
DWG. NO: 18-303  
CITY OF LOYAL  
301 N. MAIN ST LOYAL WI 54446

PROPOSED POLICE GARAGE ADDITION FOR  
CITY OF LOYAL

**BESTIMATE LLC**  
http://bestimatellc.com  
714 E Ninth St  
Marshfield, WI 54449  
bob@bestimatellc.com  
715-506-0040



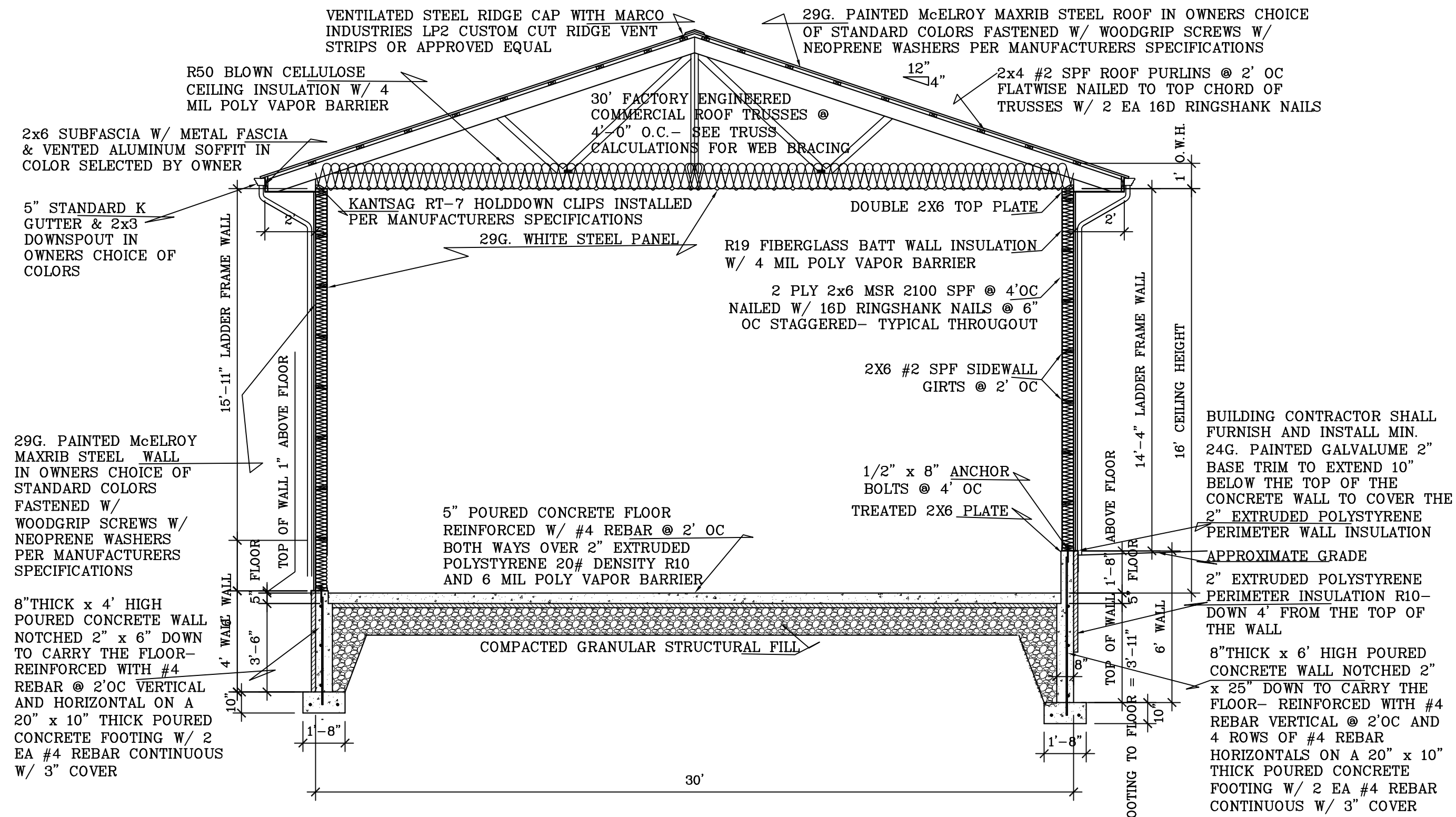
SCALE:	Noted
DATE:	22JAN18
NAME:	BL
DWG. NO.:	18-303
PROJECT:	CADFI Loyal Police Garage Addition Prelim 22Jan18
REVISED:	9Feb18 13FEB18

PROPOSED POLICE GARAGE ADDITION FOR  
CITY OF LOYAL  
301 N. MAIN ST LOYAL WI 54446

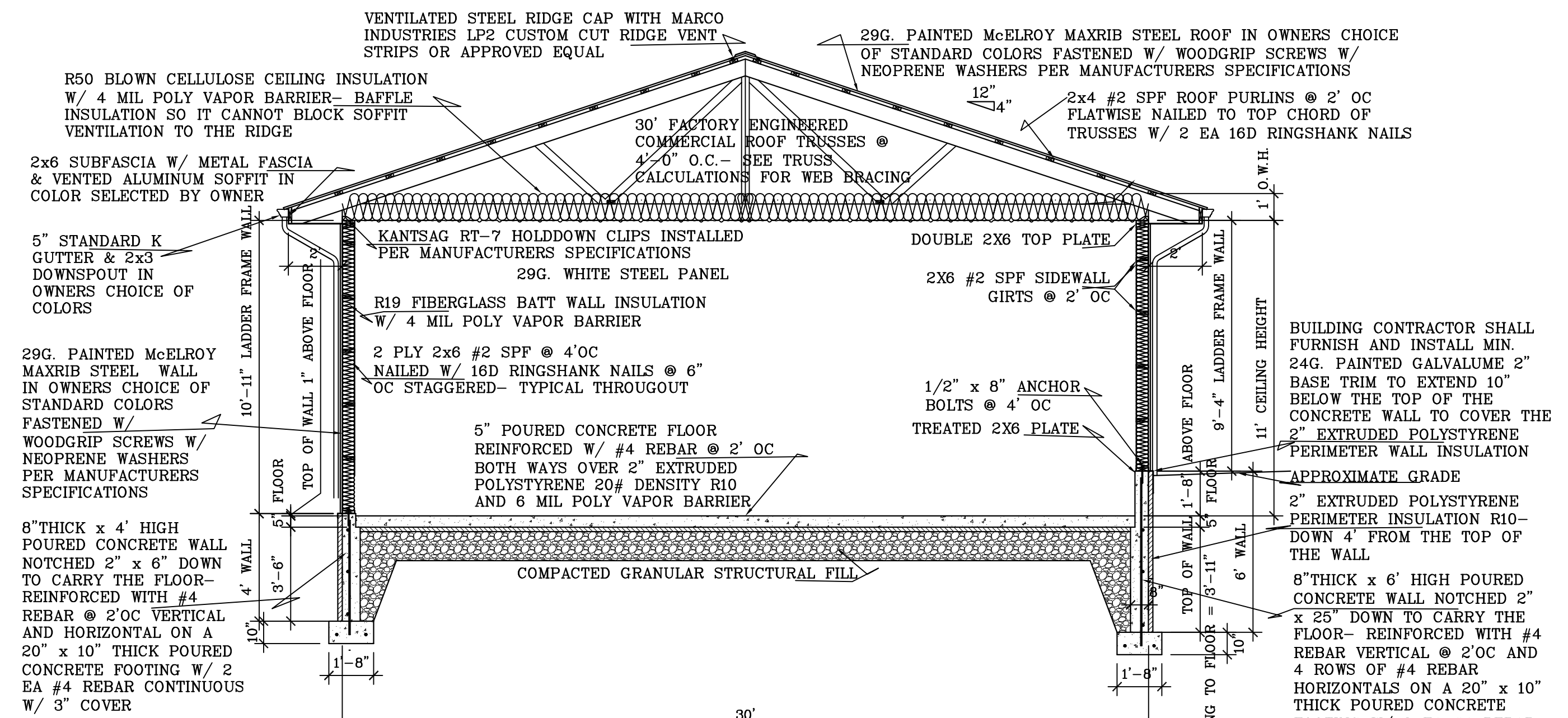
**BESTIMATE LLC**  
http://bestimatellc.com  
bob@bestimatellc.com  
715-506-0040  
714 E Ninth St  
Marshfield, WI 54449



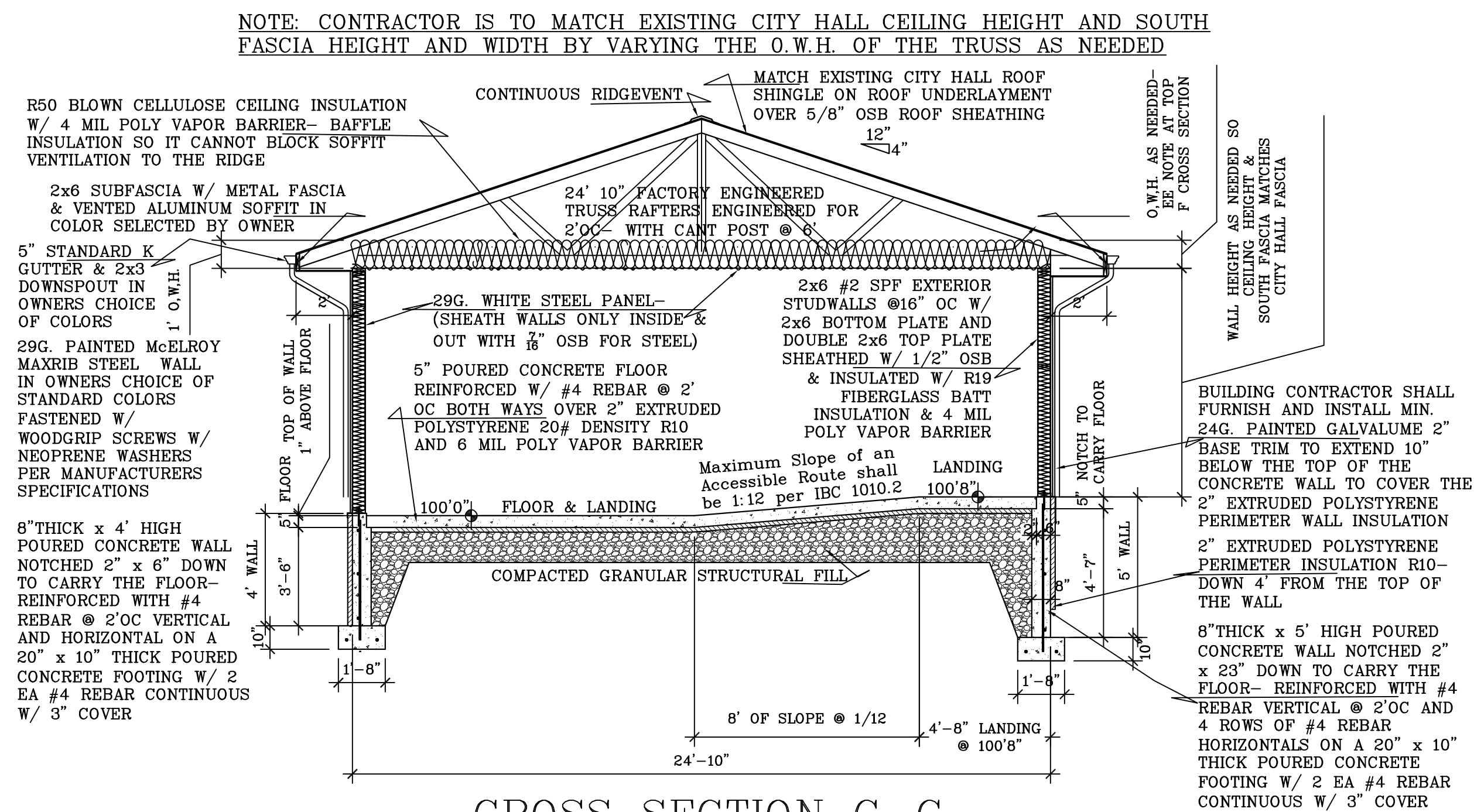
• NOTE: The blown-in insulation installer shall provide identification markers that are labeled in inches or millimeters installed at least one for every 300 square feet throughout the attic space. The markers shall be affixed to the trusses or joists and marked with the minimum initial installed thickness and the minimum settled thickness with the numbers a minimum of 1" in height. Each marker shall face the attic access opening. The thickness of the installed insulation shall meet or exceed the minimum installed thickness shown on the marker.



CROSS SECTION A-A  
SCALE: 1/4" = 1'-0"



CROSS SECTION B-B  
SCALE: 1/4" = 1'-0"



CROSS SECTION C-C  
SCALE: 1/4" = 1'-0"

PROPOSED POLICE GARAGE ADDITION FOR

CITY OF LOYAL

301 N. MAIN ST LOYAL WI 54446

**BESTIMATE LLC**

http://bestimatellc.com  
bob@bestimatellc.com  
714 E Ninth St  
Marshfield, WI 54449



PAGE NO:

5 of 5

SCALE: Noted

DATE: 22JAN18

NAME: BL

DWG. NO: 18-303

CAD: IL CityLoyal PoliceGarage  
AdditionPrelim 22Jan18

REVISIONS:  
13FEB18