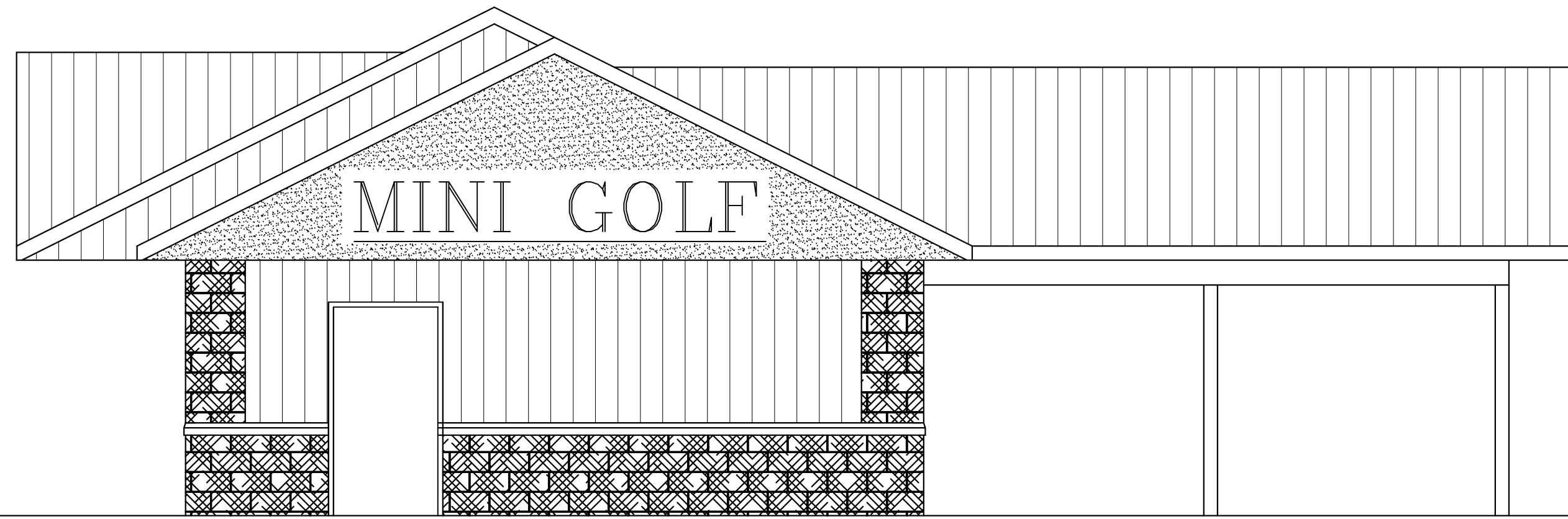
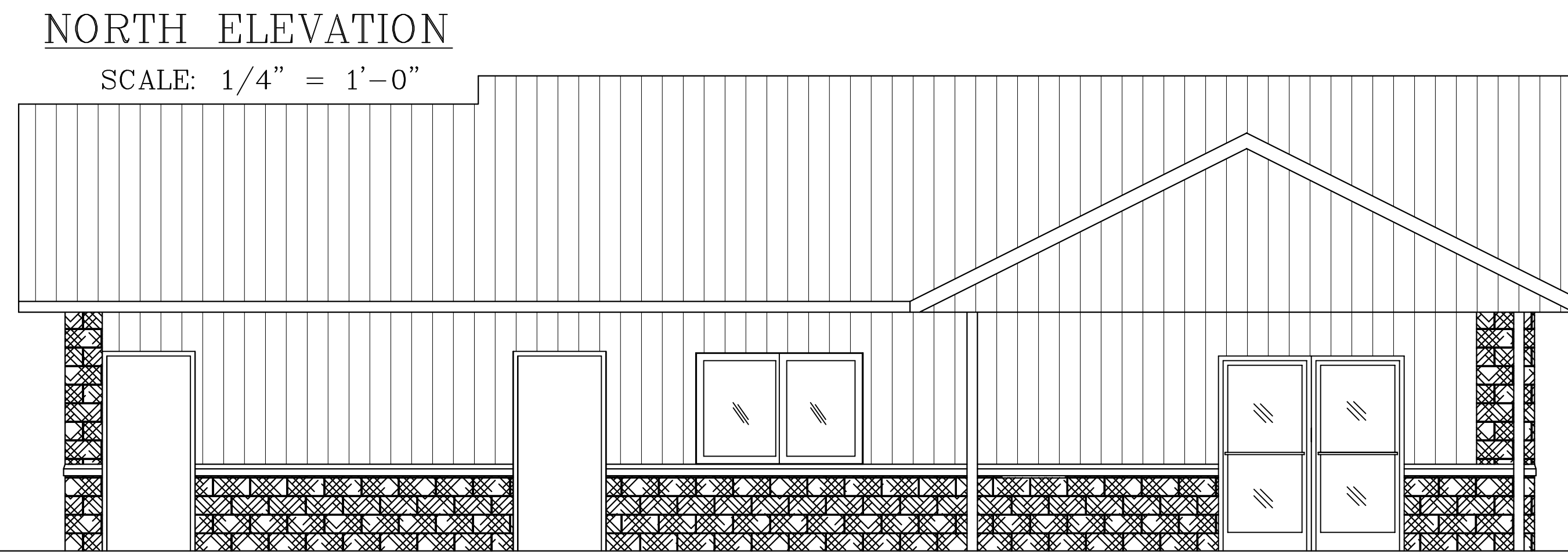


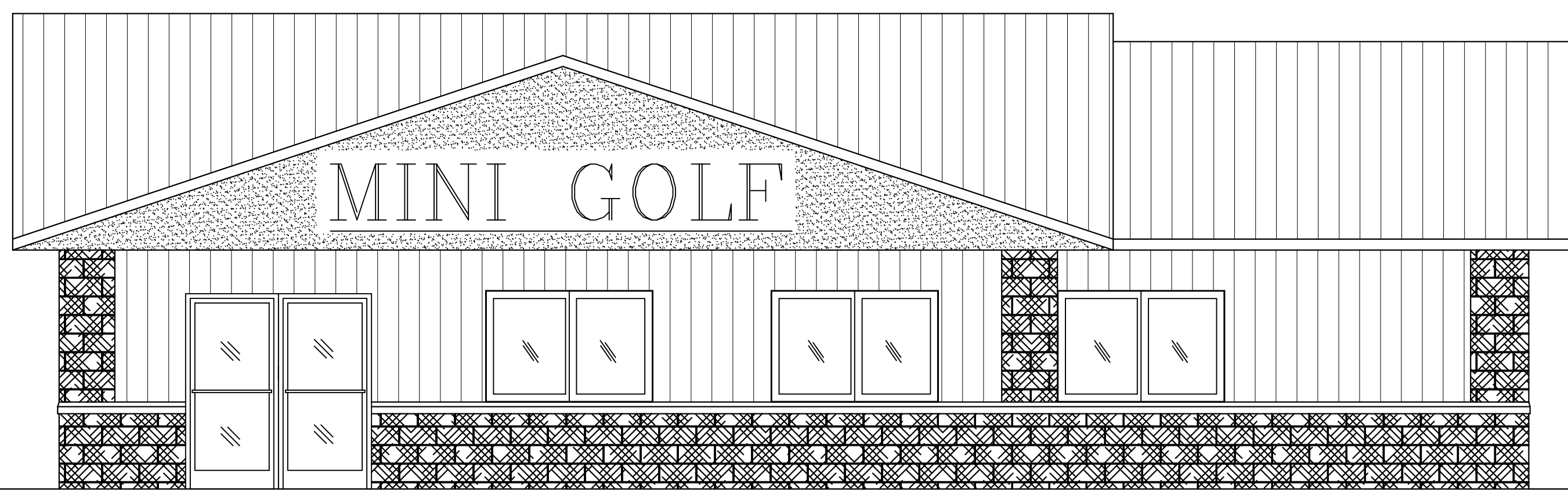
WEST ELEVATION  
SCALE: 1/4" = 1'-0"



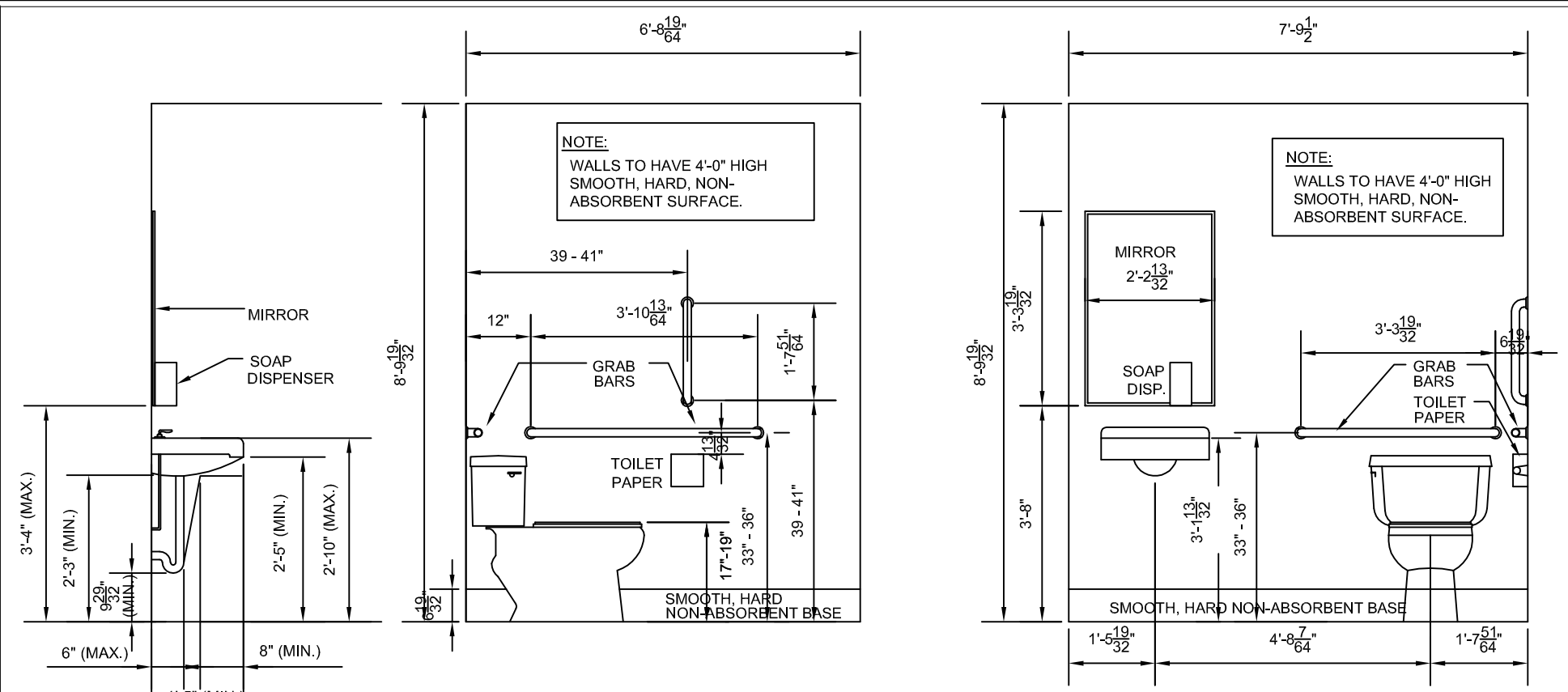
EAST ELEVATION  
SCALE: 1/4" = 1'-0"



NORTH ELEVATION  
SCALE: 1/4" = 1'-0"



SOUTH ELEVATION  
SCALE: 1/4" = 1'-0"



THE STANDARDS DESIGNATE CLEAR FLOOR SPACE to accommodate a single wheelchair of at least 30 inches by 48 inches (760 by 1220mm). The space can be positioned for a forward or parallel approach to restroom elements. A portion of the clear floor space may be located under fixtures, lavatories, or accessories as long as the required knee and toe clearance is provided (Fig. 14 and many others). If properly centered in front of controls and operating mechanisms, the clear floor space will allow both left- and right-hand access. REACH RANGES AND MOUNTING HEIGHTS for restroom accessories may vary within a facility depending on the location of individual accessories and the direction of reach required for their use. To allow use by people with limited reach range, it is required that accessories be mounted with their "operable parts" - dispensing mechanisms, start buttons, coin slots, or dispenser openings - located no more than 48 inches (1220mm) above the finish floor (Fig. 1a). Where accessories are mounted over obstructions such as counters, depending on the nature and depth of the obstruction it is required that they be located between 44 inches and 48 inches (1120 and 1220mm) maximum above the finish floor. The operable portions of any accessory should be mounted no lower than 15 inches (380mm) above the floor. However, the 2009 ICC/ANSI Standards limit the operable portions of dispensers in toilet compartments to no lower than 18 inches (455mm). When determining the mounting location of restroom accessories, make sure to account for side and forward approaches.

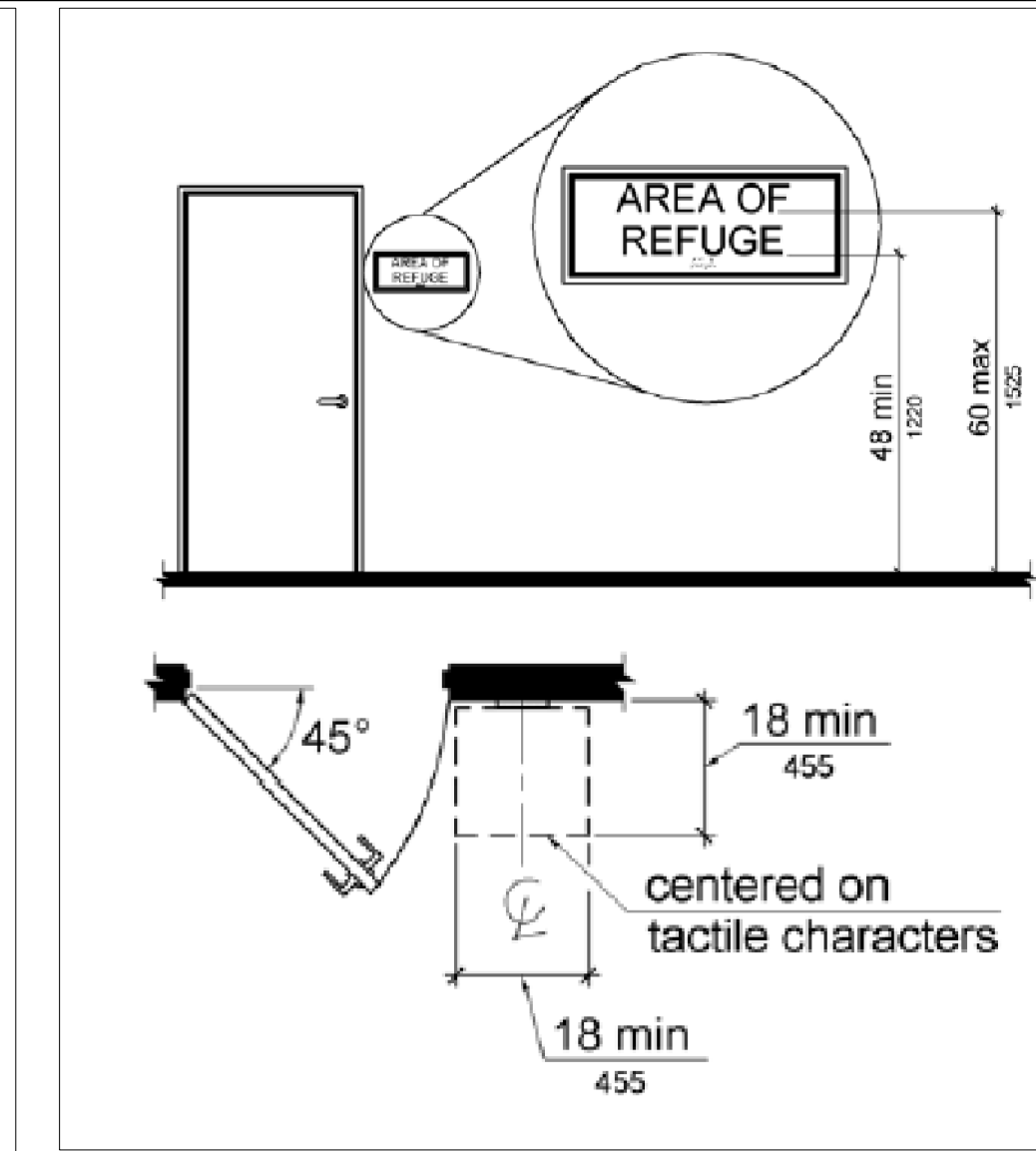


Figure 703.4.1  
Height of Tactile Characters Above Finish Floor or Ground

Figure 703.4.2  
Location of Tactile Signs at Doors

HEADER SCHEDULE

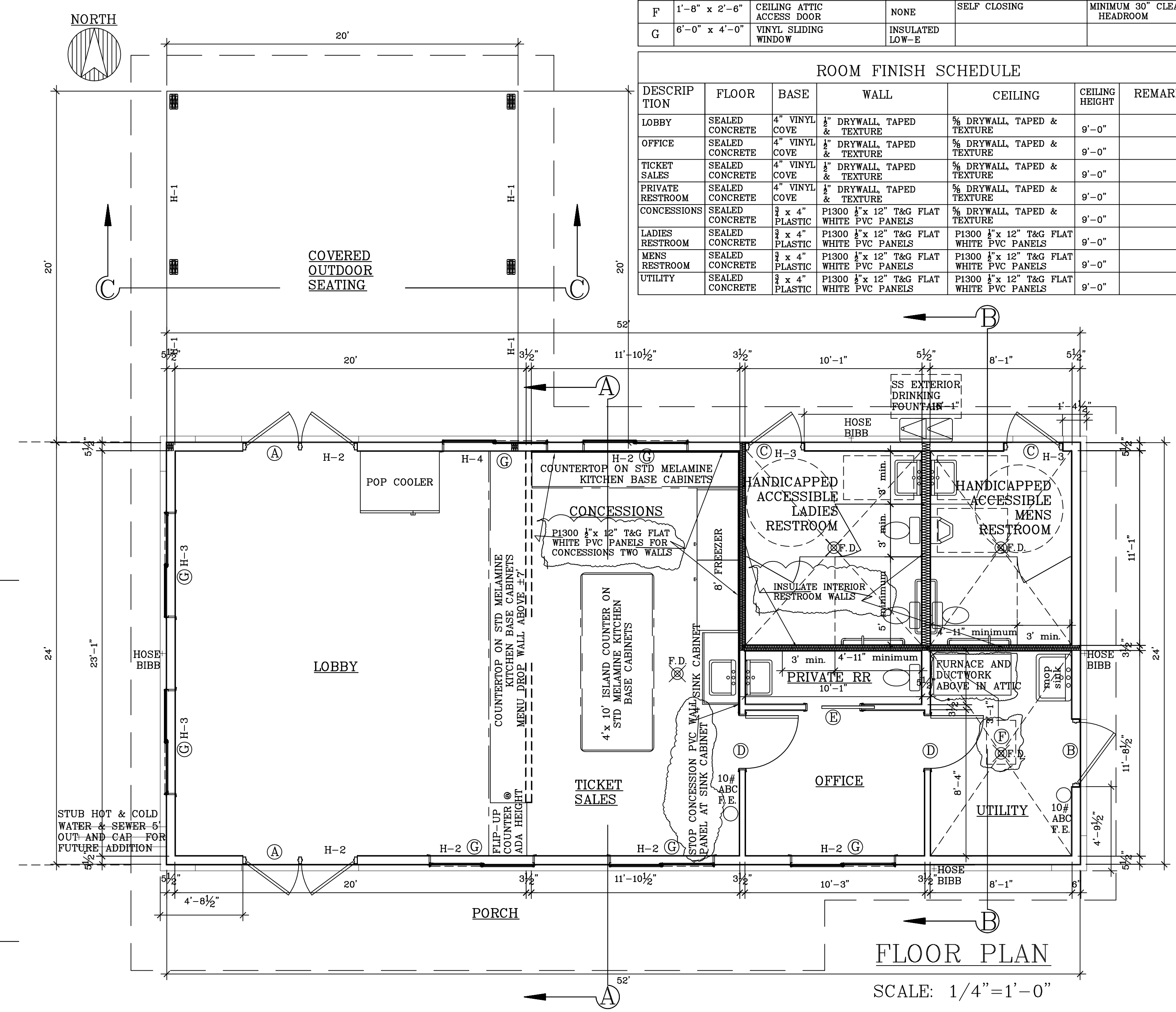
MARK	DESCRIPTION
H-1	2 PLY 1 1/2" x 9 1/2" #LVL 2.0E
H-2	3 PLY 2x10 #2 SPF
H-3	2 PLY 2x10 #2 SPF
H-4	2 PLY 1 1/2" x 9 1/2" #LVL 2.0E

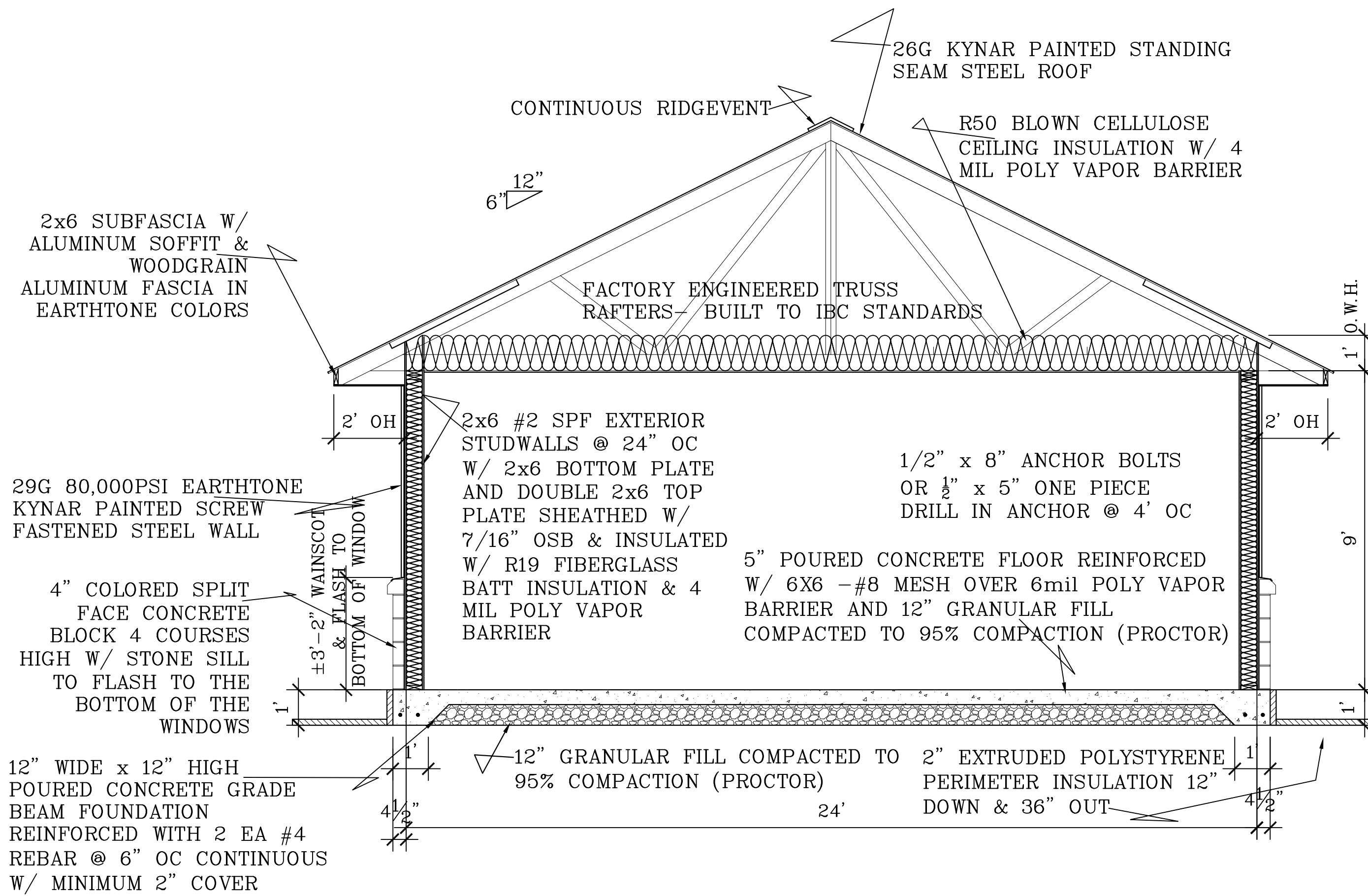
DOOR & WINDOW SCHEDULE

MARK	R.O.S.	DESCRIPTION	GLASS	HARDWARE	REMARKS
A	6'-4" x 7'-2"	3/0x7/0 ALUMINUM FRAME GLASS DOUBLE DOOR	INSULATED LOW-E	PUSH PULLS, THUMBTURN LOCK & CLOSERS	BRONZE ALUMINUM W/ REMOVABLE MULLIONS
B	3'-10-1/4" x 6'-10-1/2"	3/6x6/8 STEEL INSUL DOOR & FRAME	NONE	ADA ACCEPTABLE LEVER LOCKSET & CLOSER	
C	3'-4-1/4" x 6'-10-1/2"	3/0x6/8 STEEL INSUL DOOR & FRAME	NONE	PUSH PULLS, DEADLOCK & CLOSER	
D	3'-2" x 6'-9-1/2"	3C OAK FLUSH DOOR & FRAME	NONE	KEYED ADA ACCEPTABLE LEVER LOCKSET	
E	PER MANUFACTURER	HC OAK FLUSH POCKET DOOR & FRAME	NONE	KEYED LOCKSET	INSTALL PER POCKET DOOR FRAME INSTRUCTIONS
F	1'-8" x 2'-6"	CEILING ATTIC ACCESS DOOR	NONE	SELF CLOSING	MINIMUM 30" CLEAR HEADROOM
G	6'-0" x 4'-0"	VINYL SLIDING WINDOW	INSULATED LOW-E		

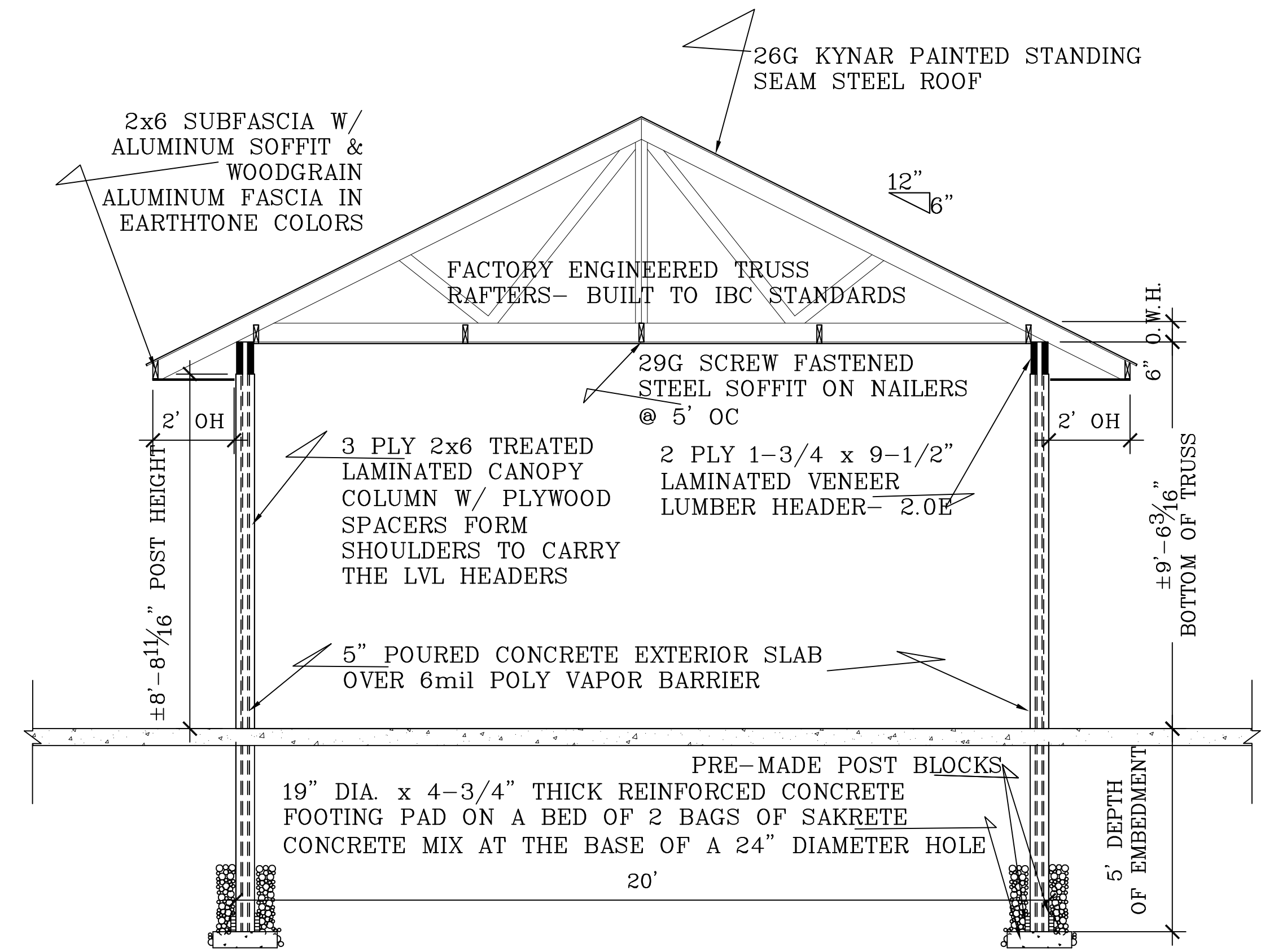
ROOM FINISH SCHEDULE

DESCRIP TION	FLOOR	BASE	WALL	CEILING	CEILING HEIGHT	REMARKS
LOBBY	SEALED CONCRETE	4" VINYL COVE	1/2" DRYWALL, TAPED & TEXTURE	5/8" DRYWALL, TAPED & TEXTURE	9'-0"	
OFFICE	SEALED CONCRETE	4" VINYL COVE	1/2" DRYWALL, TAPED & TEXTURE	5/8" DRYWALL, TAPED & TEXTURE	9'-0"	
TICKET SALES	SEALED CONCRETE	4" VINYL COVE	1/2" DRYWALL, TAPED & TEXTURE	5/8" DRYWALL, TAPED & TEXTURE	9'-0"	
PRIVATE RESTROOM	SEALED CONCRETE	4" VINYL COVE	1/2" DRYWALL, TAPED & TEXTURE	5/8" DRYWALL, TAPED & TEXTURE	9'-0"	
CONCESSIONS	SEALED CONCRETE	3" x 4" PLASTIC	P1300 1/2" x 12" T&G FLAT WHITE PVC PANELS	5/8" DRYWALL, TAPED & TEXTURE	9'-0"	
LADIES RESTROOM	SEALED CONCRETE	3" x 4" PLASTIC	P1300 1/2" x 12" T&G FLAT WHITE PVC PANELS	P1300 1/2" x 12" T&G FLAT WHITE PVC PANELS	9'-0"	
MENS RESTROOM	SEALED CONCRETE	3" x 4" PLASTIC	P1300 1/2" x 12" T&G FLAT WHITE PVC PANELS	P1300 1/2" x 12" T&G FLAT WHITE PVC PANELS	9'-0"	
UTILITY	SEALED CONCRETE	3" x 4" PLASTIC	P1300 1/2" x 12" T&G FLAT WHITE PVC PANELS	P1300 1/2" x 12" T&G FLAT WHITE PVC PANELS	9'-0"	

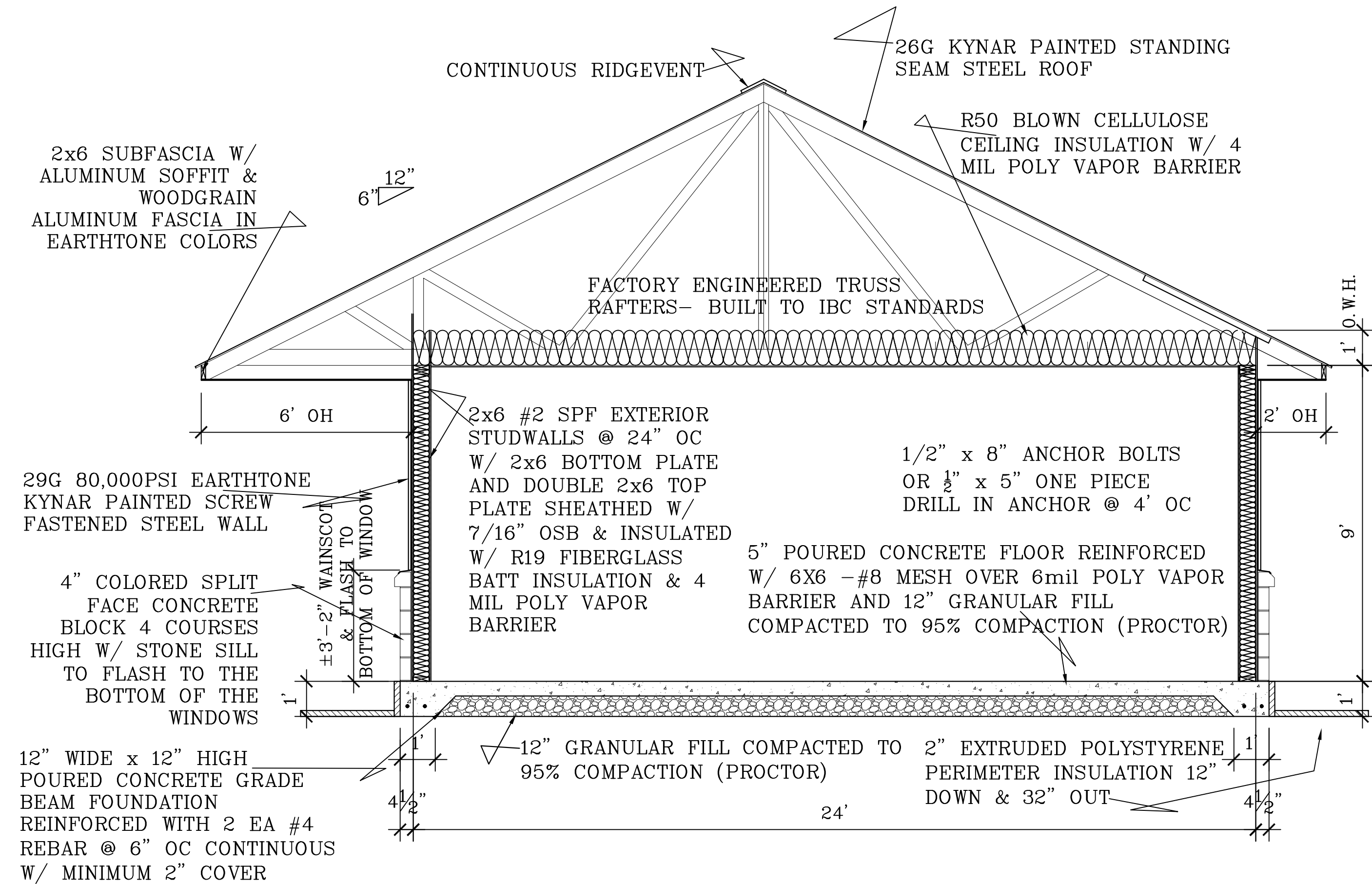




CROSS SECTION B-B  
SCALE: 3/8" = 1'-0"



CROSS SECTION C-C  
SCALE: 3/8" = 1'-0"



CROSS SECTION A-A  
SCALE: 3/8" = 1'-0"

SCALE: Noted  
DATE: 19sep17  
NAME: BL  
DWG. NO.: 16-256  
MPB Gabriel/Tom Rome/MiniGolf  
CADFILE: FinalPlanWithWindow&Finish  
Schedules 19sep17  
REVISIONS: 0

PROPOSED MINIGOLF CONCESSION BUILDING FOR  
TOM GABRIEL  
ROME WI

M.P.B. BUILDERS, INC.  
654 EAST OSHKOSH STREET  
RIFON, WISCONSIN 54971  
(920) 748 - 2501 (800) 782 - 5161  
BESTIMATE LLC  
http://bestimate.com  
714 F. Smith St  
Marshfield, WI 54449  
606@bestimate.com  
715-506-0040