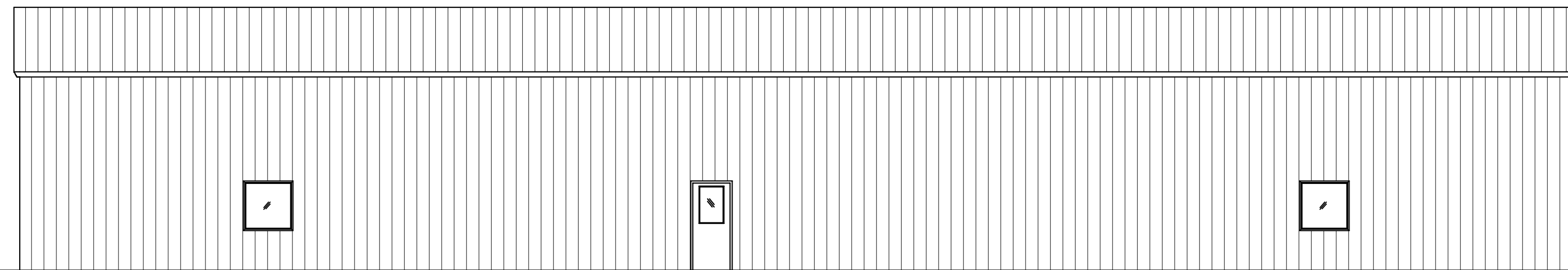


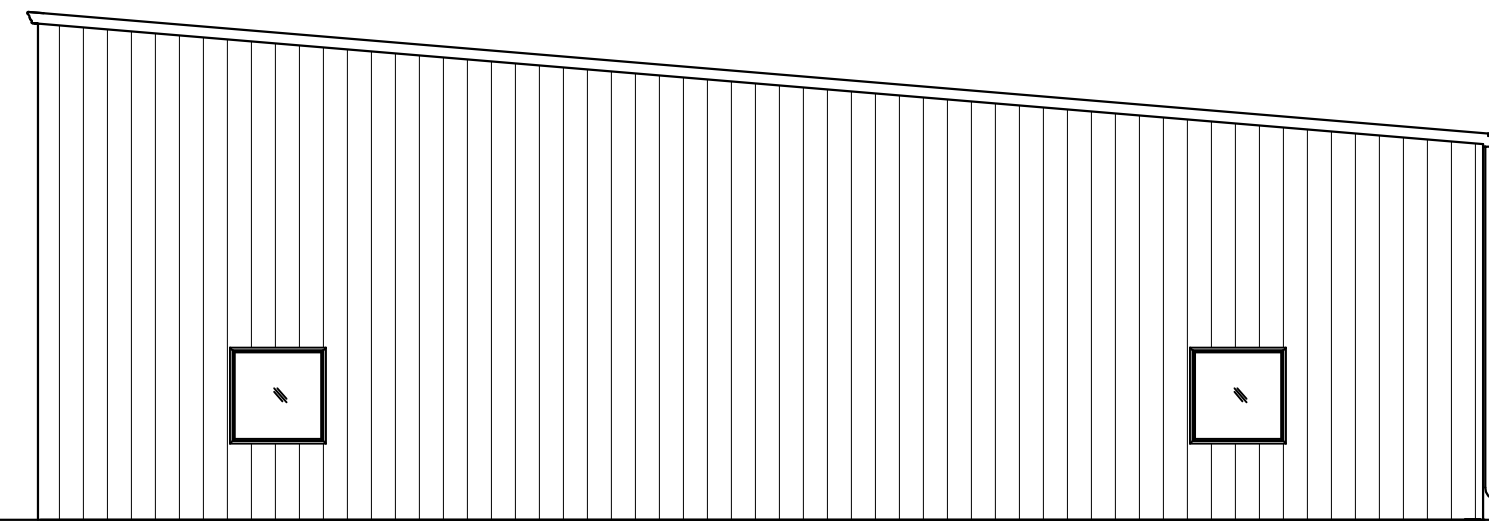
WEST ELEVATION

SCALE: 1/8" = 1'-0"



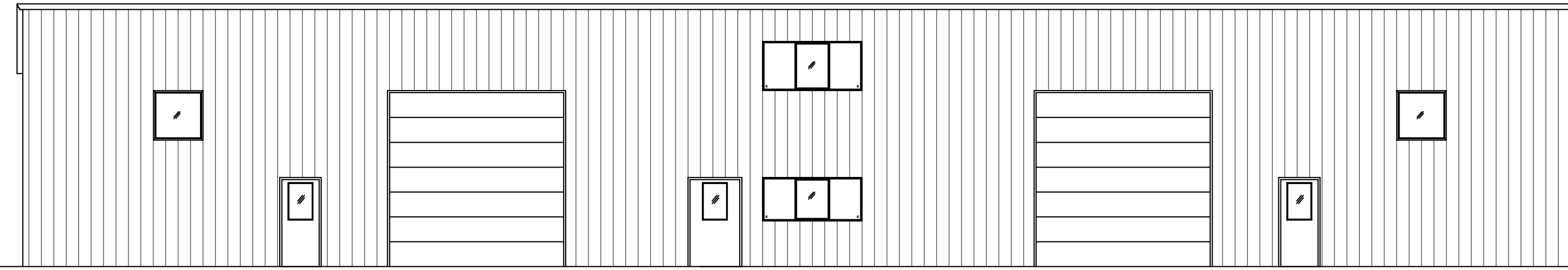
NORTH ELEVATION

SCALE: 1/8" = 1'-0"



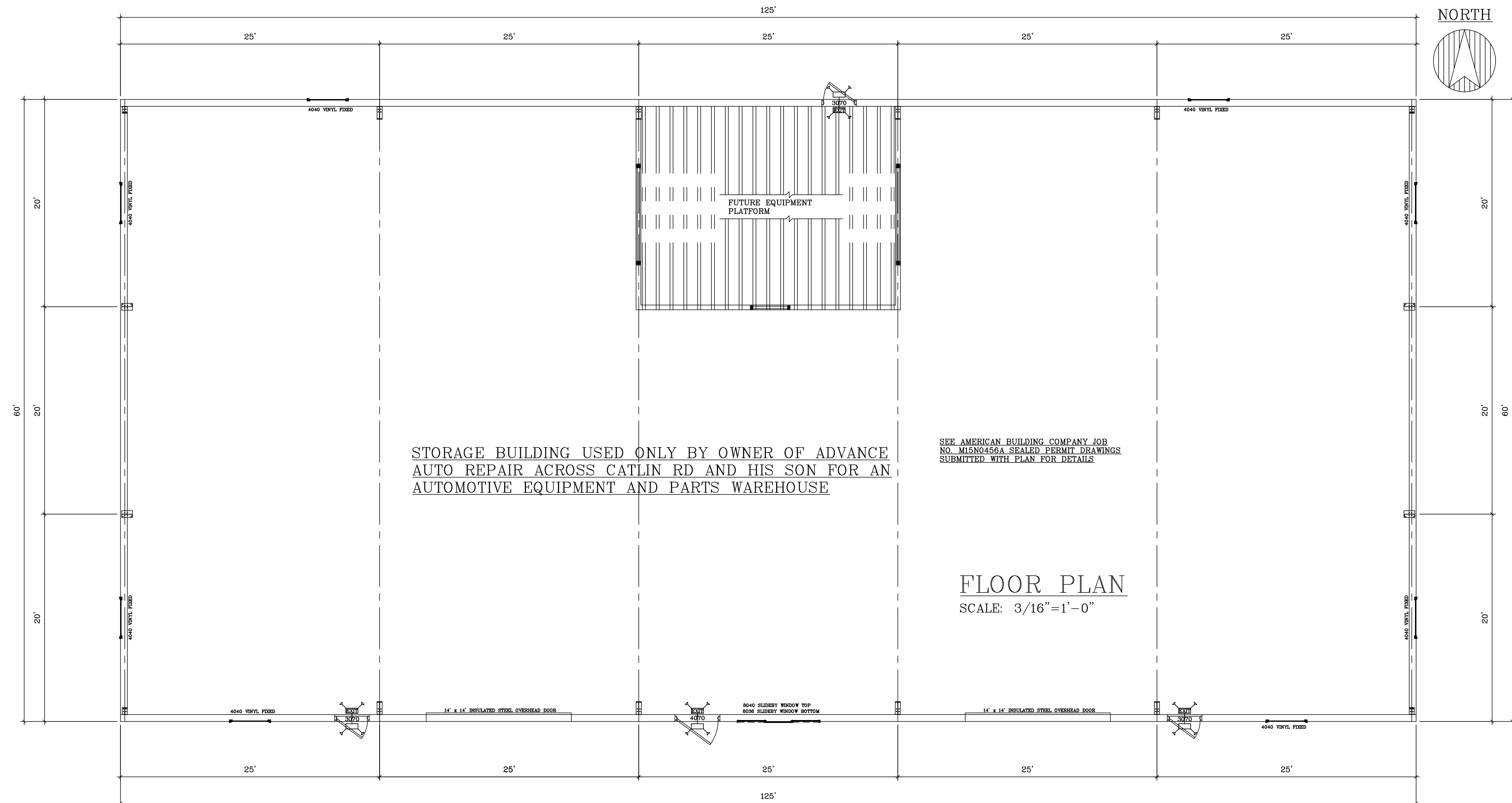
EAST ELEVATION

SCALE: 1/8" = 1'-0"



SOUTH ELEVATION

SCALE: 1/8" = 1'-0"



STORAGE BUILDING USED ONLY BY OWNER OF ADVANCE AUTO REPAIR ACROSS CATLIN RD AND HIS SON FOR AN AUTOMOTIVE EQUIPMENT AND PARTS WAREHOUSE

SEE AMERICAN BUILDING COMPANY JOB NO. M16N0456A SEALED PERMIT DRAWINGS SUBMITTED WITH PLAN FOR DETAILS

FLOOR PLAN

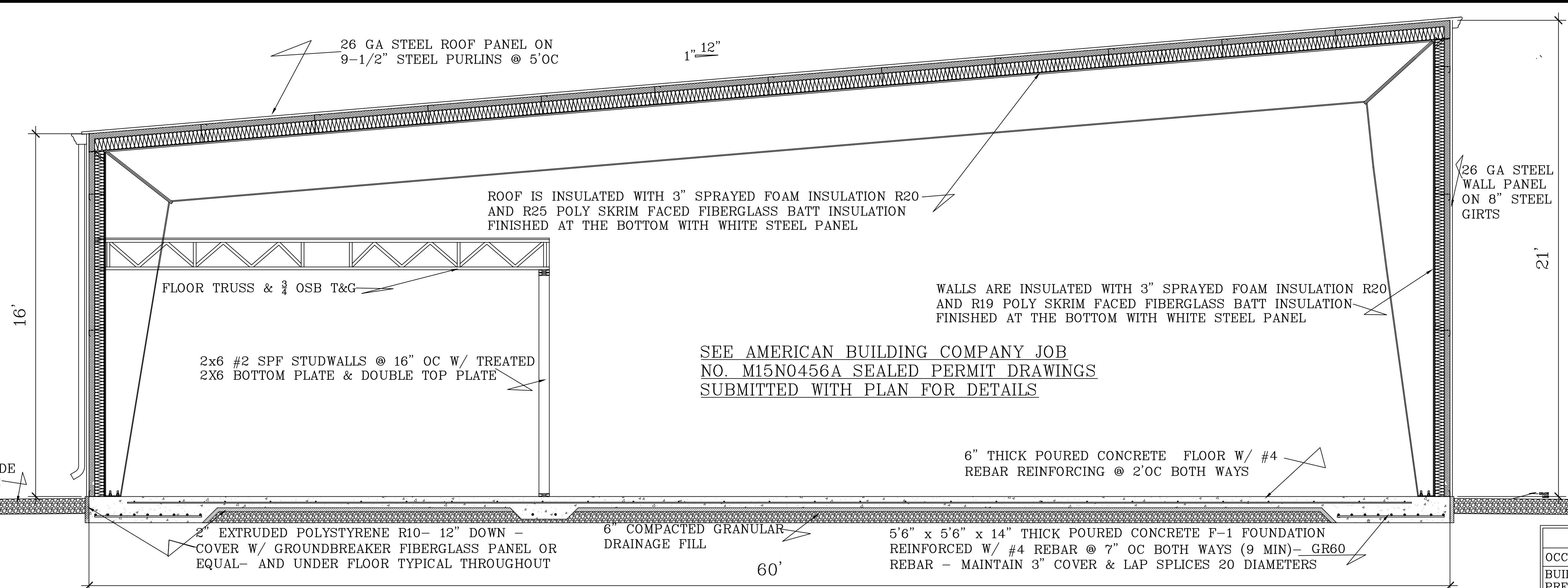
SCALE: 3/16" = 1'-0"

SCALE: NOTED
DATE: 16MARI16
NAME: BL
DWG. NO.: 16-247
CADFILE:
REVISIONS:
0

AUTOMOTIVE EQUIPMENT AND PARTS WAREHOUSE
contractor: FROEBA CONSTRUCTION

BESTIMATE LLC
<http://bestimatellc.com>
714 E Ninth St
Marshfield, WI 54449
bob@bestimatellc.com
715-506-0040



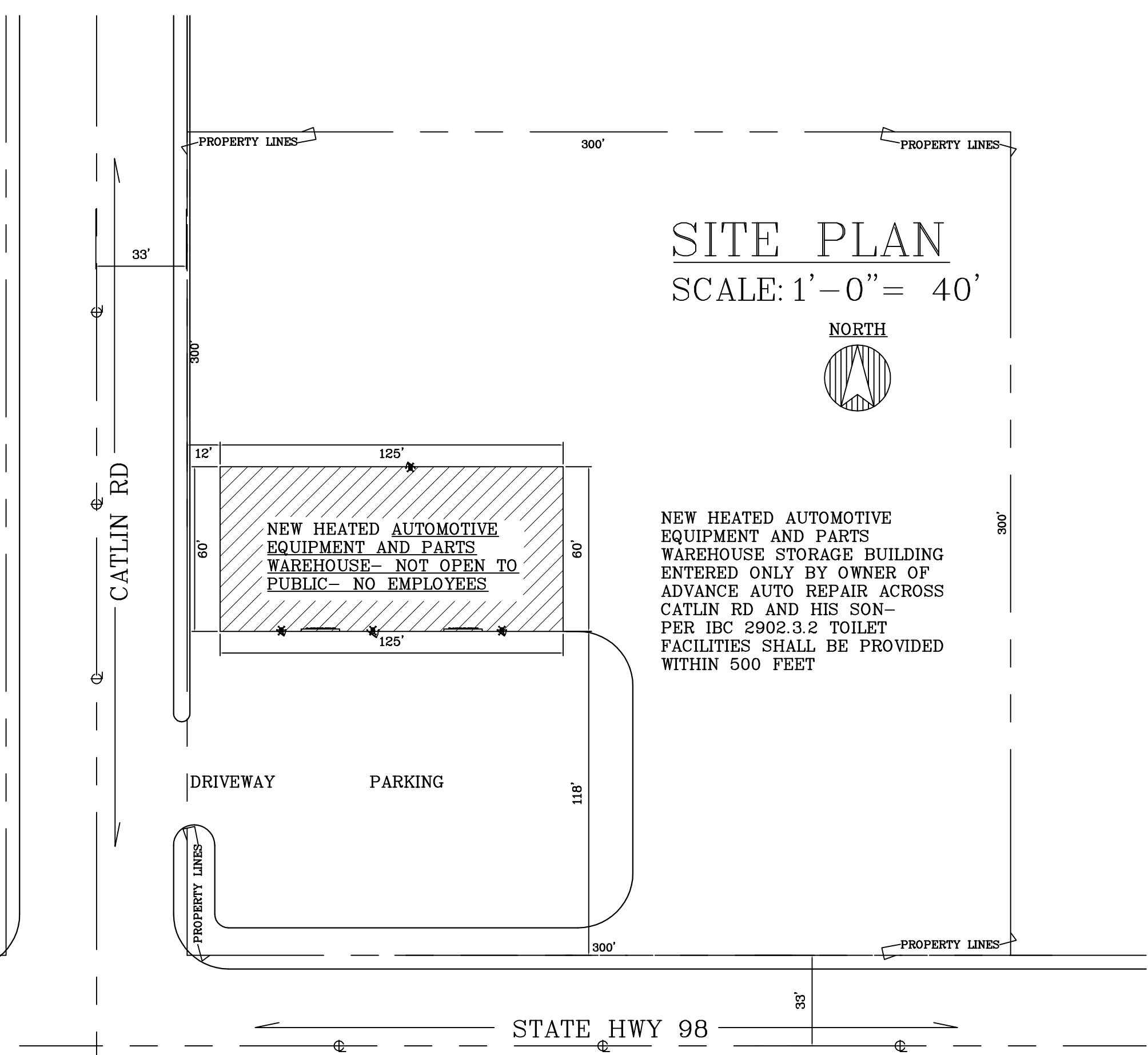


CROSS SECTION A-A
SCALE: 3/8" = 1'-0"

CONSTRUCTION NOTES	
OCCUPANCY:	S-1 MODERATE HAZARD STORAGE
BUILDING IS	7,500 SF ONE STORY HEATED UNSPRINKLERED PRE-ENGINEERED STEEL FRAME BUILDING > 50,000 CU.FT.
TYPE VB	COMBUSTIBLE UNPROTECTED CLASS OF CONSTRUCTION

DESIGN LOADS	
COLLATERAL LOAD	ROOF MEMBERS ONLY, INCLUDING CEILING LINER WEIGHT = 3 PSF
LIVE LOAD	ROOF MEMBERS, WITH REDUCTION ON SUPPORTING FRAMES PER CODE = 20 PSF
SNOW LOAD	ROOF SNOW LOAD = 35 PSF PARTIALLY EXPOSED THERMAL CONDITION = ALL STRUCTURES THAT DO NOT OTHERWISE QUALIFY AS EITHER "STRUCTURES KEPT JUST ABOVE FREEZING AND OTHERS" OR "UNHEATED STRUCTURES AND STRUCTURES INTENTIONALLY KEPT ABOVE FREEZING" GROUND SNOW LOAD (Pg) = 50 PSF THERMAL FACTOR = 1.0 SNOW EXPOSURE FACTOR (Ce) = 1.0 SNOW LOAD IMPORTANCE FACTOR (Is) = 1.0
WIND LOAD	EXPOSURE CATEGORY = C BASIC WIND SPEED = 90 MPH ENCLOSED ENCLOSURE CLASSIFICATION = +.018 & -.018 INTERNAL PRESSURE COEFFICIENT = 1.0 WIND IMPORTANCE FACTOR (I) = +17.35 & -23.13 PSF COMPONENT & CLADDING DESIGN PRESSURE =
SEISMIC LOAD	EQUIVALENT LATERAL FORCE PROCEDURE SHORT PERIOD SPECTRAL RESPONSE ACCELERATION Ss = 10%g .2s SITE CLASS = D SEISMIC IMPORTANCE FACTOR = 1 SEISMIC DESIGN CATEGORY = B SPECTRAL SHORT PERIOD ACCELERATION: Sds = .107g SPECTRAL DESIGN 1 SECOND PERIOD ACCELERATION: Sd1 = .08g TRANSVERSE DIRECTION OCBF (X-BRACING) Base R = <3.25 Shear V = pCsw p = 1.00 Cs = Sds / (R/I) = .0356 TRANSVERSE DIRECTION OMF (RIGID FRAMES) Base R = <3.5 Shear V = pCsw p = 1.00 Cs = Sds / (R/I) = .0356 LONGITUDINAL DIRECTION OCBF (X-BRACING) Base R = <3.25 Shear V = pCsw p = 1.00 Cs = Sds / (R/I) = .0356
FLOOR TRUSS LOAD	TOP CHORD LIVE LOAD = 125 PSF TOP CHORD DEAD LOAD = 10 PSF BOTTOM CHORD DEAD LOAD = 5 PSF
CONCRETE REQUIREMENTS	SLAB ON GRADE COMPRESSIVE STRENGTH MINIMUM PSI @ 28 DAYS = 3500 PSI FOOTING FOUNDATIONS COMPRESSIVE STRENGTH MINIMUM PSI @ 28 DAYS = 3000 PSI WALL COMPRESSIVE STRENGTH MINIMUM PSI @ 28 DAYS = 4000 PSI CONCRETE REINFORCING STEEL - Fy (ASTM A615, GRADE 60) = 60000 PSI
SOILS INFORMATION	CLASS OF MATERIALS = 4 FIRM ALLOWABLE SOIL BEARING PRESSURE = 2000 PSF

NEW HEATED AUTOMOTIVE EQUIPMENT AND PARTS WAREHOUSE STORAGE BUILDING ENTERED ONLY BY OWNER OF ADVANCE AUTO REPAIR ACROSS CATLIN RD AND HIS SON-
PER IBC 2902.3.2 TOILET FACILITIES SHALL BE PROVIDED WITHIN 500 FEET
ADVANCED AUTO IS ACROSS THE STREET WITH HANDICAPPED PARKING AND RESTROOM.
CUSTOMERS AND/OR POSSIBLE FUTURE EMPLOYEES ARE IN THE EXISTING ADVANCED AUTO BUILDING ONLY.



SITE PLAN
SCALE: 1'-0" = 40'

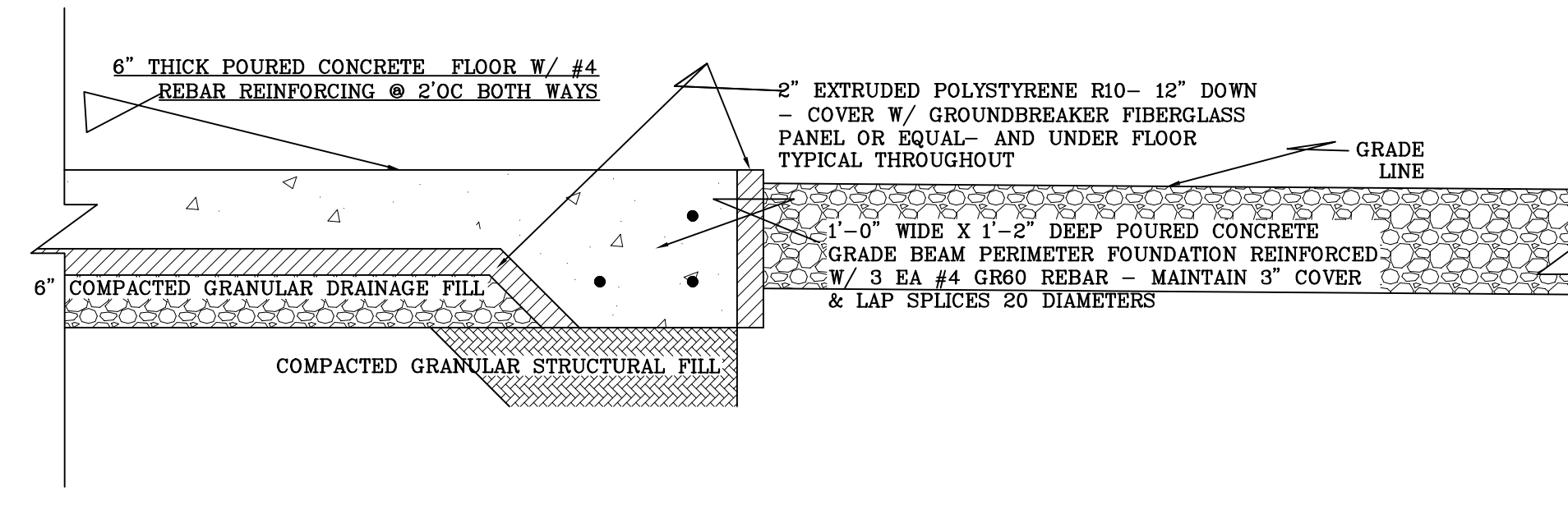
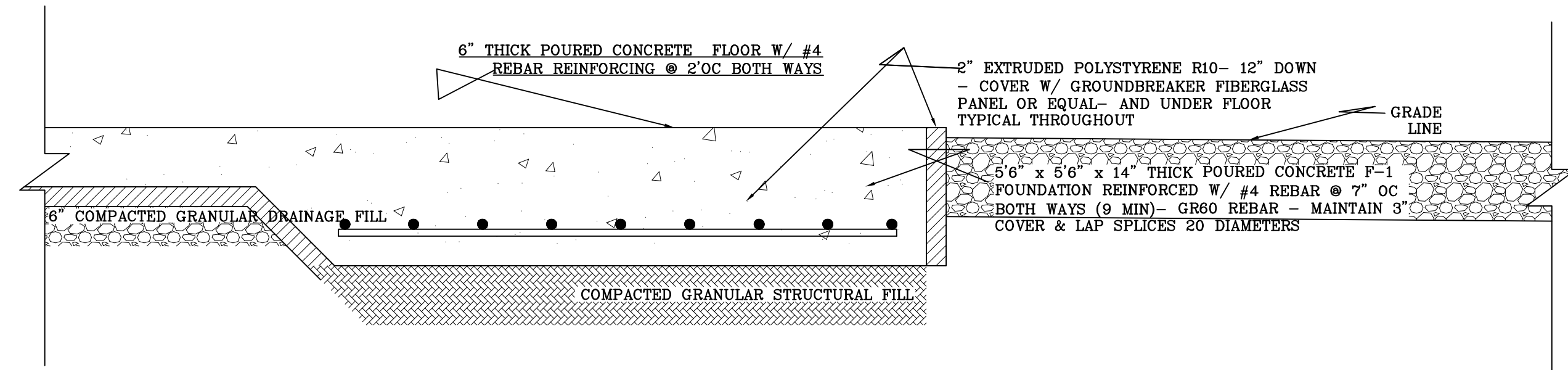
SHEET INDEX	
PAGE	CONTENTS
1 OF 3	SITE PLAN, CROSS SECTION, DESIGN LOADS, CONSTRUCTION NOTES
2 OF 3	FLOOR PLAN & ELEVATIONS
3 OF 3	FOUNDATION PLAN & DETAILS

BESTIMATE LLC
http://bestimatellc.com
714 E Ninth St
Marshfield, WI 54449

AUTOMOTIVE EQUIPMENT AND PARTS WAREHOUSE
contractor: FROEBA CONSTRUCTION

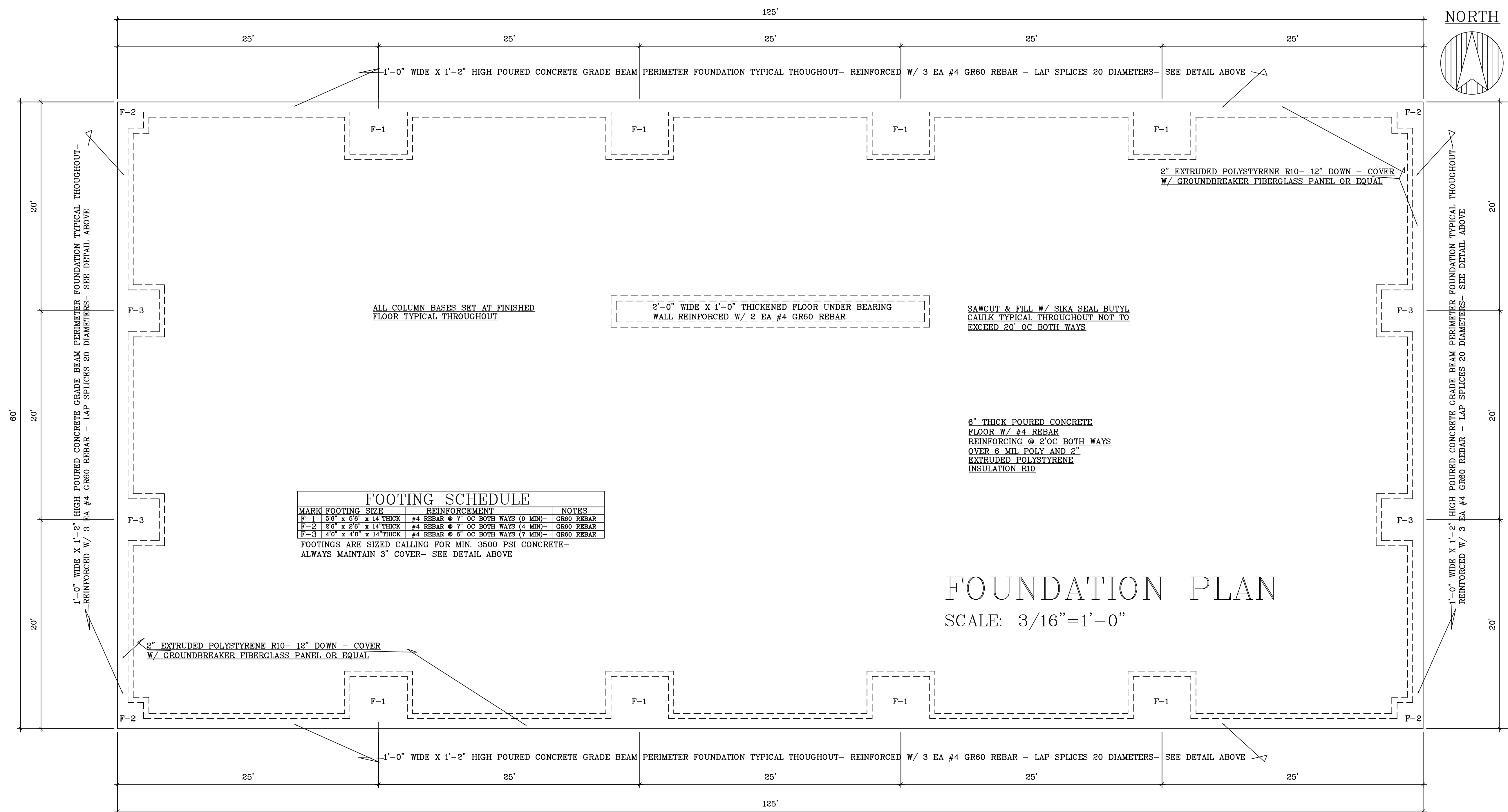
SCALE: NOTED
DATE: 16MARI16
NAME: BL
DWG. NO.: 16-247
CADFILE:
REVISIONS: 0

PAGE NO:
1 of 3



F-1 FOUNDATION DETAIL, F-2 & F-3
SIMILAR- SEE FOOTING SCHEDULE
SCALE: 1" = 1'-0"

GRADE BEAM DETAIL, TYPICAL
THROUGHOUT SCALE: 1" = 1'-0"



FOUNDATION PLAN
SCALE: 3/16" = 1'-0"

SCALE: NOTED
DATE: 16MAR16
NAME: BL
DWG. NO.: 16-247
CADFILE:
REVISIONS:
0

AUTOMOTIVE EQUIPMENT AND PARTS WAREHOUSE
contractor: FROEBA CONSTRUCTION

BESTIMATE LLC
http://bestimatellc.com
714 E Ninth St
Marshfield, WI 54449
bob@bestimatellc.com
715-506-0040

