

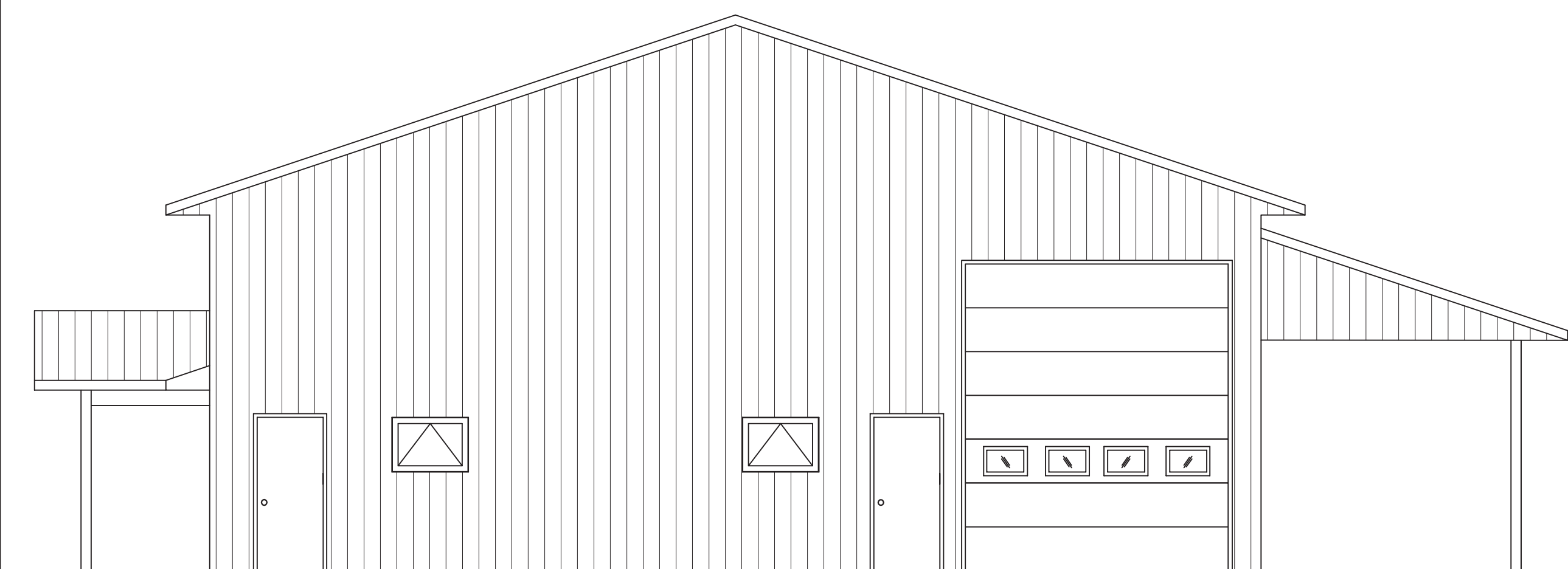
EAST ELEVATION

SCALE: 1/8"=1'-0"



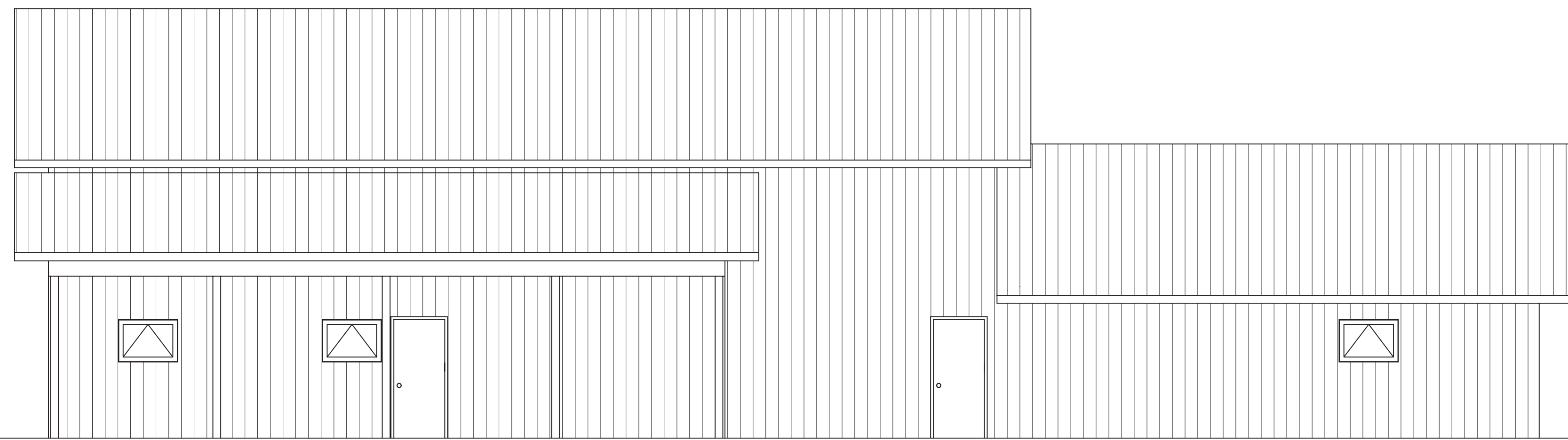
NORTH ELEVATION

SCALE: 1/8"=1'-0"



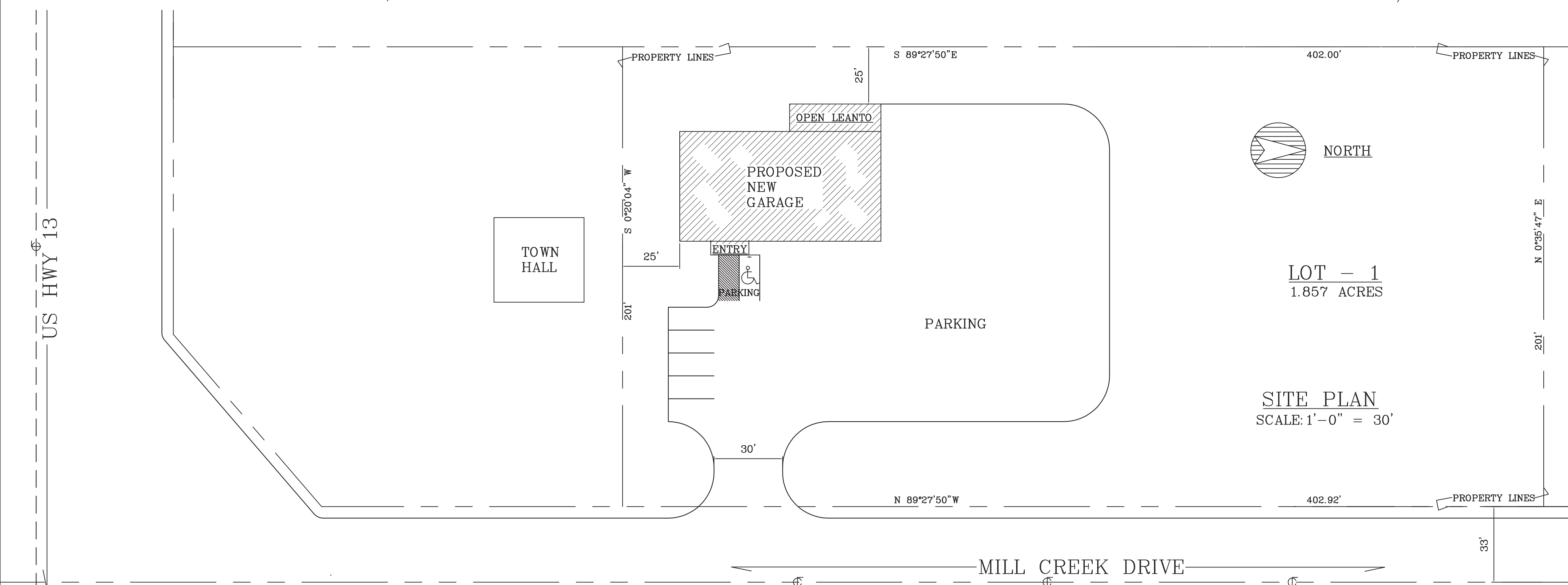
WEST ELEVATION

SCALE: 1/8"=1'-0"



SOUTH ELEVATION

SCALE: 1/8"=1'-0"



NOTES.

THIS PROJECT IS A NEW LADDERFRAME AUTO SERVICE BUILDING
MOTOR VEHICLES AND EQUIPMENT TO BE STORED IN THIS BUILDING
ARE NOT TO EXCEED 26000#

AUTO REPAIR HIGH ROOF AREA =	2,688 SF
OFFICE & SMALL PART REPAIR LOW ROOF AREA =	1,536 SF
OPEN STORAGE LEANTO AREA =	480 SF
NEW BUILDING IS 4,880 SF ONE STORY UNSPRINKLERED CLASS S-1 WOOD FRAME CONSTRUCTION < 12,000 SF =	4,704 SF

THE ENTIRE BUILDING IS USED BY PINE VIEW AUTO

BUILDING LOADS

TRUSS LIVE LOAD	34# /SF
TRUSS LIVE LOAD @ MAX. DRIFT LOAD	98# /SF
TRUSS DEAD LOAD	10# /SF
WIND LOAD	20# /SF
SOIL BEARING CAPACITY	3,000PSI
CONCRETE MIN. PSI	3,500

REINFORCING STEEL TO BE 60,000 KSI- MIN. 3 " COVER

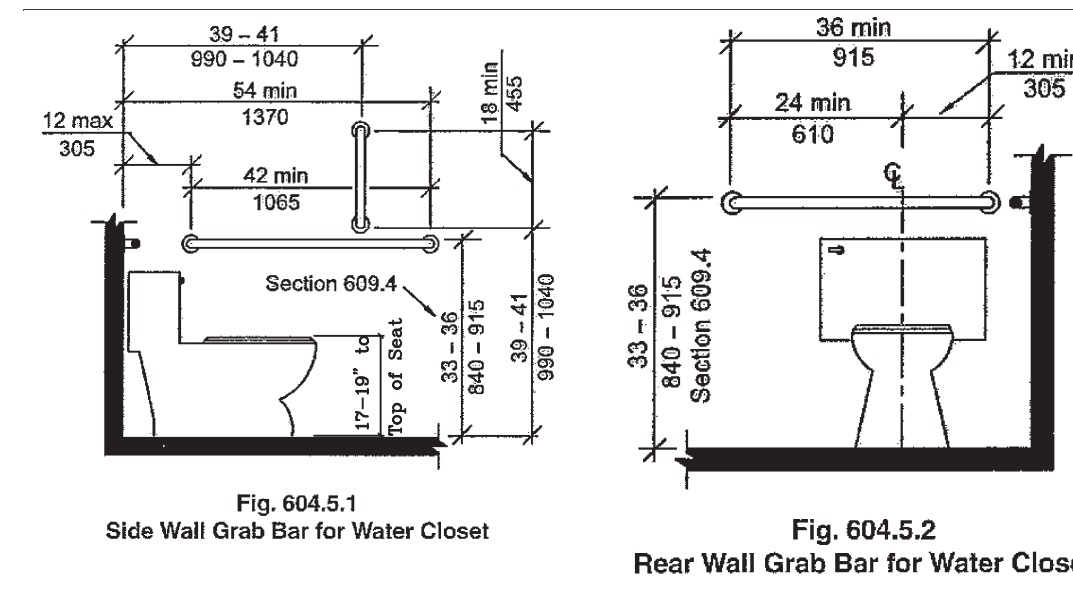
KEY TO DRAWINGS

PAGE	DESCRIPTION
A1 OF 4	PLOT PLAN & ELEVATIONS, LOADS & NOTES
A2 OF 4	FLOOR PLAN, LINTEL SCHEDULE
A3 OF 4	FOUNDATION PLAN
A4 OF 4	CROSS SECTIONS, ROOM FINISH & DOOR SCHEDULES

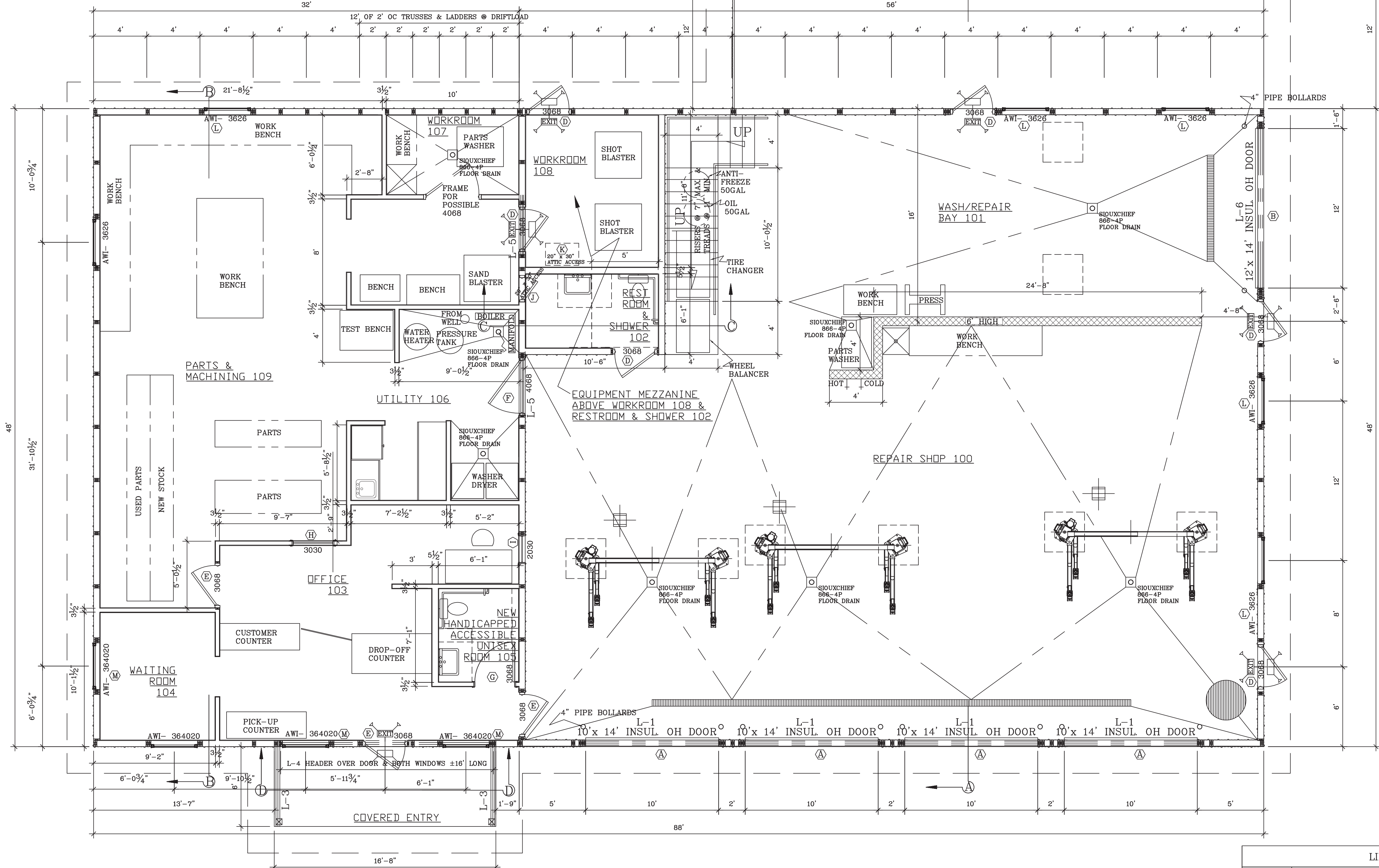
SCALE: Noted
DATE: 4/19/2012
NAME: BL
DWG. NO: 12-115
CAD FILE: PineViewAutoDalePaasch
REVISED: 19April12
12MAY12

PROPOSED ATUO REPAIR SHOP FOR
PINE VIEW AUTO - DALE PAASCH
9315 MILL CREEK DR MARSHFIELD WI 54449

O'DONNELL ENGINEERING ASSOCIATES
Architects • Engineers
W 594 Heintown Road
Chili, WI 54420
Office (715) 683-2755 • Home (715) 384-8833
odonnelleng@odonnellweb.net



RESTROOM NOTES: ANSI A117.1 Sec 606.6
 Pipe protection shall be provided under lavatories and sinks for the drain and water pipes or otherwise be configured to protect against contact. There shall be no sharp or abrasive surfaces under lavatories and sinks.
 ANSI A117.1 Sec 603.3 Mirrors located above lavatories, sinks, or counters shall be mounted with the bottom edge of the reflecting surface 40" maximum above the floor.



HANDRAILS (STAIRS)
 (a) General.
 2. Handrails or guardrails shall be provided on all open sides of stair flights consisting of more than 3 risers and on all open sides of areas that are elevated more than 24 inches above the floor or exterior grade.
 Note: A handrail provided at 30 to 38 inches above the tread nosing meets the height requirement for a guardrail on a stairway.
 4.a. Handrails and guardrails shall be designed and constructed to withstand a 200 pound load applied in any direction.
 (b) Handrails.
 1. 'Height.' Handrails shall be located at least 30 inches, but no more than 38 inches above the nosing of the treads. Measurement shall be taken from the hard structural surface beneath any finish material to the top of the rail.
 2. 'Clearance.' The clearance between a handrail and the wall surface shall be at least 1 1/2 inches.
 4. 'Projection.' Handrails and associated trim may project into the required width of stairs and landings a maximum of 4 1/2 inches on each side.
 5. 'Size and configuration.' Handrails shall be symmetrical about the vertical centerline to allow for equal wraparound of the thumb and fingers.
 a. Handrails with a round or truncated round cross sectional gripping surface shall have a maximum whole diameter of 2 inches.
 b. Handrails with a rectangular cross sectional gripping surface shall have a maximum perimeter of 8 1/2 inches with a maximum cross sectional dimension of 27/8 inches.

FLOOR PLAN

SCALE: 1/4" = 1'-0"

LINTEL SCHEDULE	
L-1	2 PLY 1-3/4 x 11-7/8" LVL LINTEL 2.0E
L-2	2 PLY 2x12 #2 SPF LINTEL
L-3	2 PLY 1-3/4 x 5-1/2" LVL LINTEL 2.0E
L-4	3 PLY 1-3/4 x 7-1/4" LVL LINTEL 2.0E
L-5	3 PLY 2x6 #2 SPF LINTEL
L-6	2 PLY 2x12 #2 SPF LINTEL



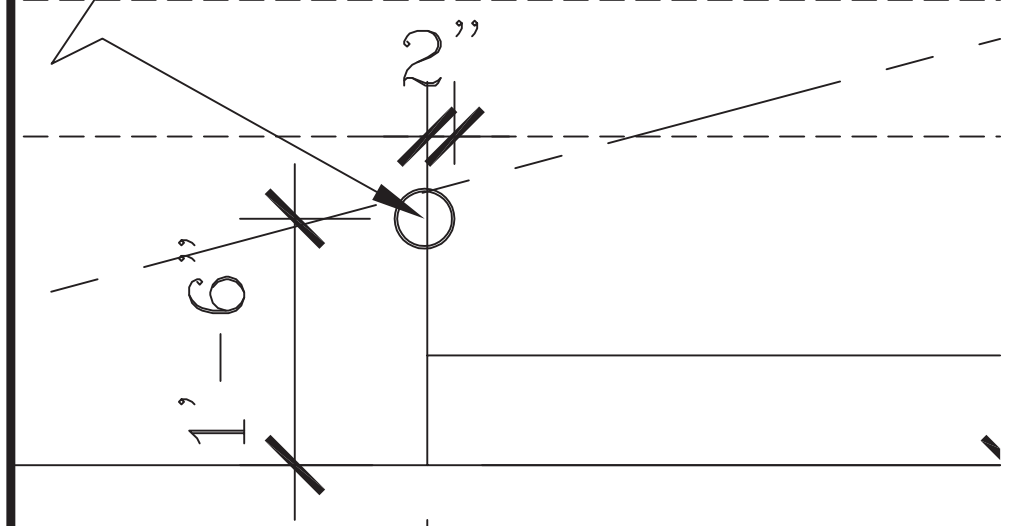
SCALE: Noted
 DATE: 4/19/2012
 NAME: BL
 DWG. NO.: 12-115
 CAD FILE: PineViewAutoDalePaasch
 19April2
 REVISED: 12MAY12

PROPOSED ATUO REPAIR SHOP FOR
 PINE VIEW AUTO - DALE PAASCH
 9315 MILL CREEK DR MARSHFIELD WI 54449

O'DONNELL ENGINEERING ASSOCIATES
 Architects • Engineers
 W 594 Heimtown Road
 Chili, WI 54420
 Office (715) 683-2755 • Home (715) 384-8833
 odonnelleng@odonnellweb.net

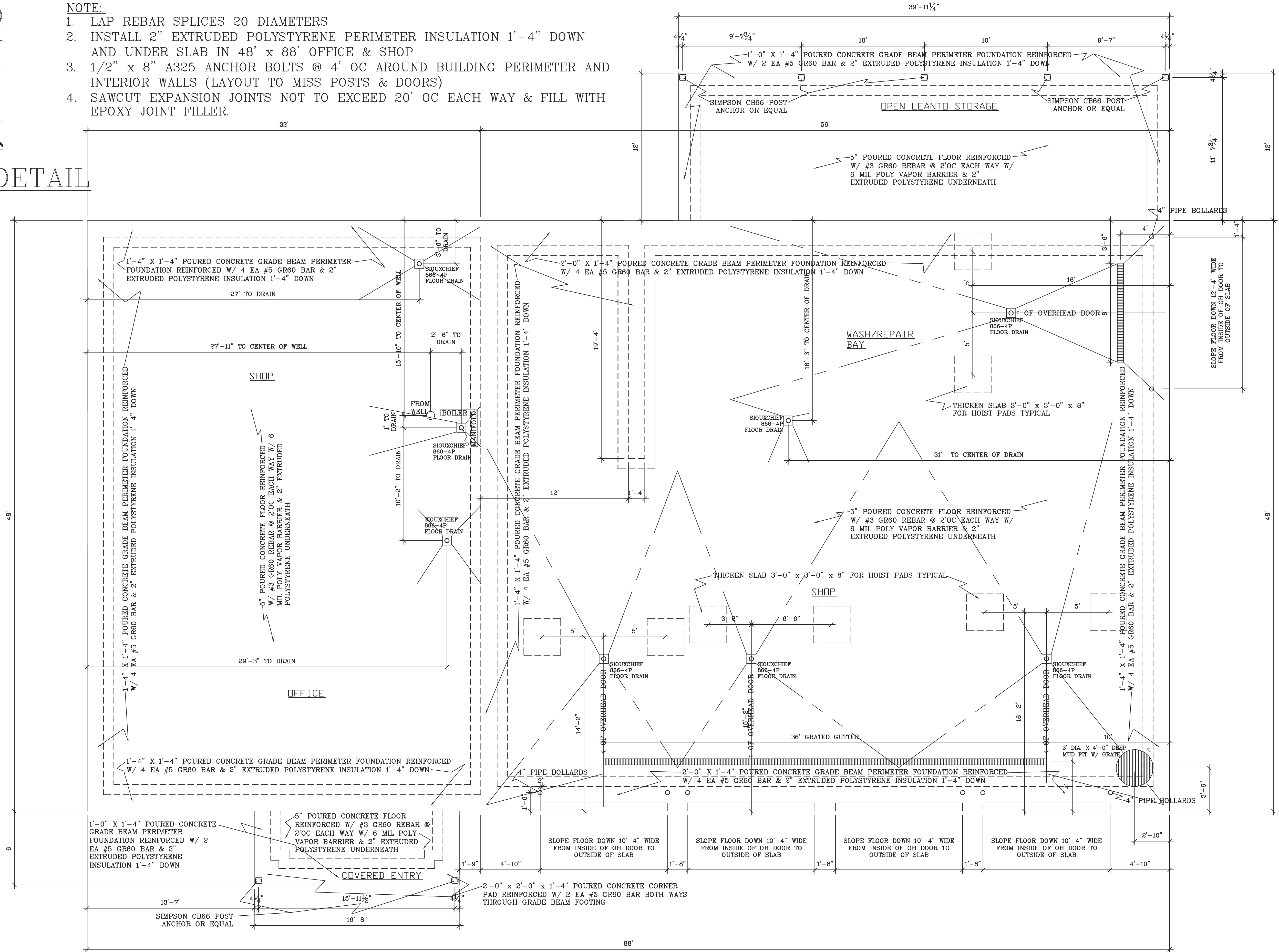
4" PIPE BOLLARD

PIPE BOLLARD DETAIL



NOTE:

1. LAP REBAR SPLICES 20 DIAMETERS
2. INSTALL 2" EXTRUDED POLYSTYRENE PERIMETER INSULATION 1'-4" DOWN AND UNDER SLAB IN 48' x 88' OFFICE & SHOP
3. 1/2" x 8" A325 ANCHOR BOLTS @ 4' OC AROUND BUILDING PERIMETER AND INTERIOR WALLS (LAYOUT TO MISS POSTS & DOORS)
4. SAWCUT EXPANSION JOINTS NOT TO EXCEED 20' OC EACH WAY & FILL WITH EPOXY JOINT FILLER.



FOUNDATION PLAN

SCALE: 1/4" = 1'-0"

SCALE/NOTED	4/19/2012
DATE:	BL
NAME:	12-115
DWG. NO.:	PineViewAutoDalePaasch
CAD FILE:	19April2
REV. NO.:	12MAY12

PROPOSED ATUO REPAIR SHOP FOR
 PINE VIEW AUTO— DALE PAASCH
 9315 MILL CREEK DR MARSHFIELD WI 54449

O'DONNELL ENGINEERING ASSOCIATES
 Architects • Engineers
 W 594 Heintown Road
 Chibi, WI 54420
 Office (715) 683-2755 • Home (715) 384-8833
 odonnelleng@odonnellweb.net

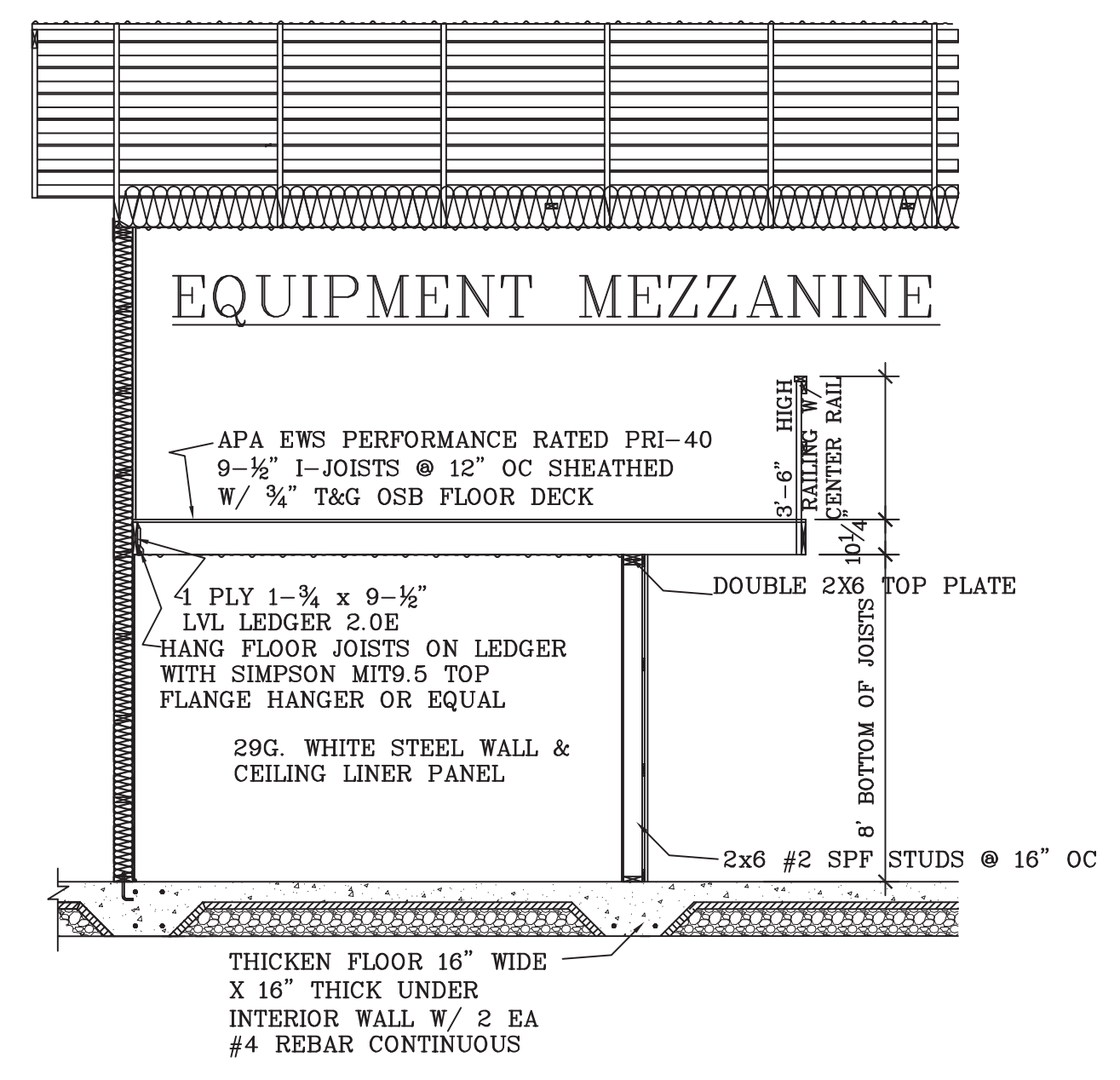
ROOM FINISH SCHEDULE							
MARK	DESCRIPTION	FLOOR	BASE	WALL	CEILING	TRIM	REMARKS
100	REPAIR SHOP	SEALED CONCRETE	NONE	29 G WHITE STEEL	29 G WHITE STEEL	METAL	16'-0"
101	WASH/REPAIR BAY	SEALED CONCRETE	NONE	29 G WHITE STEEL	29 G WHITE STEEL	METAL	16'-0"
102	RESTROOM/SHOWER	SEALED CONCRETE	4" VINYL COVE BASE	% DRYWALL, TAPED & PAINTED	29 G WHITE STEEL	METAL	16'-0" WALL PAINT 2 COATS SEMI-GLOSS EMAMEL
103	OFFICE	SEALED CONCRETE	NONE	% DRYWALL, TAPED & PAINTED	29 G WHITE STEEL	METAL	8'-0"
104	WAITING ROOM	SEALED CONCRETE	NONE	% DRYWALL, TAPED & PAINTED	29 G WHITE STEEL	METAL	8'-0"
105	UNISEX RESTROOM	SEALED CONCRETE	4" VINYL COVE BASE	% DRYWALL, TAPED & PAINTED	29 G WHITE STEEL	METAL	8'-0" WALL PAINT 2 COATS SEMI-GLOSS EMAMEL
106	UTILITY	SEALED CONCRETE	NONE	% DRYWALL, TAPED & PAINTED	29 G WHITE STEEL	METAL	8'-0"
107 & 108	WORKROOMS	SEALED CONCRETE	NONE	% DRYWALL, TAPED & PAINTED	29 G WHITE STEEL	METAL	8'-0"
109	PARTS & MACHINING	SEALED CONCRETE	NONE	% DRYWALL, TAPED & PAINTED	29 G WHITE STEEL	METAL	8'-0"

DOOR SCHEDULE							
MARK	TYPE	SIZE	DESCRIPTION	FRAME	GLASS	FIRE RATING	REMARKS
A	OVERHEAD DOOR	10'-0" X 14'-0"	THERMALLY BROKEN 2" STEEL INSULATED PANELS	WOOD FRAME	4 EA 24"x 16"-1" INSUL LITE PER DOOR	NONE	COMMERCIAL DUTY OPERATOR & 3 BUTTON INTERIOR WALL SWITCH
B	OVERHEAD DOOR	12'-0" X 14'-0"	THERMALLY BROKEN 2" STEEL INSULATED PANELS	WOOD FRAME	4 EA 24"x 16"-1" INSUL LITE PER DOOR	NONE	COMMERCIAL DUTY OPERATOR & 3 BUTTON INTERIOR WALL SWITCH
C	UNUSED						
D	EXIT DOOR	3'-0" X 7'-0"	24 G. STEEL INSULATED SLAB	16G. STEEL FRAME		NONE	STANDARD EXIT HARDWARE & CLOSER (PRIVACY LOCK & CLOSER FOR RESTROOM)
E	EXIT DOOR	3'-0" X 7'-0"	24 G. STEEL INSULATED SLAB	16G. STEEL FRAME		INSULATED LOW-E	STANDARD EXIT HARDWARE & CLOSER
F	EXIT DOOR	4'-0" X 7'-0"	24 G. STEEL INSULATED SLAB	16G. STEEL FRAME		INSULATED LOW-E	STANDARD EXIT HARDWARE & CLOSER
G	SC OAK INTERIOR DOOR	3'-0" X 6'-8"	SC OAK FLUSH DOOR SLABS	OAK JAMBS & CASING		NONE	PRIVACY LOCK & CLOSER FOR RESTROOM

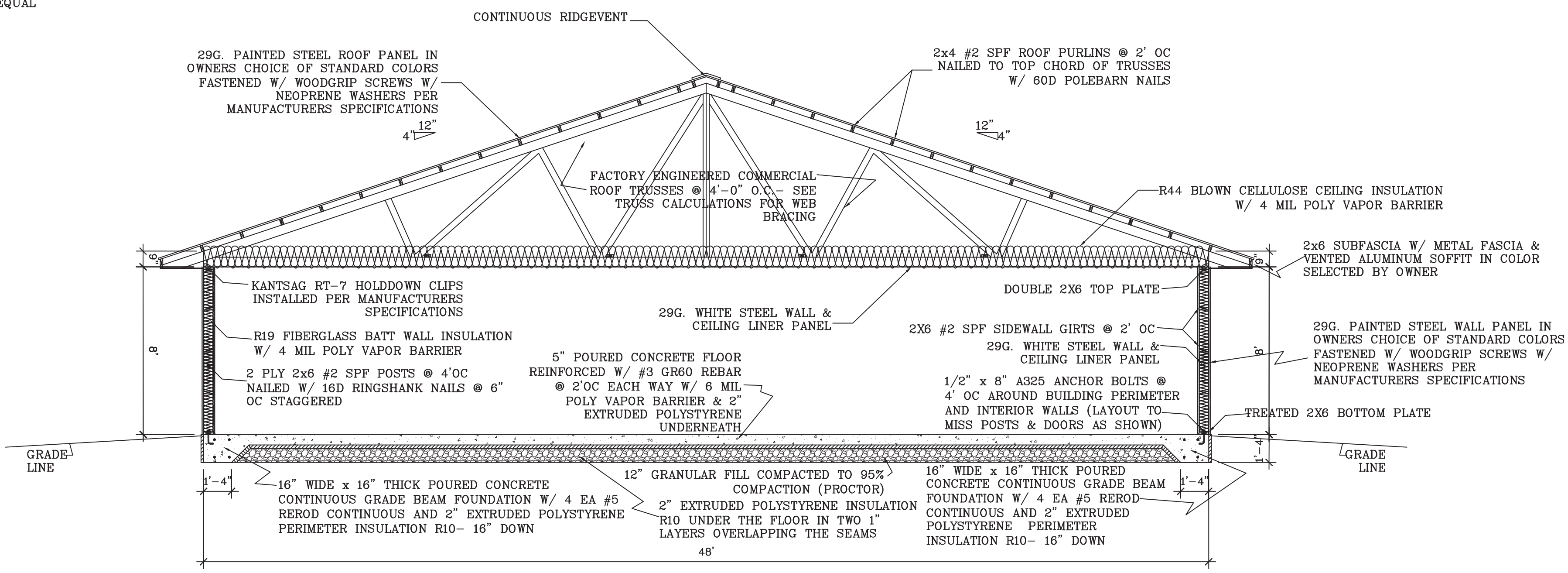
WINDOW & MISCELLANEOUS SCHEDULE							
MARK	TYPE	SIZE	DESCRIPTION	FRAME	GLASS	FIRE RATING	REMARKS
H	SC OAK BORROWED LITE	3'-0" X 3'-0"	BORROWED LITE	OAK JAMBS CASING & STOPS	ONE WAY MIRROR GLASS		
I	SC OAK BORROWED LITE	2'-0" X 3'-0"	BORROWED LITE	OAK JAMBS CASING & STOPS	ONE WAY MIRROR GLASS		
J	WALL ATTIC ACCESS DOOR	1'-8" X 2'-6"	24 G. STEEL INSULATED SLAB	16G. STEEL FRAME		NONE	SELF CLOSING
K	CEILING ATTIC ACCESS DOOR	1'-8" X 2'-6"	WOOD FRAME INSULATED DOOR-BUILD ON JOB	WOOD FRAME		NONE	SELF CLOSING
L	AWNING WINDOW	3'-6" X 2'-5-1/2"	WEATHERSHIELD V3000 AWNING AWI-3626 OPERATING	VINYL FRAME		INSULATED LOW-E	
M	AWNING STACK WINDOW	3'-6" X 5'-0"	V3000 AWNING AWI-3626 STATIONARY OVER AWI-3626 OPERATING	VINYL FRAME		INSULATED LOW-E	

LEVER LOCKSETS TO BE SCHLAGE "AL" LOCKSETS. ALL EXTERIOR DOORS AND JAMBS TO HAVE CLOSERS, "ADA" ACCEPTABLE ALUMINUM THRESHOLDS, AND WEATHERSTRIPPED JAMBS.
 DOORS ARE TO BE AJ5100 DOORS MANUFACTURED BY AJ INDUSTRIES, BLOOMER WI OR EQUAL
 OVERHEAD DOORS ARE TO BE MODEL 3216 MANUFACTURED BY CHI INDUSTRIES, Arthur, IL 61911 ASTM C518 tested R-Value: 17.54 U-Value: .057 OR EQUAL

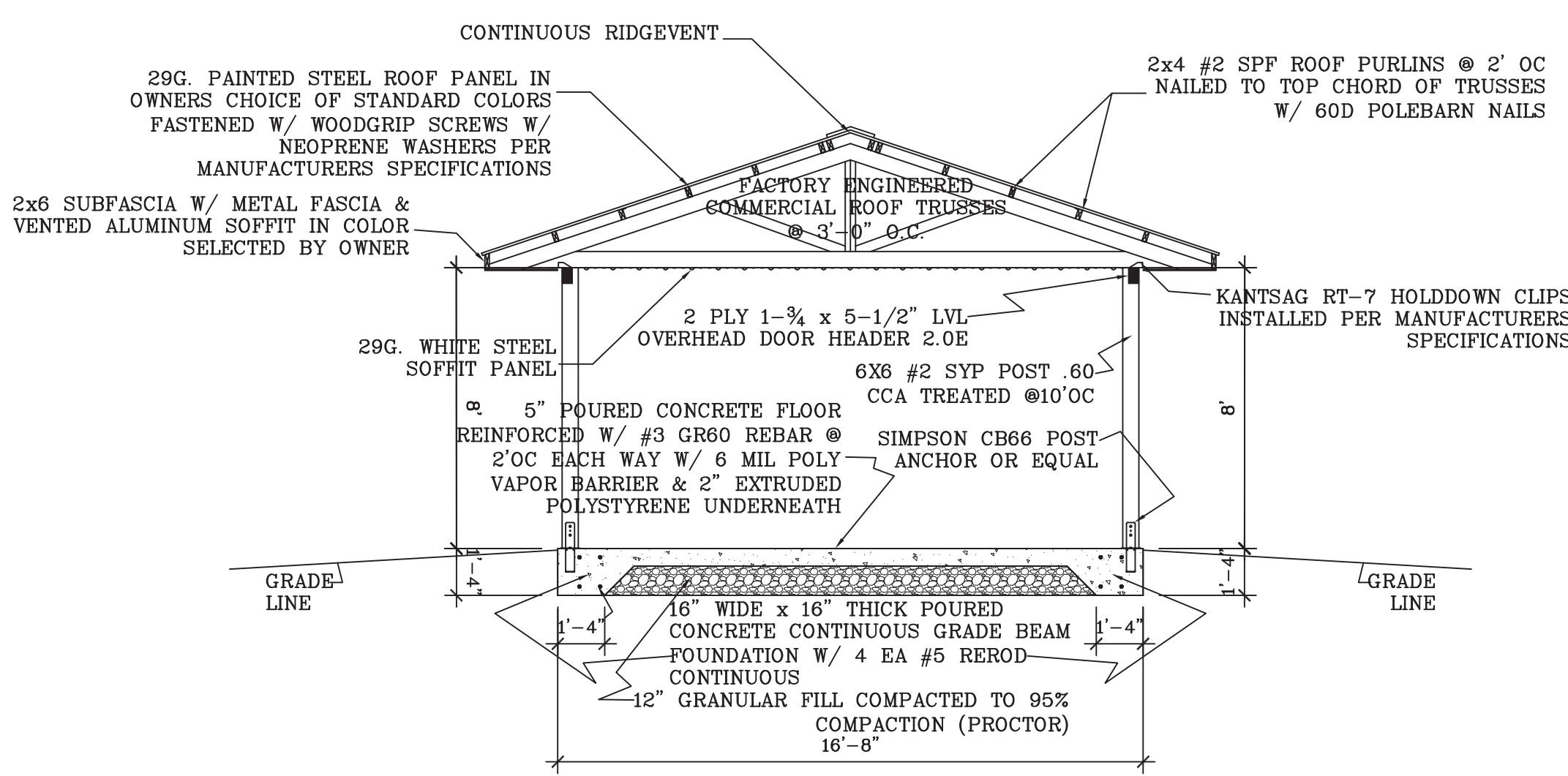
WINDOWS ARE WEATHERSHIELD VISIONS 3000 AWNING WINDOWS W/ LOW-E INSULATED GLASS U-Value: .32 SHGC: .28 OR EQUAL



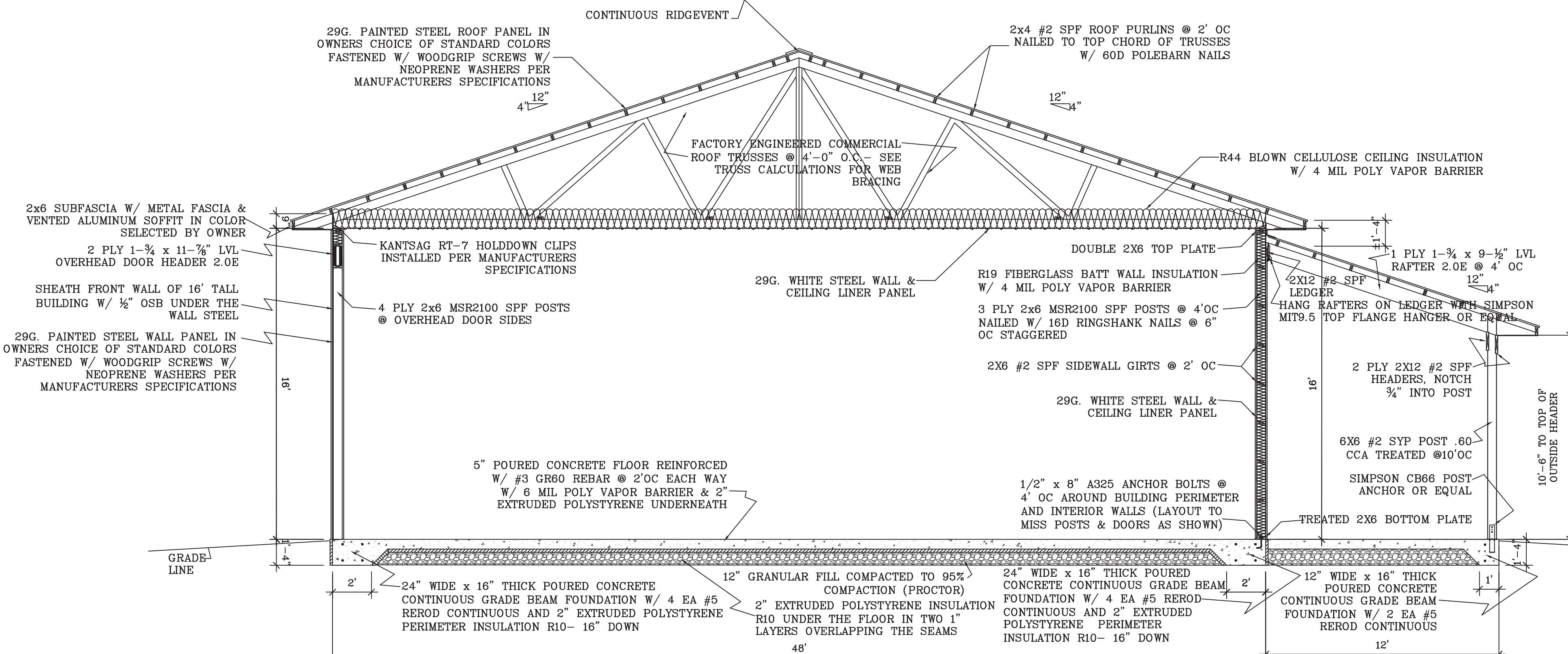
CROSS SECTION C-C
SCALE: 1/4" = 1'-0"



CROSS SECTION B-B
SCALE: 1/4" = 1'-0"



CROSS SECTION D-D
SCALE: 1/4" = 1'-0"



CROSS SECTION A-A
SCALE: 1/4" = 1'-0"

SCALE: Noted
 DATE: 4/19/2012
 NAME: BL
 DWG. NO: 12-115
 CAD FILE: PineViewAutoDalePaasch
 REVISED: 19April12
 12MAY12

PROPOSED ATUO REPAIR SHOP FOR
 PINE VIEW AUTO - DALE PAASCH
 9315 MILL CREEK DR MARSHFIELD WI 54449

O'DONNELL ENGINEERING ASSOCIATES
 Architects • Engineers
 W 594 Heintown Road
 Chibi, WI 54420
 Office (715) 683-2755 • Home (715) 384-8833
 odonnelleng@odonnellweb.net

PAGE NO:
 A4 of 4