

Figure 703.4.1 Height of Tactile Characters Above Finish Floor or Ground

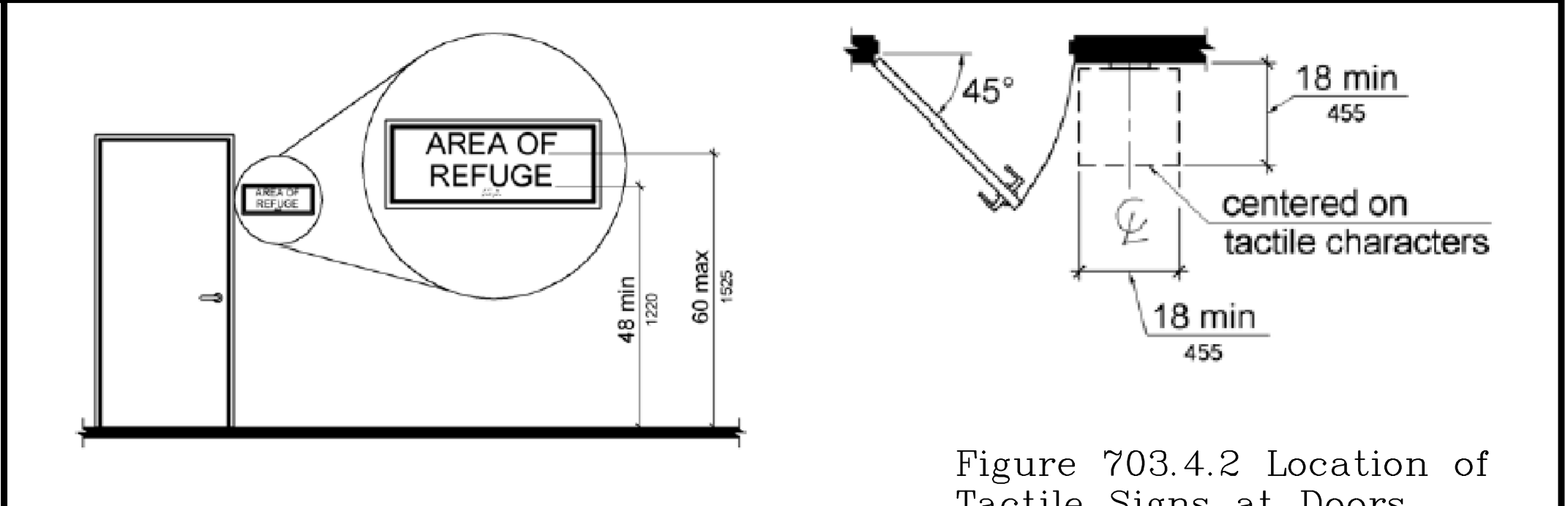
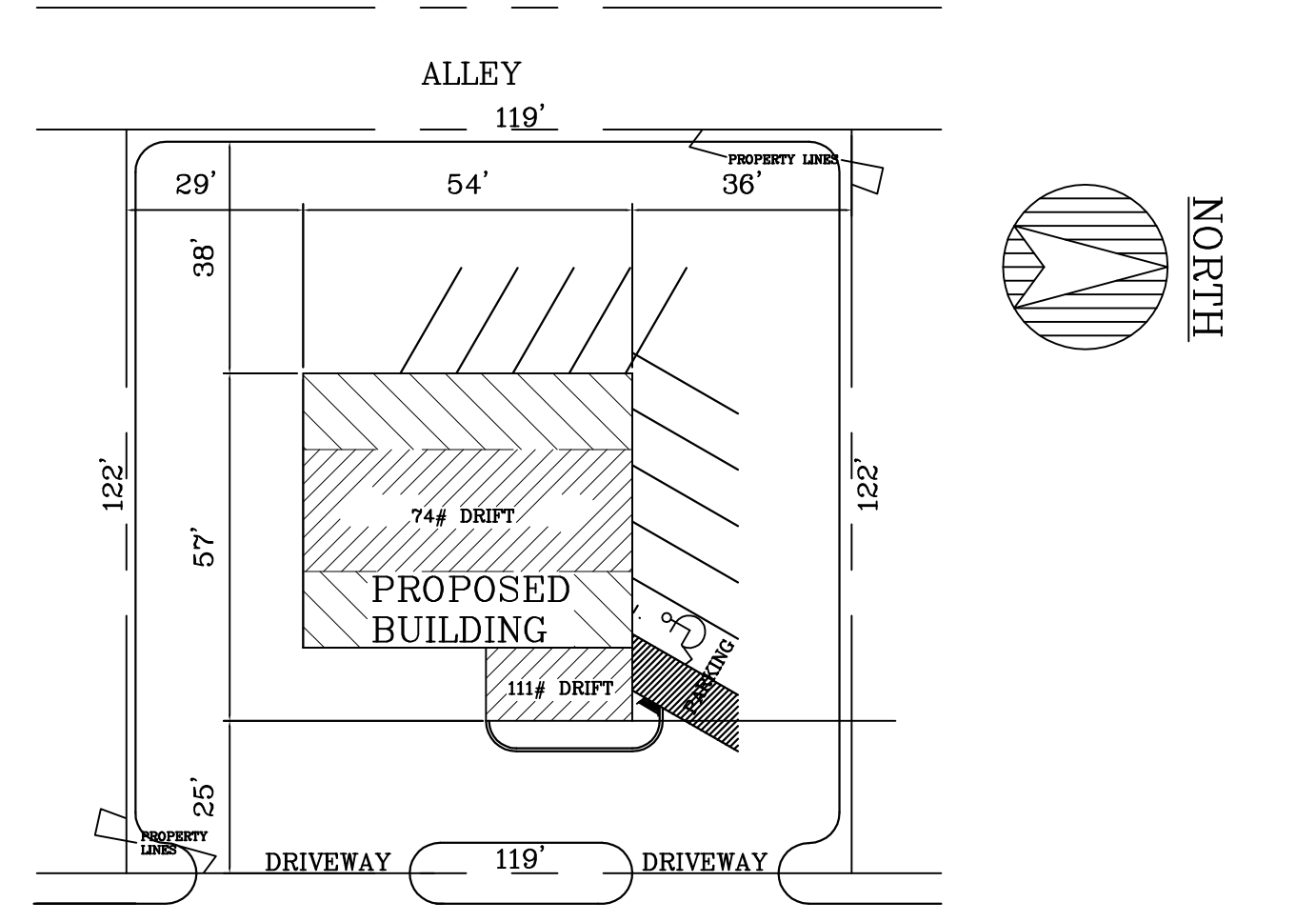


Figure 703.4.2 Location of Tactile Signs at Doors

THE STANDARDS DESIGNATE CLEAR FLOOR SPACE to accommodate a single wheelchair of at least 30 inches by 48 inches (760 by 1220mm). The space can be positioned for a forward or parallel approach to restroom elements. A portion of the clear floor space may be located under fixtures, lavatories, or accessories as long as the required knee and toe clearance is provided (Fig. 14 and many others). If properly centered in front of controls and operating mechanisms, the clear floor space will allow both left- and right-hand access.

REACH RANGES AND MOUNTING HEIGHTS For restroom accessories may vary within a facility depending on the location of individual accessories and the direction of reach required for their use. To allow use by people with limited reach range, it is required that accessories be mounted with their "operable parts" - dispensing mechanisms, start buttons, coin slots, or dispenser openings - located no more than 48 inches (1220mm) above the finish floor (Fig. 14). Where accessories are mounted over obstructions such as counters, depending on the nature and depth of the obstruction it is required that they be located between 44 inches and 48 inches (1120 and 1220mm) maximum above the finish floor. The operable portions of any accessory should be mounted no lower than 15 inches (380mm) above the floor. However, the 2009 IBC/ANSI Standards limit the operable portions of dispensers in toilet compartments to no lower than 18 inches (455mm). When determining the mounting location of restroom accessories, make sure to account for side and forward approaches.



STATE HWY 8

SITE PLAN

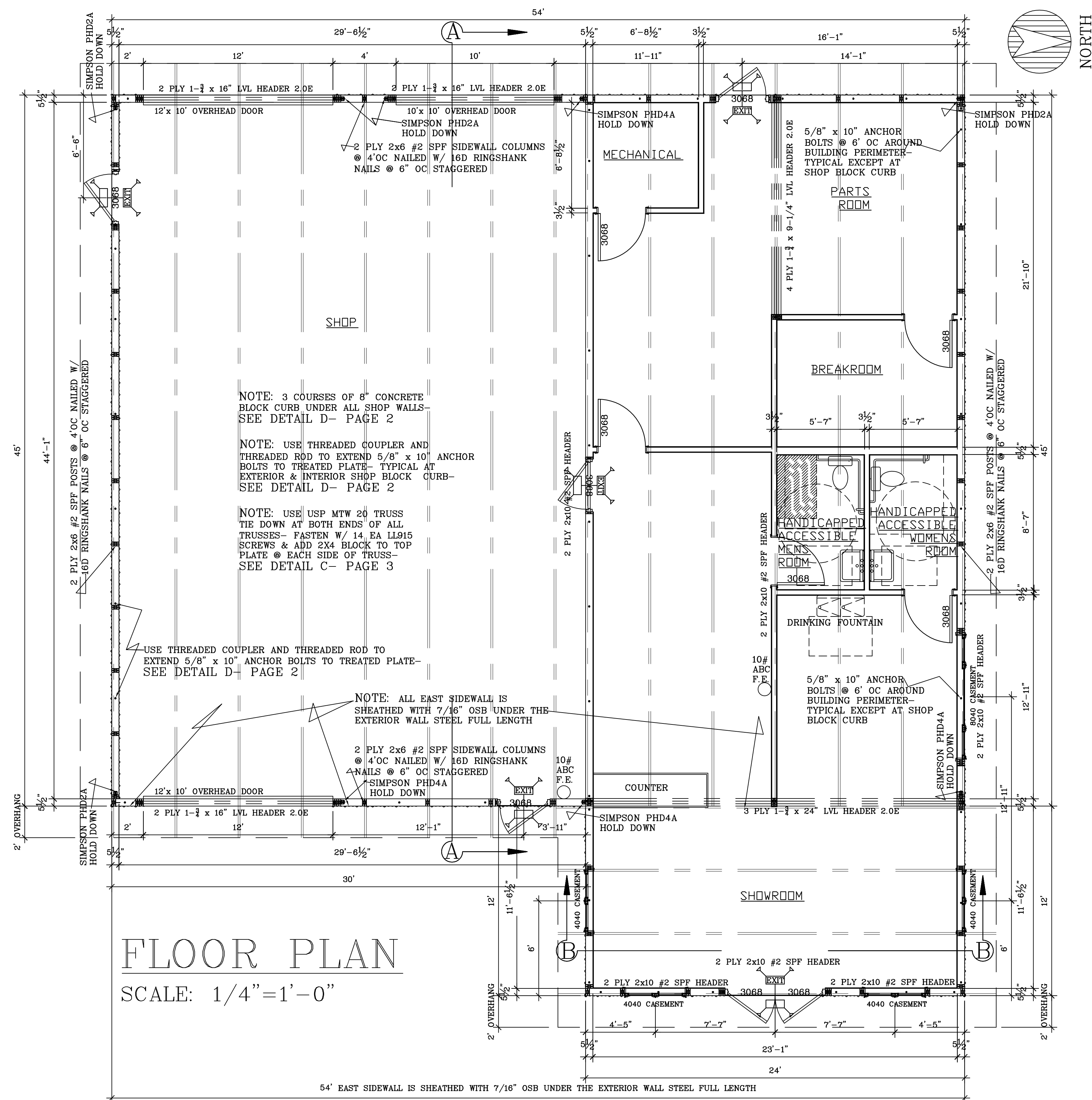
SCALE: 1' - 0" = 30'

CONSTRUCTION NOTES	
CONCRETE MIN. PSI	3,000
REINFORCING STEEL TO BE 60,000 KSI- MIN. 3" COVER	
EXTERIOR DOORS INSULATED STEEL DOORS TO HAVE ADA LEVER LOCKSETS EQUAL TO SCHLAGE "AL" ENTRY LOCKSETS, ADA ACCESSIBLE THRESHOLDS, AND WEATHERSTRIPPED JAMBS. RESTROOM DOORS TO HAVE PRIVACY LOCKS AND CLOSERS. WINDOWS ARE ANDERSEN VINYL SLIDING WINDOWS W/ 1" LOW-E INSULATED.	
NOTE: Building Owner will provide a separate room or designated space within or adjacent to the building for the separation, temporary storage and collection of recyclable materials that are likely to be generated by the building occupants. Flammable or combustible material storage shall comply with ch. SPS 314. Flammable or combustible liquid storage shall comply with ch. SPS 310.	

DESIGN LOADS	
ROOF LOAD GROUND SNOW LOAD (Pg) - 60 psf	
SNOW LOAD EXPOSURE FACTOR (Ce) - 1.0	
SNOW IMPORTANCE FACTOR (I _s) - 1.0	
ROOF THERMAL FACTOR (C _t) - 1.2	
FLAT ROOF SNOW LOAD (P _f) - 50.4 psf	
SLOPED ROOF FACTOR (C _s) - .938	
BALANCED ROOF SNOW LOAD - 47.25 psf	
UNBALANCED ROOF SNOW LOAD - 14.2 / 73.8 psf (WINDWARD/LEEWARD)	
WIND LOAD BASIC WIND SPEED (3 SEC GUST) - 90 mph	
WIND IMPORTANCE FACTOR (I _w) - 1.00	
WIND EXPOSURE - B	
BUILDING ENCLOSURE TYPE - ENCLOSED	
INTERNAL PRESSURE COEFFICIENT - 1/- 0.18	
DESIGN PRESSURE FOR COMPONENTS AND CLADDING - 15.8 / 20.5 psf	
SOILS INFO: ALLOWABLE SOIL PRESSURE = 3000 PSF	

THIS PROJECT IS A NEW HEATED 2,718 SF ONE STORY UNSPRINKLERED WOOD LADDERFRAME BUILDING < 12,000 SF. MAJOR OCCUPANCY: MERCANTILE; TYPE VB COMBUSTIBLE UNPROTECTED CLASS OF CONSTRUCTION; OCCUPANCY: M MERCANTILE

KEY TO DRAWINGS	
PAGE	DESCRIPTION
A1.0	FLOOR PLAN, PLOT PLAN & BUILDING INFORMATION
A2.0	FOUNDATION PLAN, ELEVATIONS
A3.0	BUILDING CROSS SECTIONS, WALL FRAMING DETAILS



FLOOR PLAN

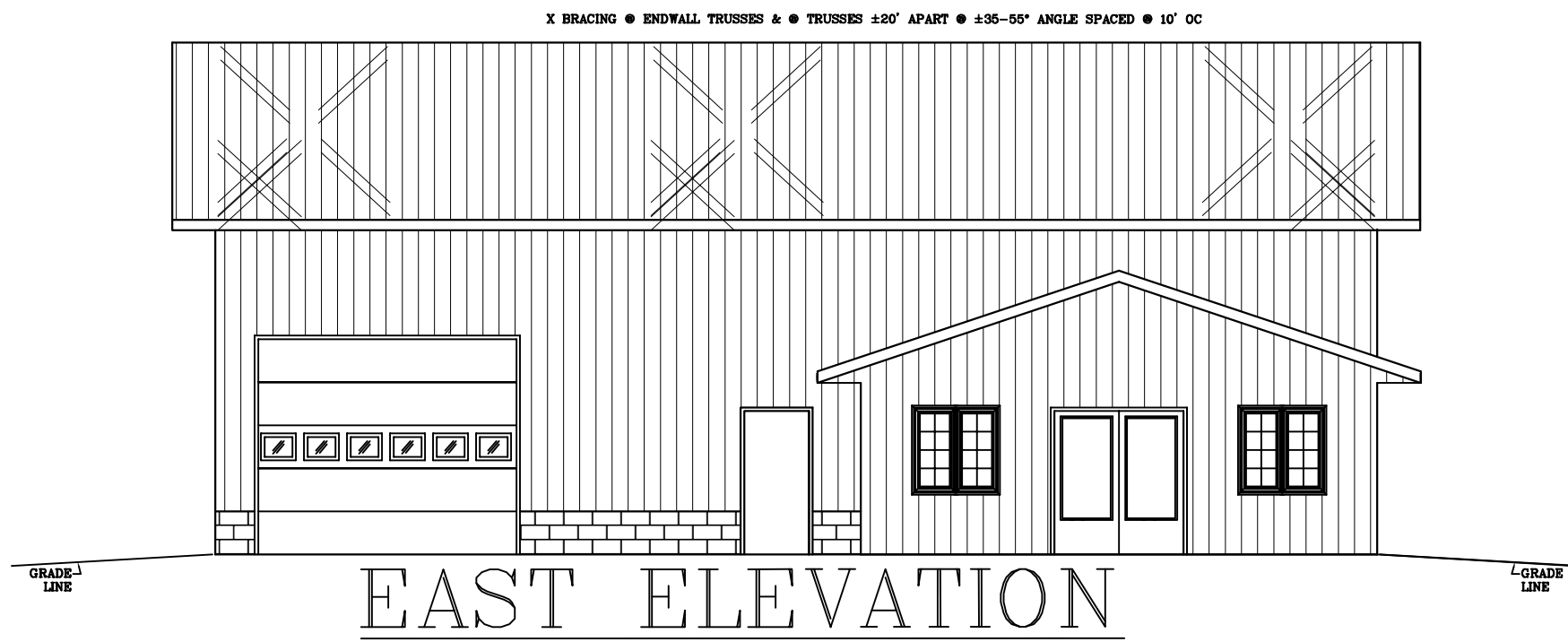
SCALE: 1/4" = 1'-0"

PROPOSED NEW BUILDING FOR
NORTHERN POWER SPORTS LLC
 5165 Linden St
 Town of Laona WI 54541

BESTIMATE LLC
<http://bestimate.com>
 bob@bestimate.com
 714 E Ninth St
 Marshfield, WI 54449

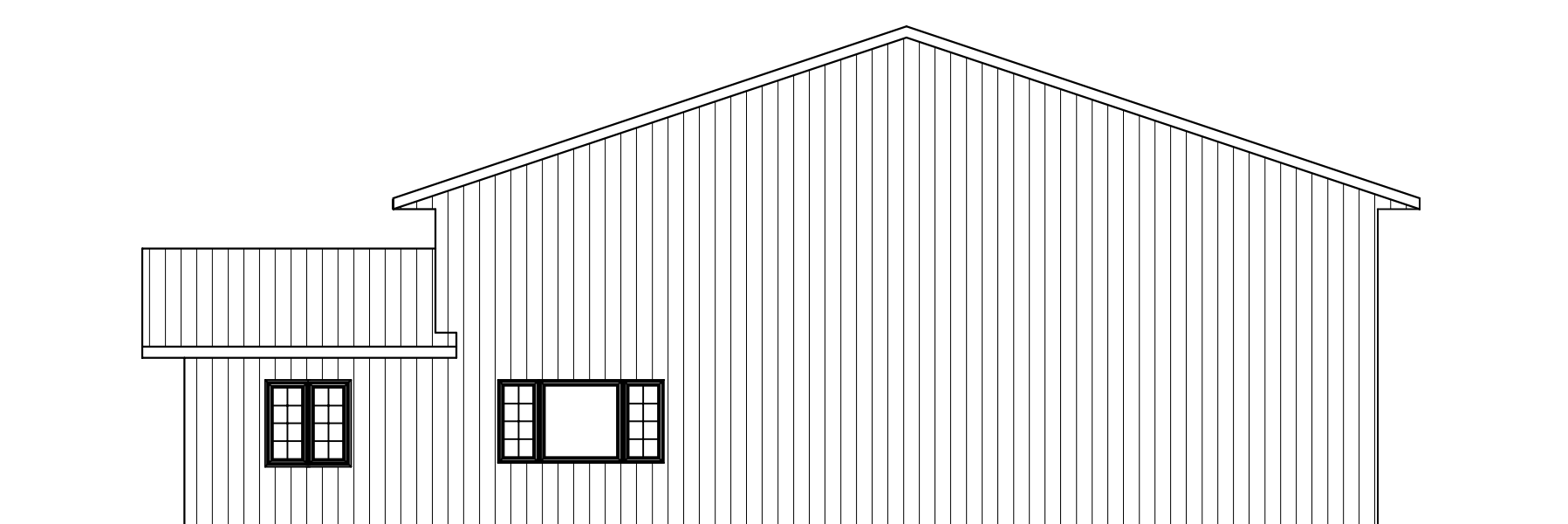


SCALE: Noted
 DATE: 2JUNI14
 NAME: BL
 DWG. NO.: 14-178
 CAD FILE: NorthernMotorsSportsLLC State ApprovedLadderFrame 2Juni14
 REVISIONS:
 0



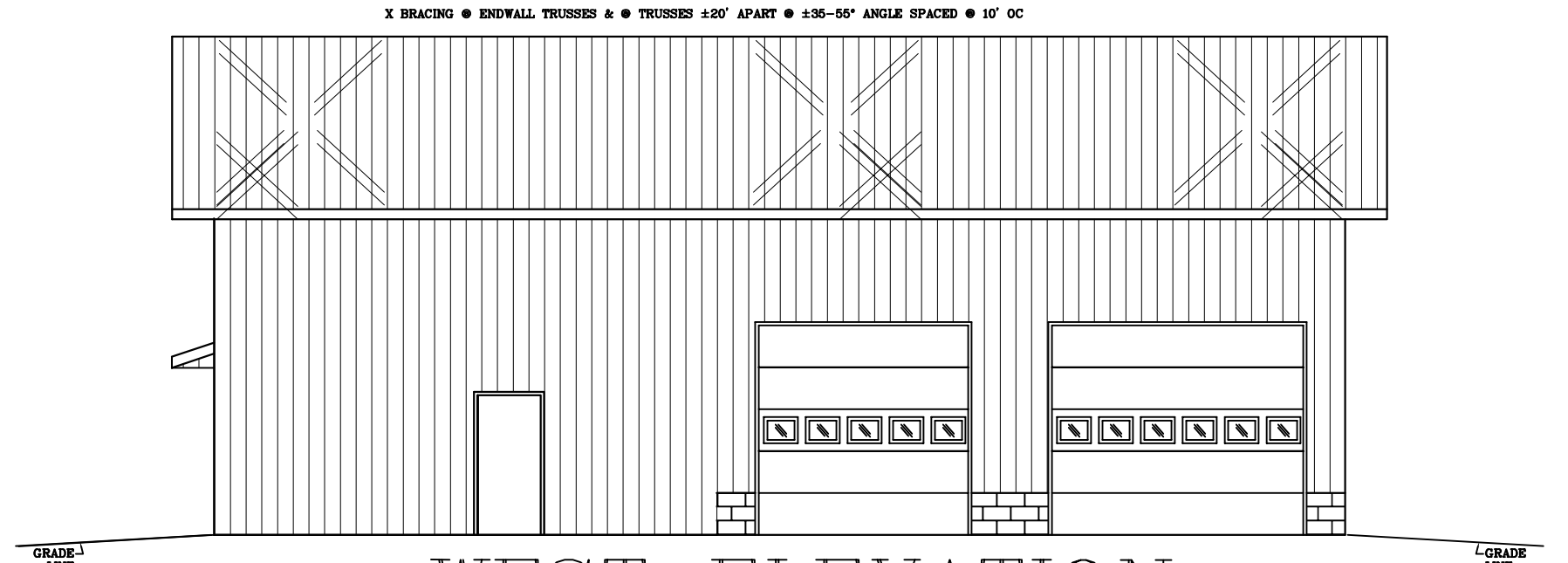
EAST ELEVATION

SCALE: 1/8" = 1'-0"



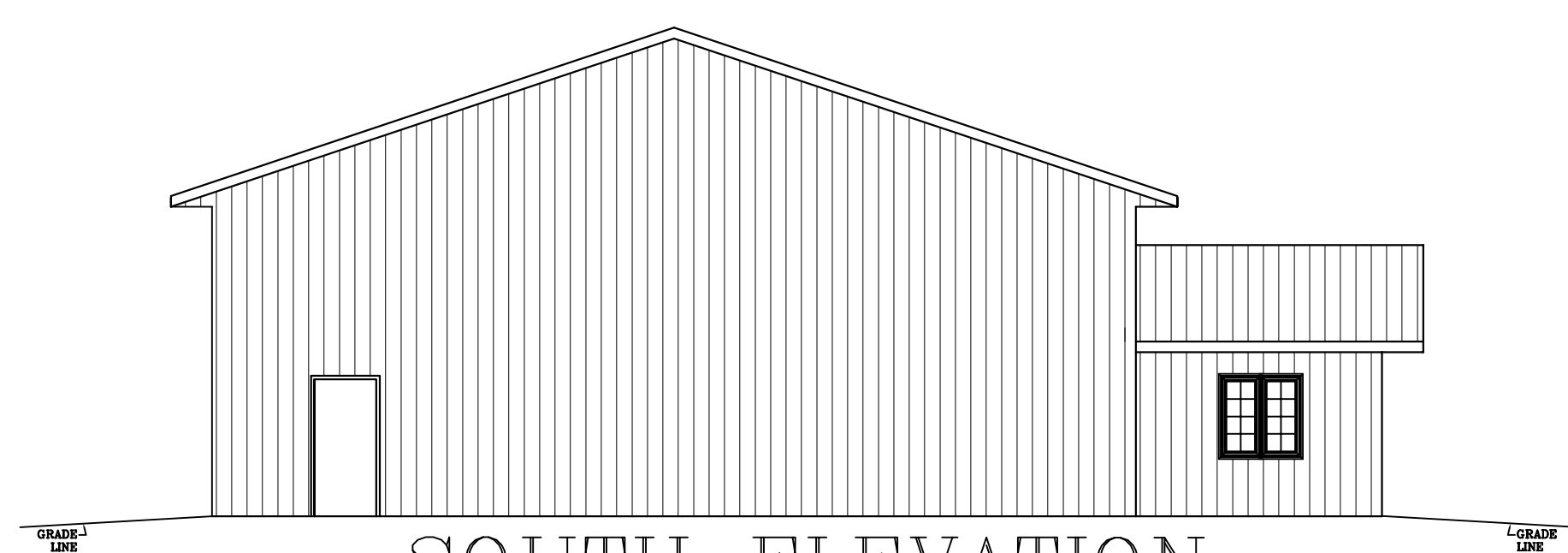
NORTH ELEVATION

SCALE: 1/8" = 1'-0"



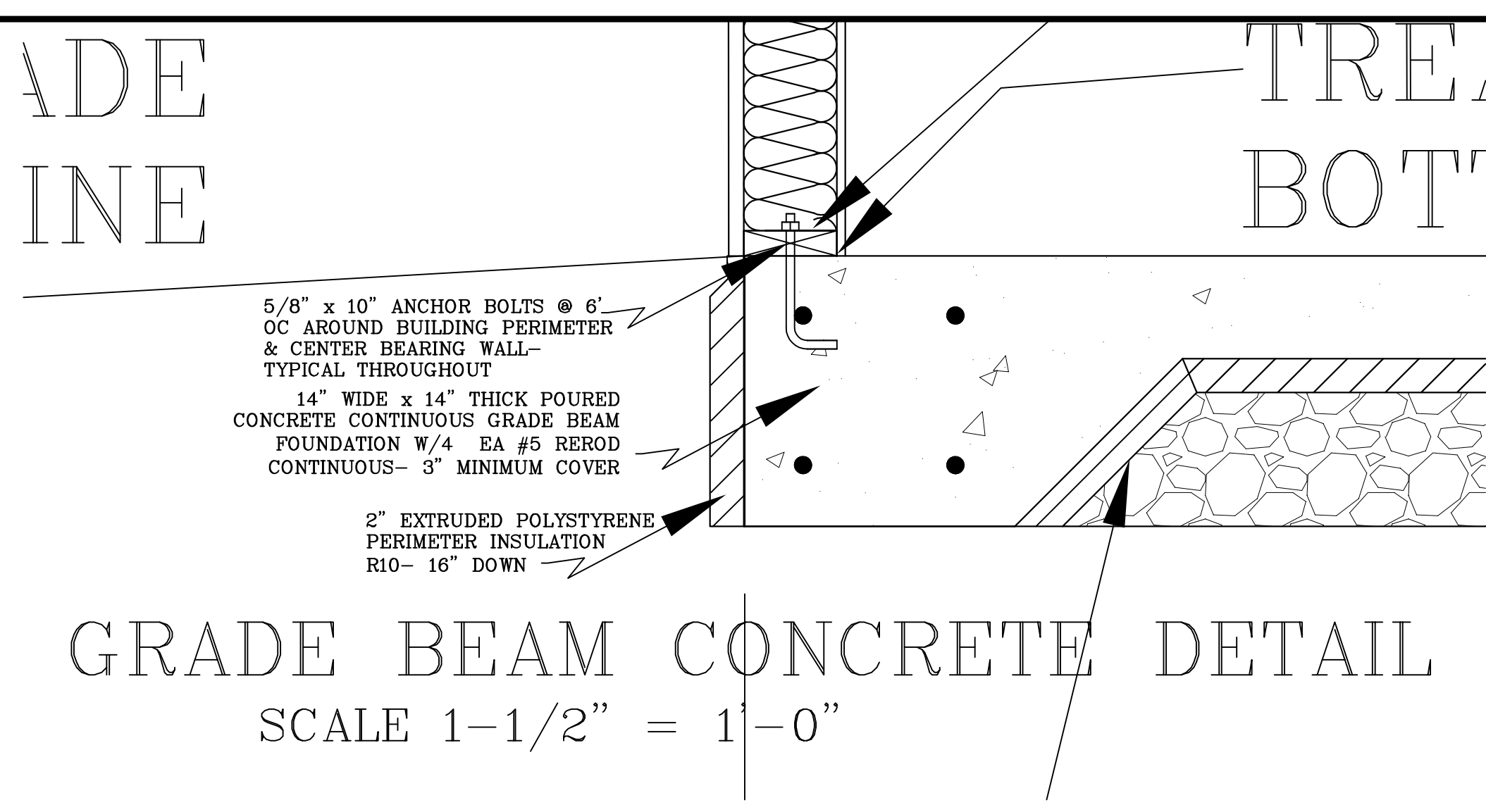
WEST ELEVATION

SCALE: 1/8" = 1'-0"



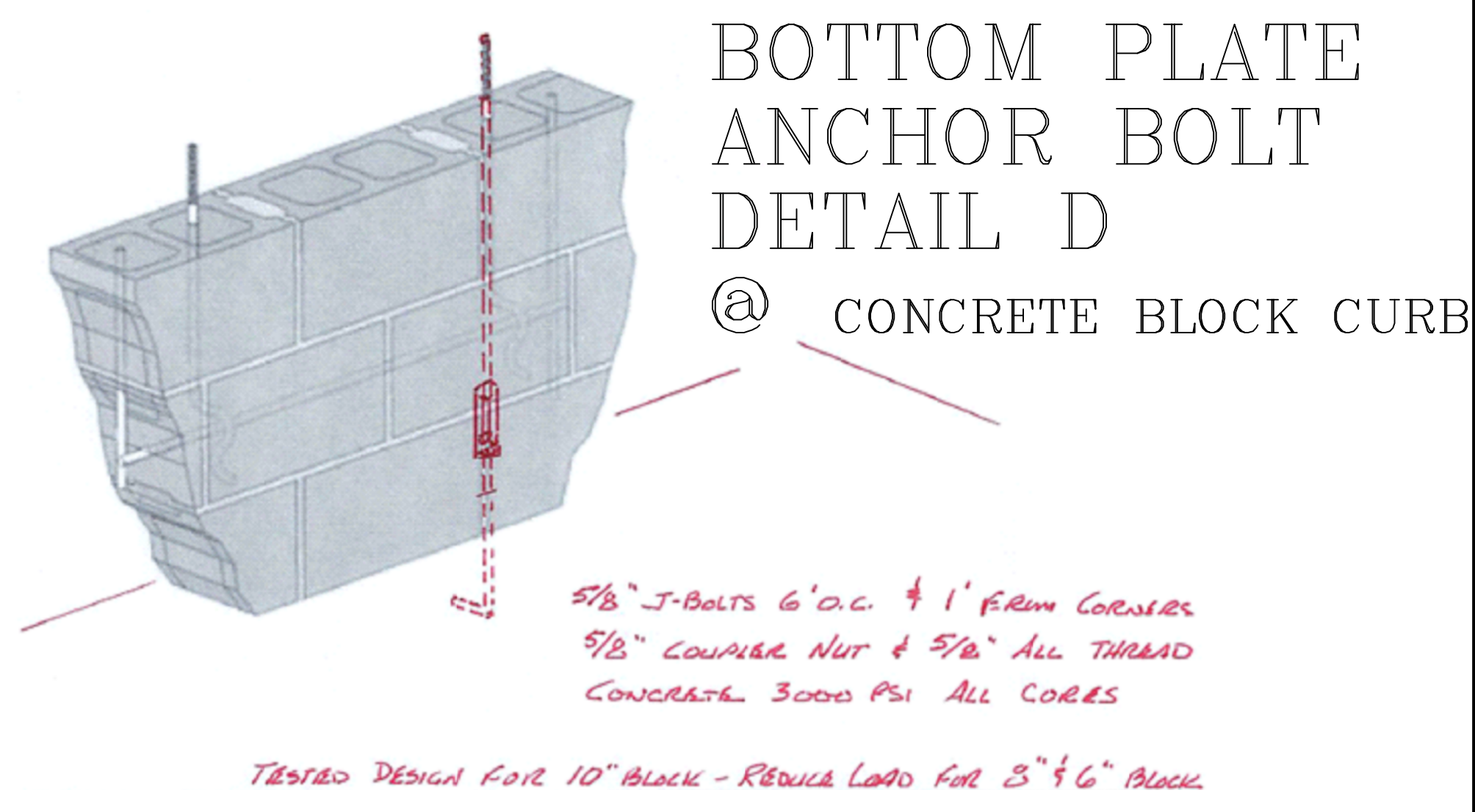
SOUTH ELEVATION

SCALE: 1/8" = 1'-0"



GRADE BEAM CONCRETE DETAIL

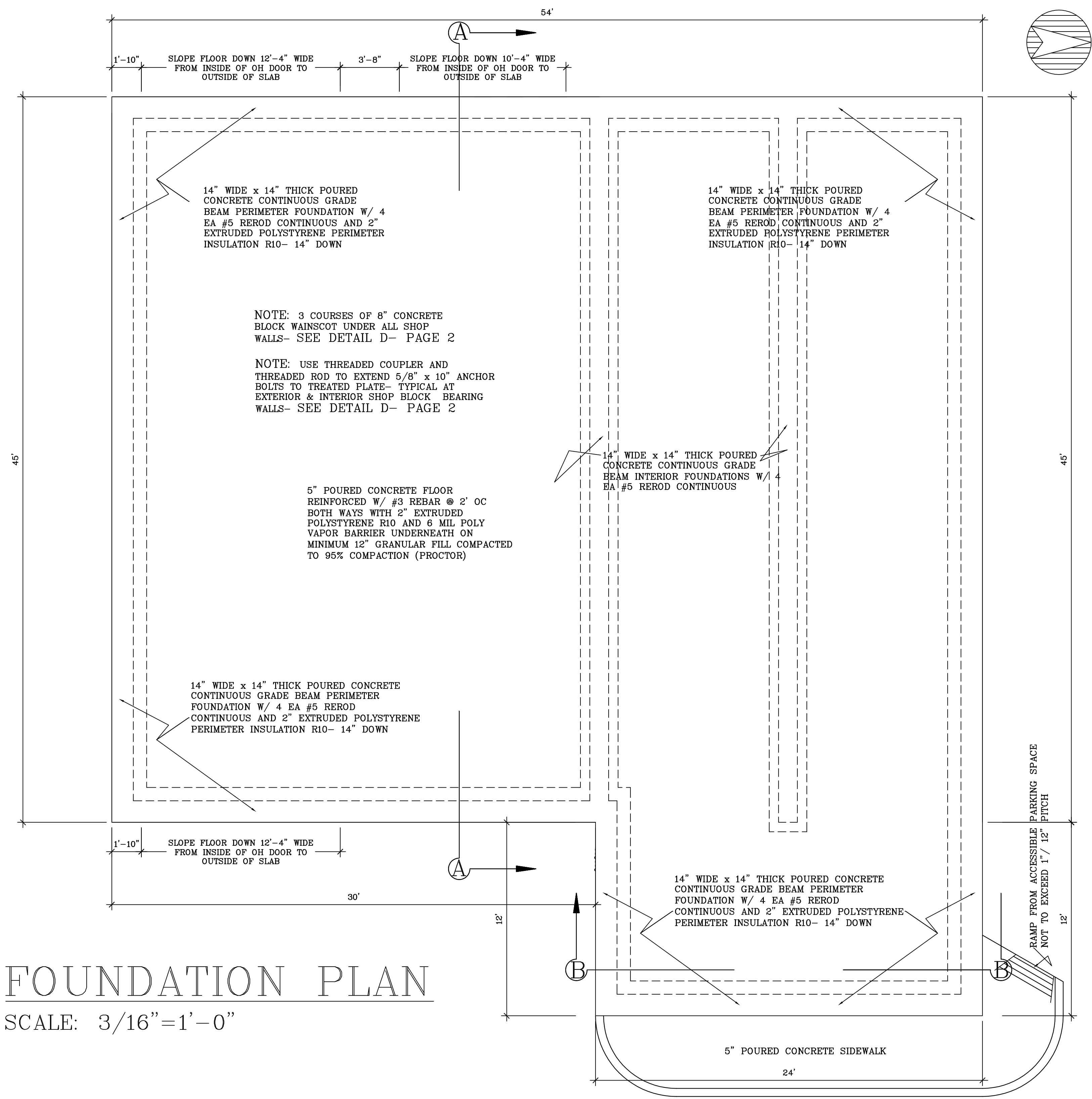
SCALE 1-1/2" = 1'-0"



BOTTOM PLATE ANCHOR BOLT DETAIL D

@ CONCRETE BLOCK CURB

TESTED DESIGN FOR 10" BLOCK - REDUCE LOAD FOR 3" & 6" BLOCK



FOUNDATION PLAN

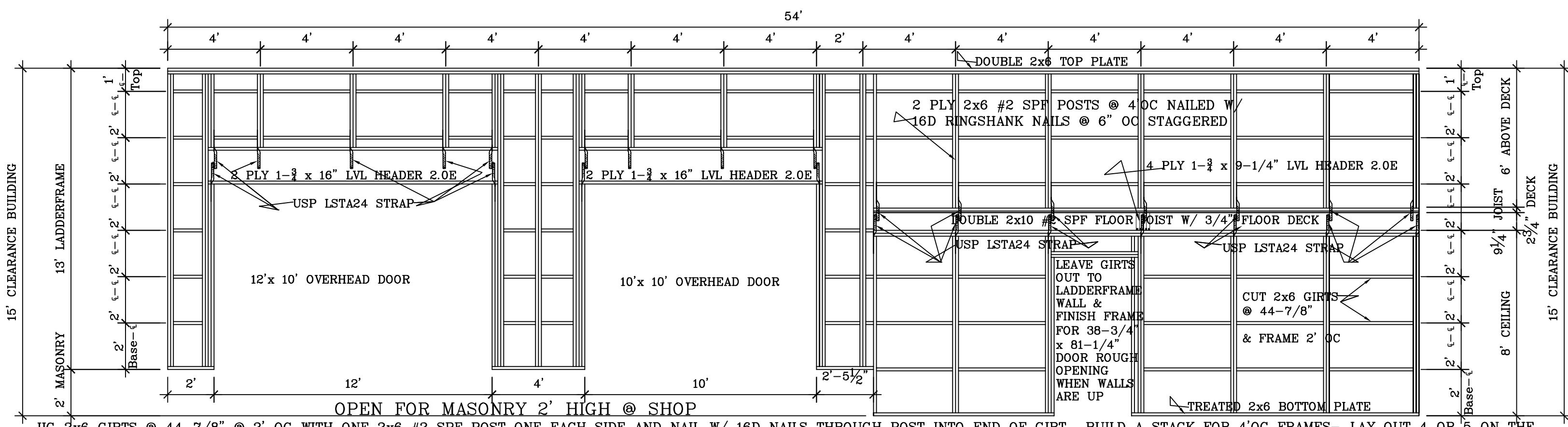
SCALE: 3/16" = 1'-0"

SCALE: Noted	DATE: 2JUN14
NAME: BL	
DWG. NO: 14-178	
CAD FILE: NorthernMotorsSportsLLC State	
ApprovedLadderFrame 2JUN14	
REVISIONS	0

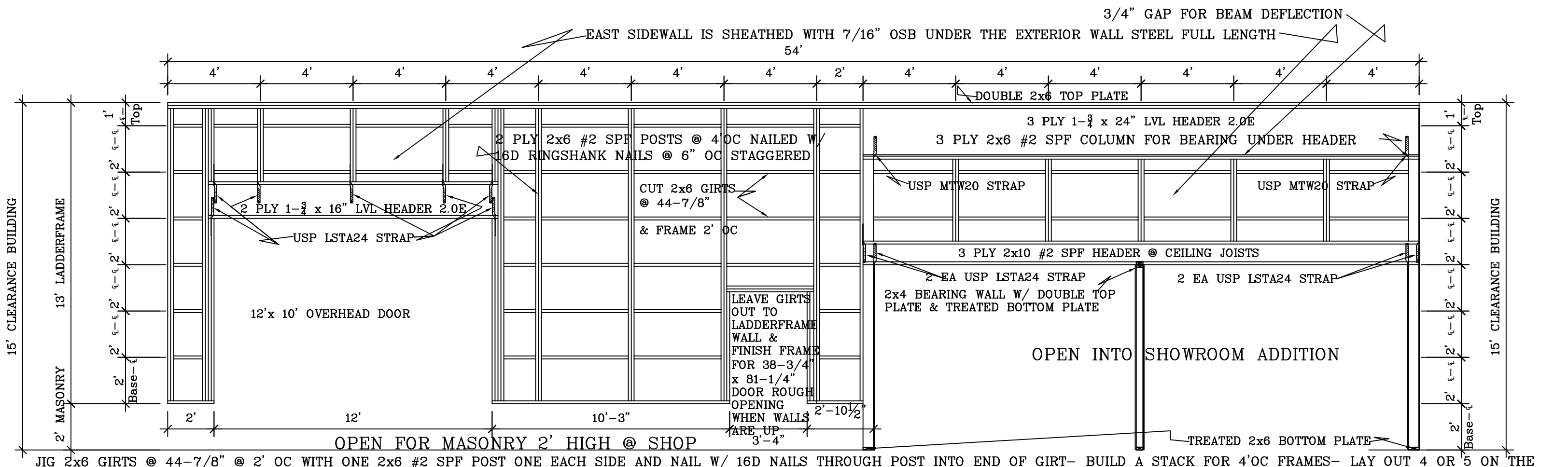
PROPOSED NEW BUILDING FOR
NORTHERN POWER SPORTS LLC
 5165 Linden St
 Town of Laona WI 54541

BESTIMATE LLC
<http://bestimatellc.com>
 bob@bestimatellc.com
 714 E Ninth St
 Marshfield, WI 54449

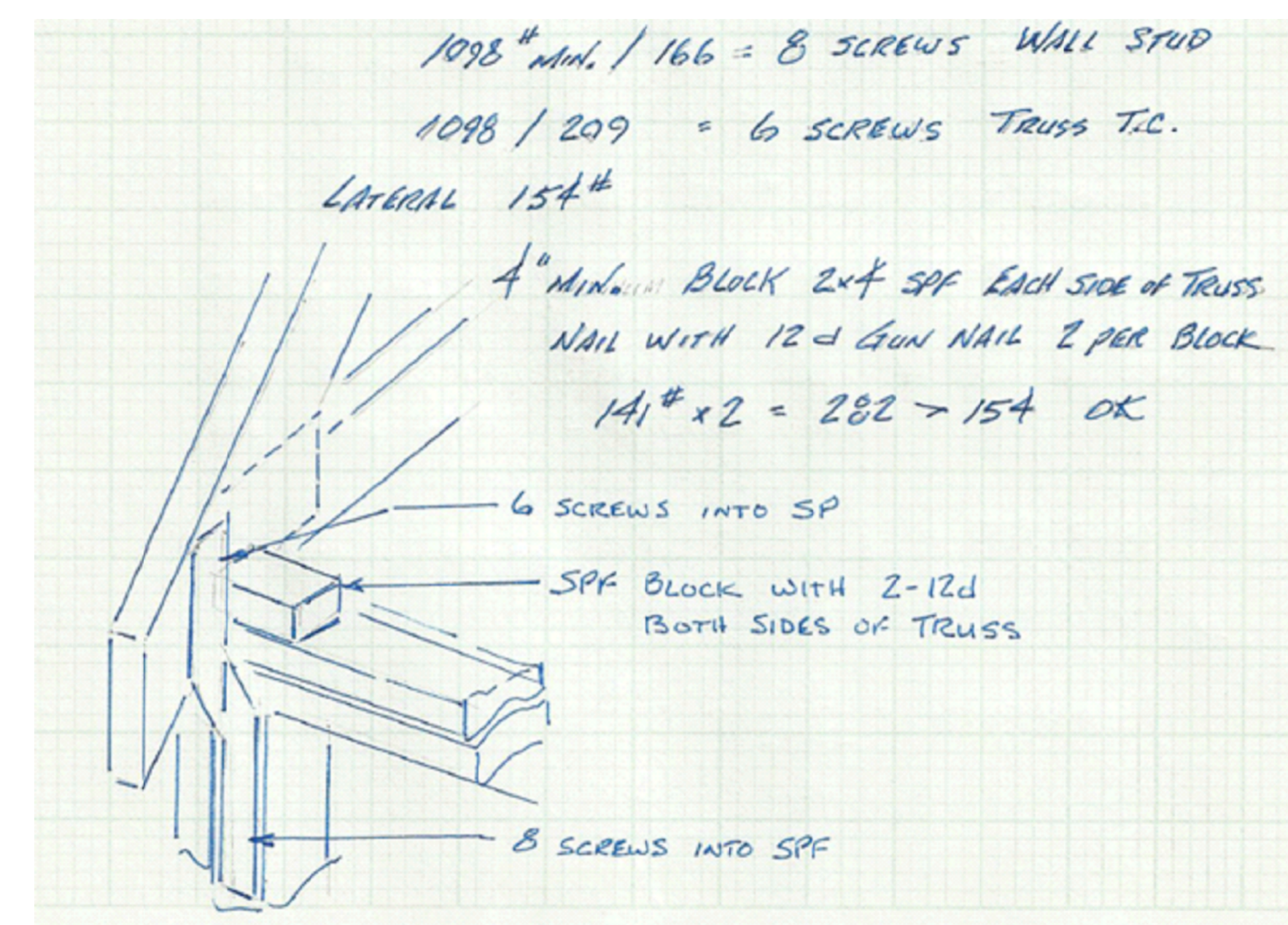
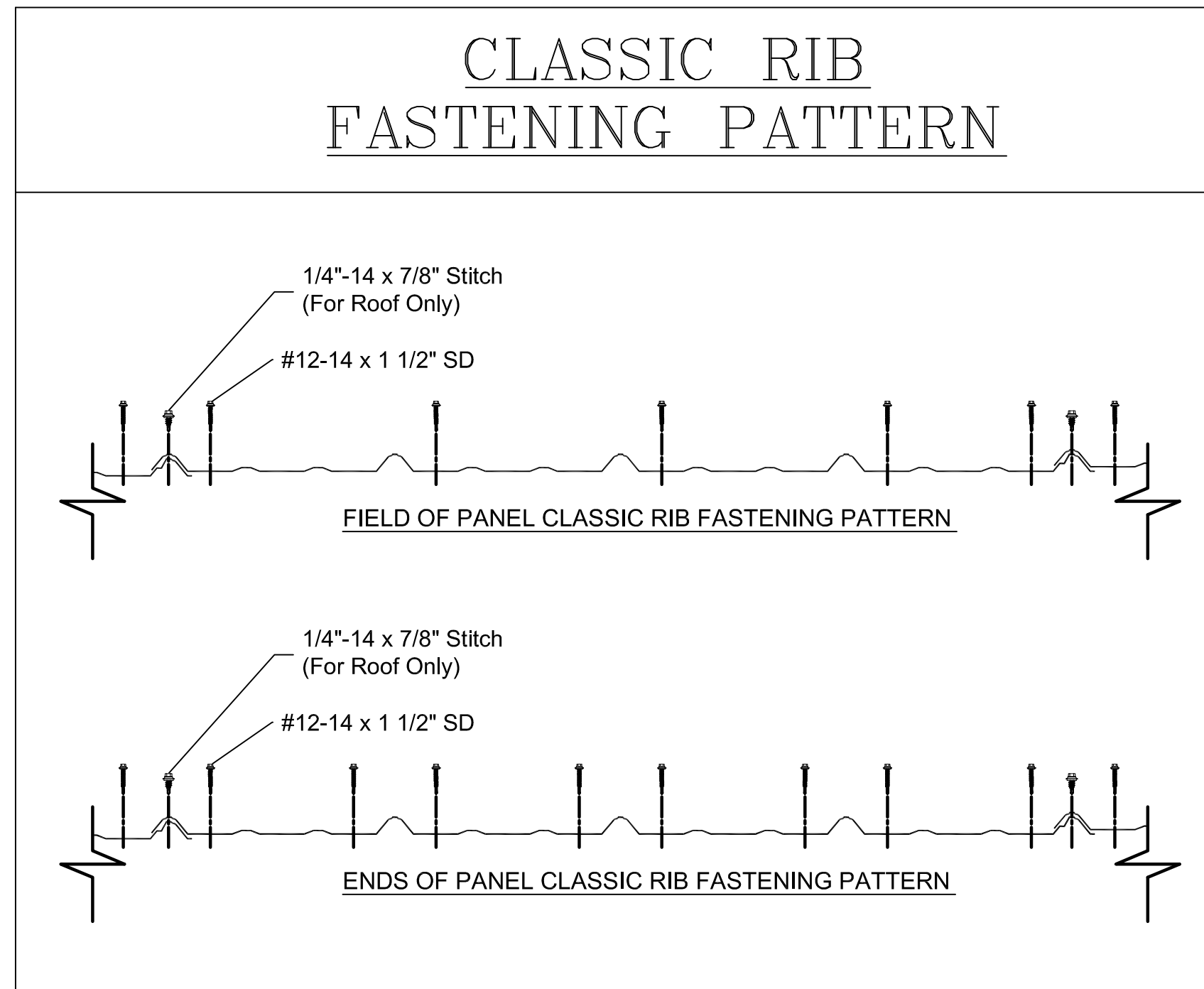




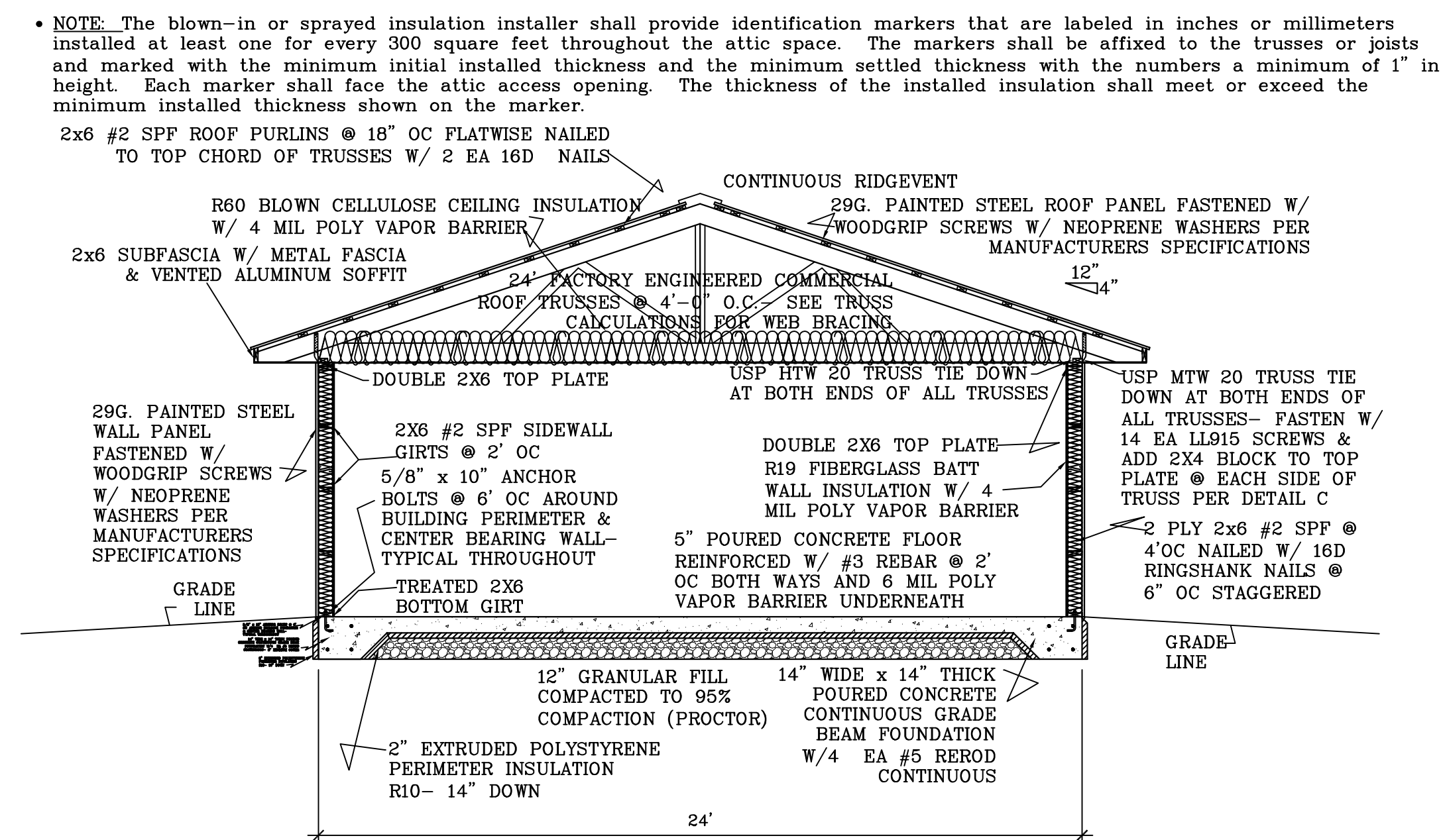
WEST SIDEWALL FRAMING PLAN SCALE: 1/4" = 1'-0"



EAST SIDEWALL FRAMING PLAN SCALE: 1/4" = 1'-0"

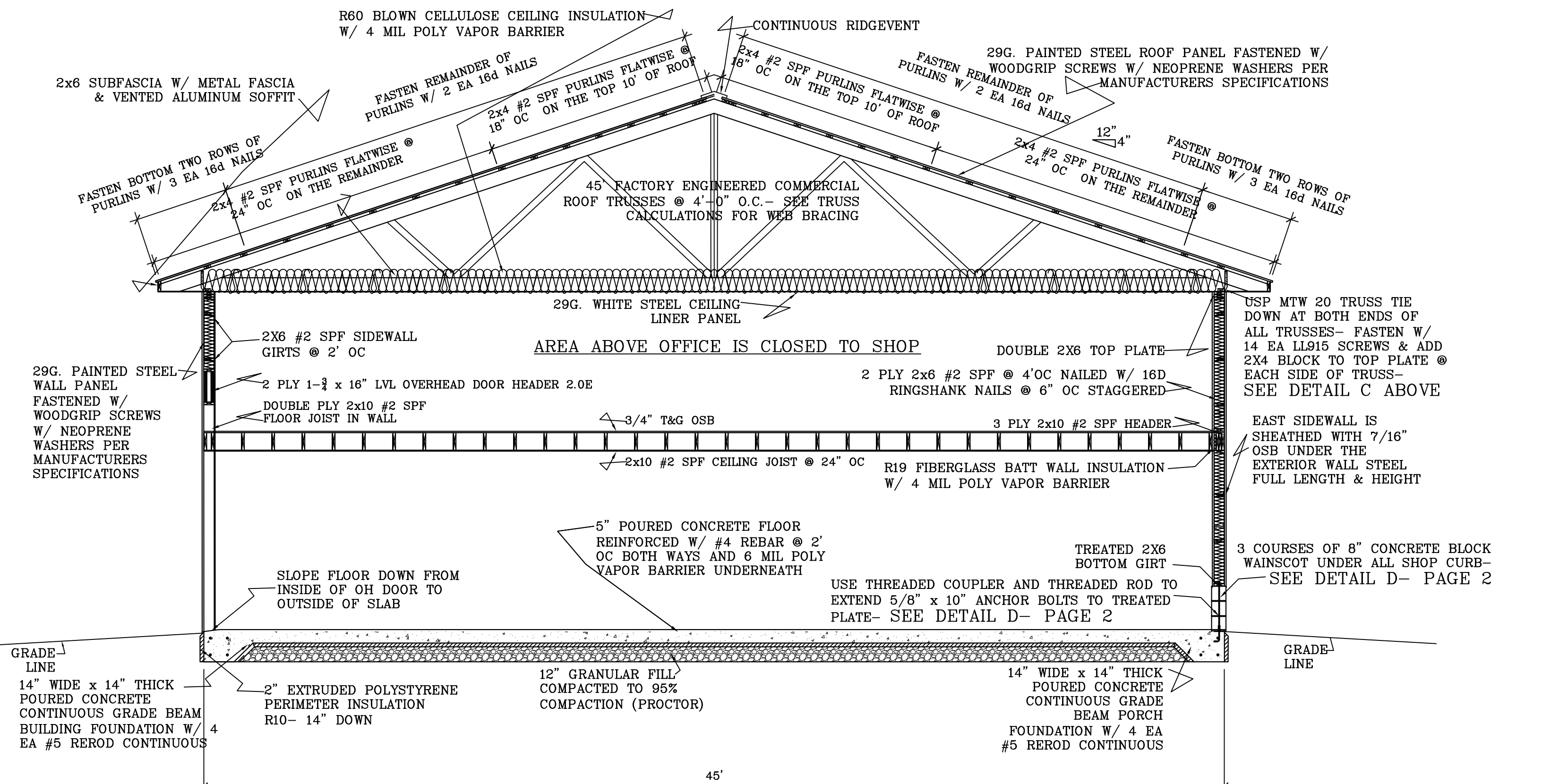


TRUSS TO PLATE ANCHOR DETAIL C



CROSS SECTION B-B

SCALE: 1/4" = 1'-0"



CROSS SECTION A-A

SCALE: 1/4" = 1'-0"

SCALE: Noted	DATE: 2JUN14
NAME: BL	DWG. NO: 14-178
CAD FILE: NorthernMotorsSportsLLC State ApprovedLadderFrame 2June14	REVISIONS: 0

PROPOSED NEW BUILDING FOR
NORTHERN POWER SPORTS LLC
 5165 Linden St
 Town of Laona WI 54541

BESTIMATE LLC
<http://bestimate.com>
 bob@bestimate.com
 714 E Ninth St
 Marshfield, WI 54449