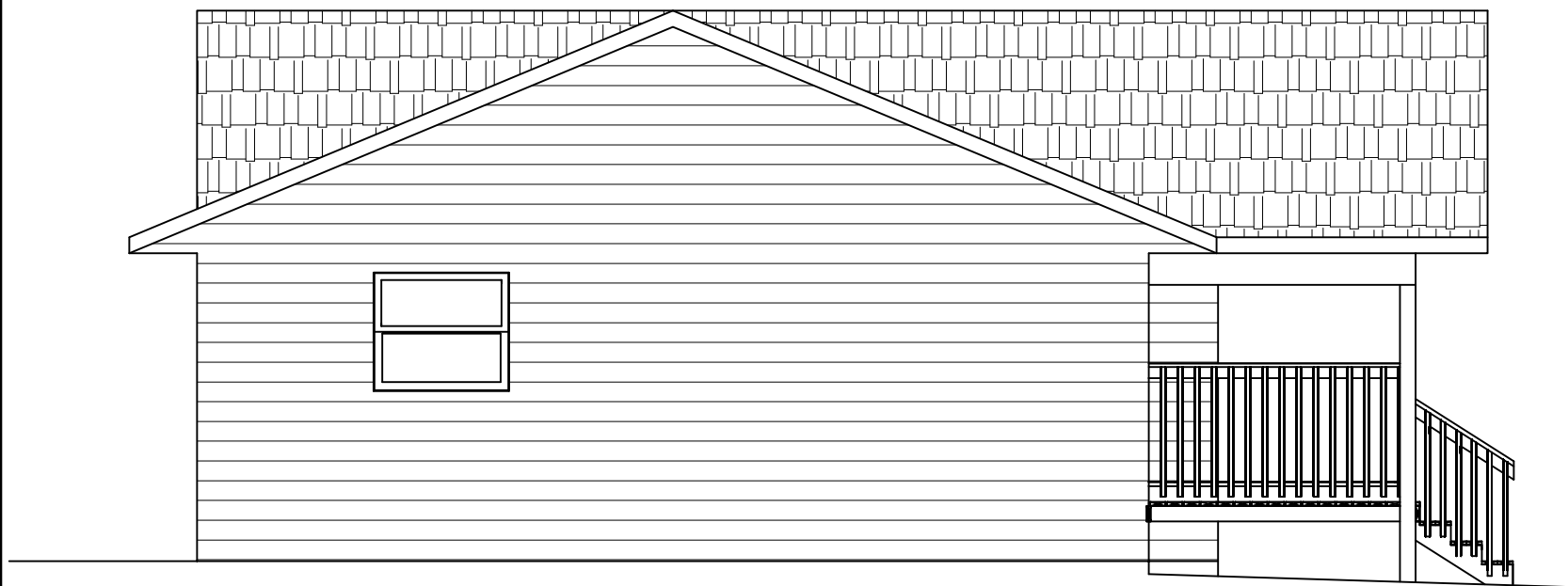
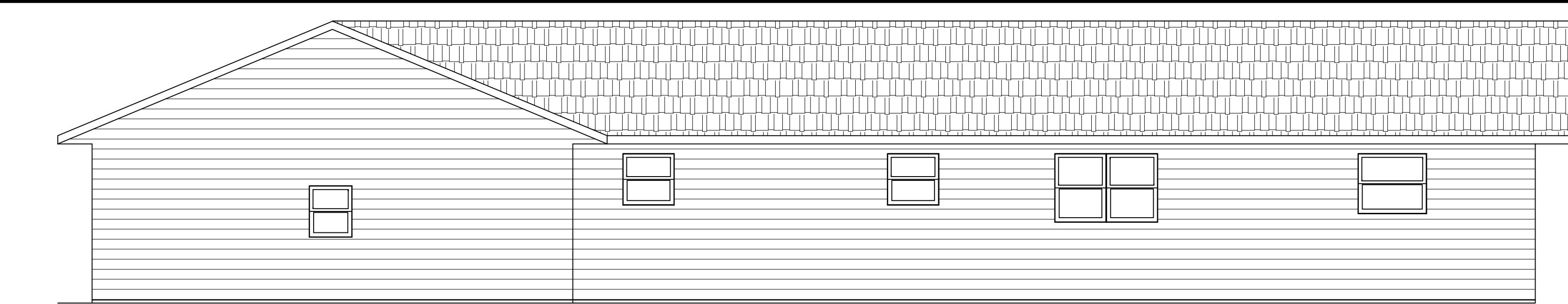


GARAGE END ELEVATION
SCALE: 3/32"=1'-0"



END ELEVATION
SCALE: 3/32"=1'-0"



REAR ELEVATION
SCALE: 3/32"=1'-0"



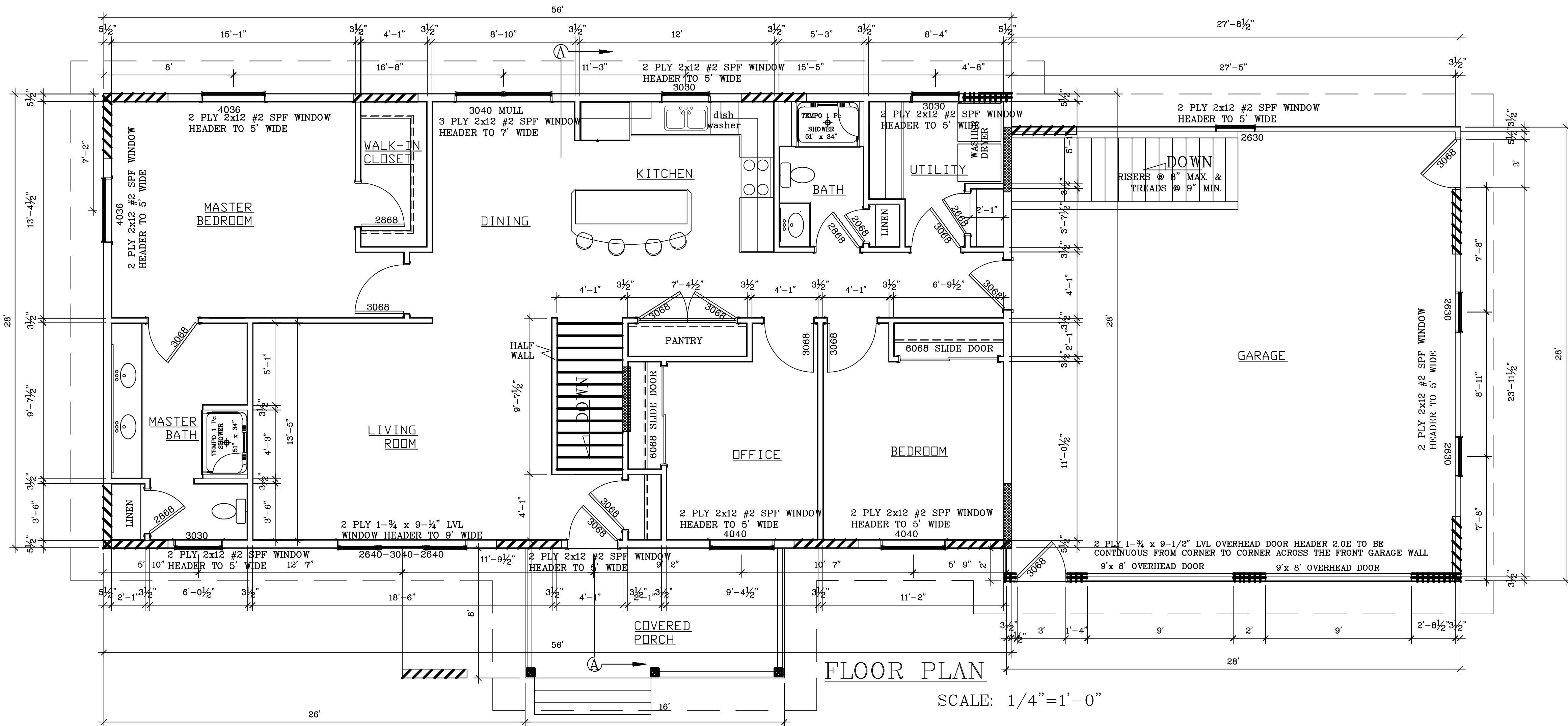
FRONT ELEVATION
SCALE: 3/32"=1'-0"

WALL BRACING	
NOTE: ALL WALL SHEATHING IS 7/16" OSB	
	4' OF WOOD STRUCTURAL PANEL SHEATHING - PANELS NOT TO EXCEED 12.5' FROM THE CORNER AND 25' OC
	CONTINUOUSLY- SHEATHED PER s. COMM 21.25(9)(c) 5. W/ 3" oc Nailing Pattern, Sheathing overlapping Header & 2' Return. Wall line > 16% Braced (per Table 21.25-H), <= 6:1 ratio of Wall Width to Wall Height.
	CONTINUOUSLY- SHEATHED PER s. COMM 21.25(9)(c) 2.&3., W/ 2' RETURN-(per Table 21.25-H > 16% and per Table 21.25-J)
	4' OF GYPSUM WALLBOARD APPLIED TO BOTH SIDES OF WALL- 35' OC- SEE NOTE 1 FOR DETAIL

NOTES:

NOTE 1: INTERIOR BRACE WALL IF REQUIRED TO BE 4' X 4' ON BOTH SIDES OF THE WALL OR 4' X 8' ON ONE SIDE OF THE WALL OF GYPSUM BOARD WITH MINIMUM 1/2" THICKNESS PLACED ON STUDS SPACED A MAXIMUM OF 24" ON CENTER AND FASTENED TO BLOCKING AT PANEL EDGES INCLUDING TOP AND BOTTOM PLATES AT 7" ON CENTER WITH MIN. 1-1/4" TYPE W OR S SCREWS OR 6D COMMON NAILS

NOTE 2: EXTERIOR BRACE WALL STRUCTURAL PANELS WITH MINIMUM 3/8" THICKNESS PLACED ON STUDS SPACED A MAXIMUM OF 24" ON CENTER AND FASTENED TO BLOCKING AT PANEL EDGES INCLUDING TOP AND BOTTOM PLATES AT 8" OC ON PANEL EDGES AND 12" OC ON INTERIOR STUDS WITH MIN. 8D COMMON NAILS



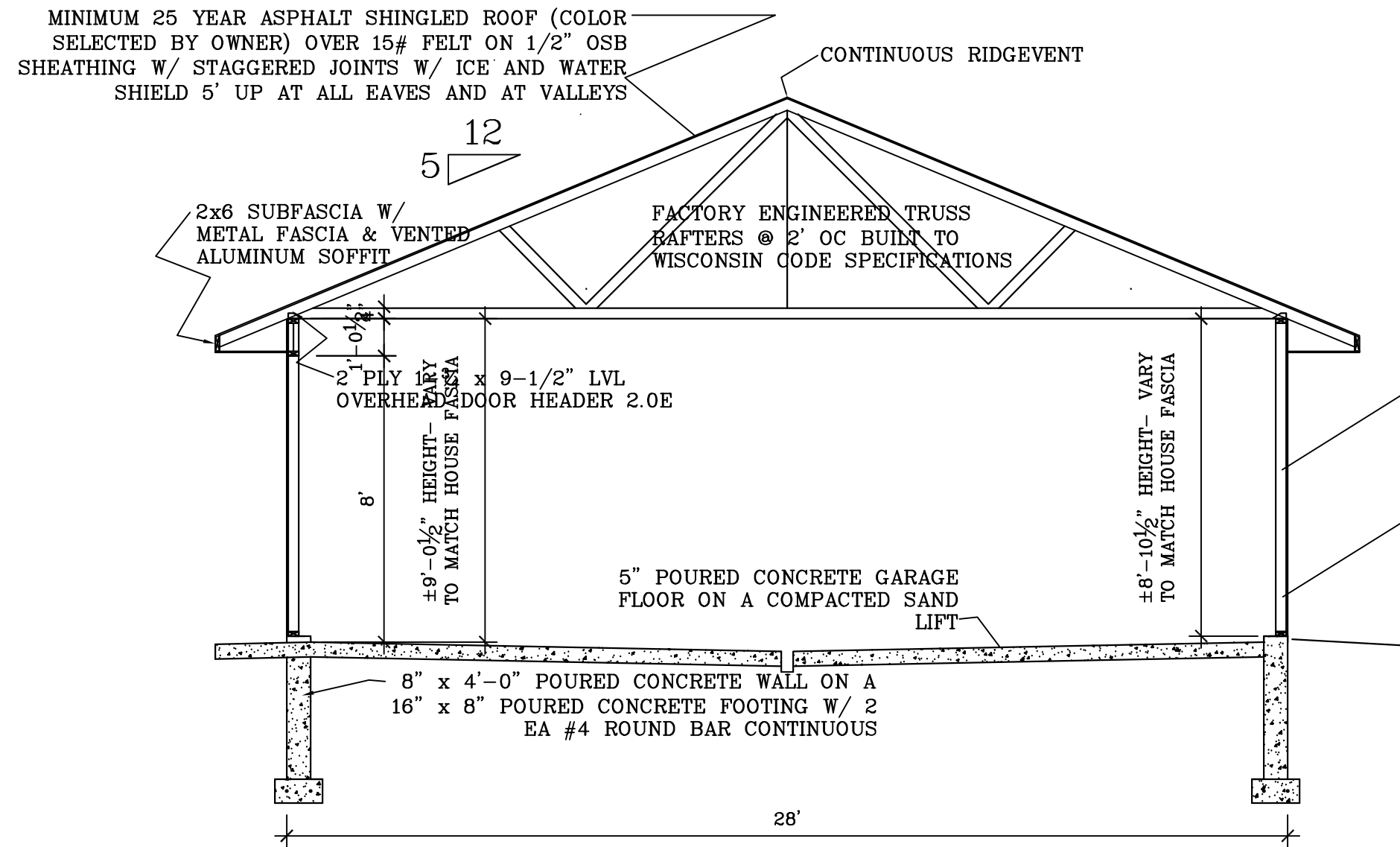
FLOOR PLAN
SCALE: 1/4"=1'-0"

1536sf THREE BEDROOM RANCH

BESTIMATE LLC

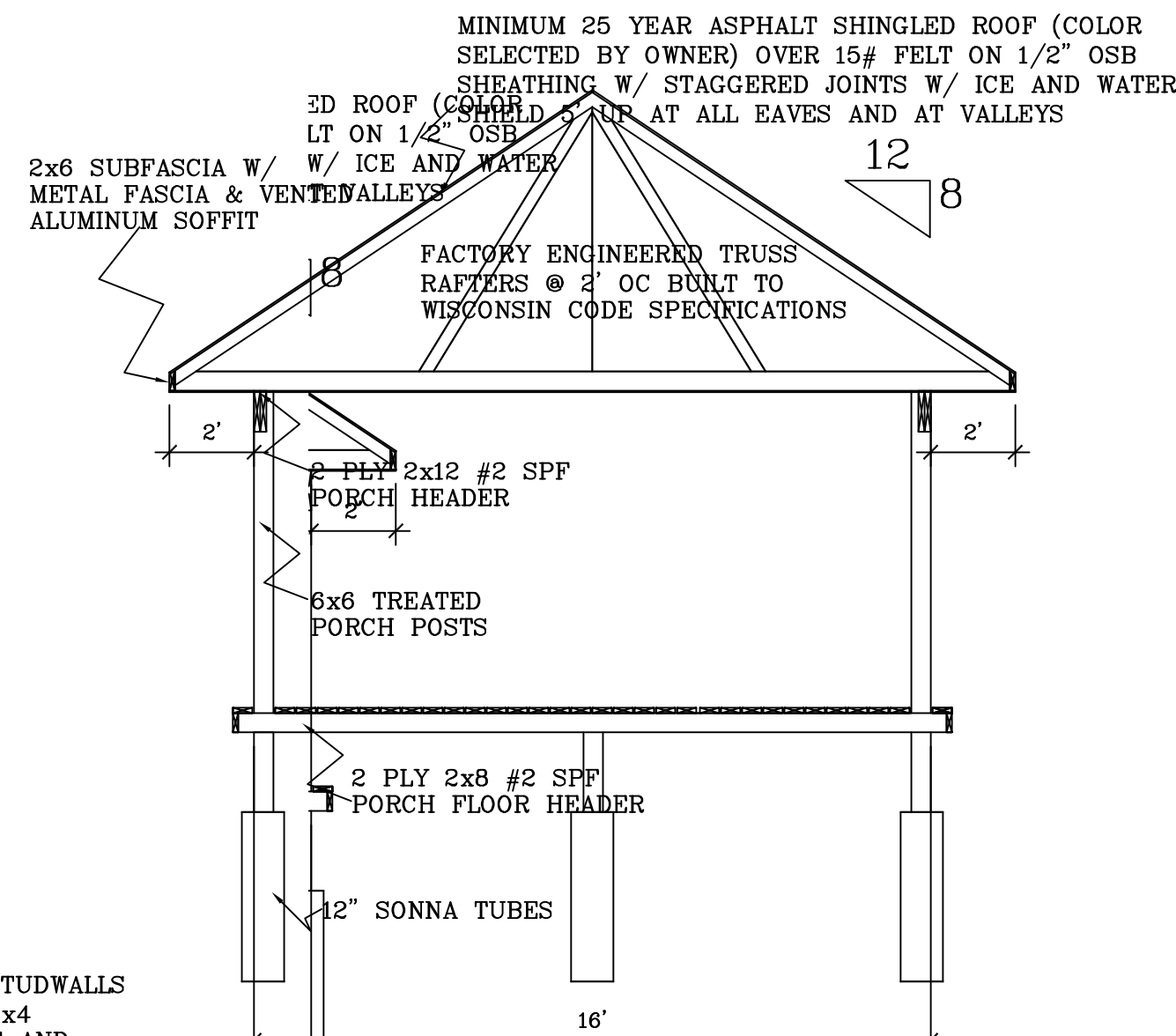


http://bestimatellc.com
714 E Ninth St
Marshfield, WI 54449



CROSS SECTION C-C

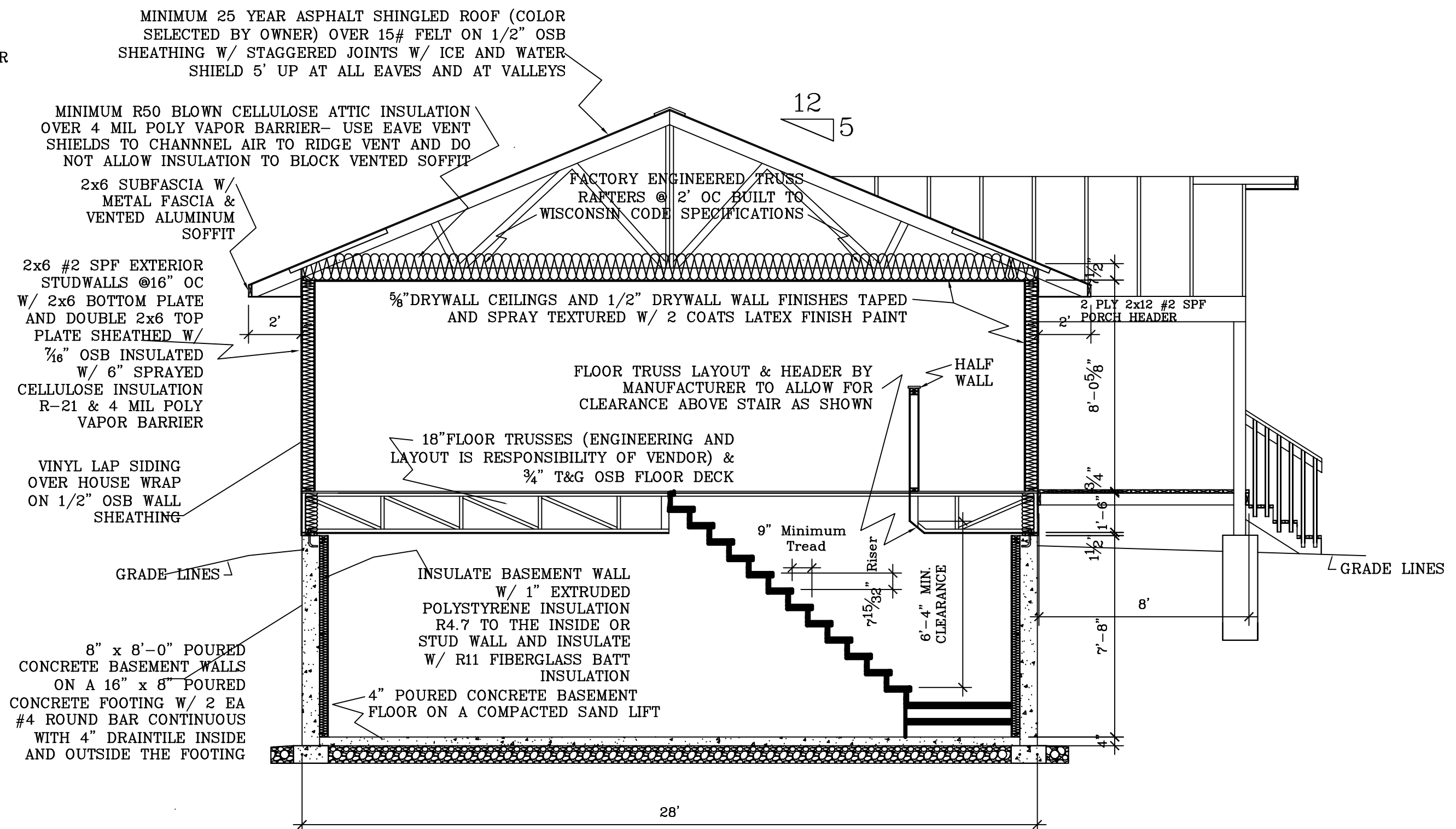
SCALE: 1/4" = 1'-0"



CROSS SECTION B-B

SCALE: 1/4" = 1'-0"

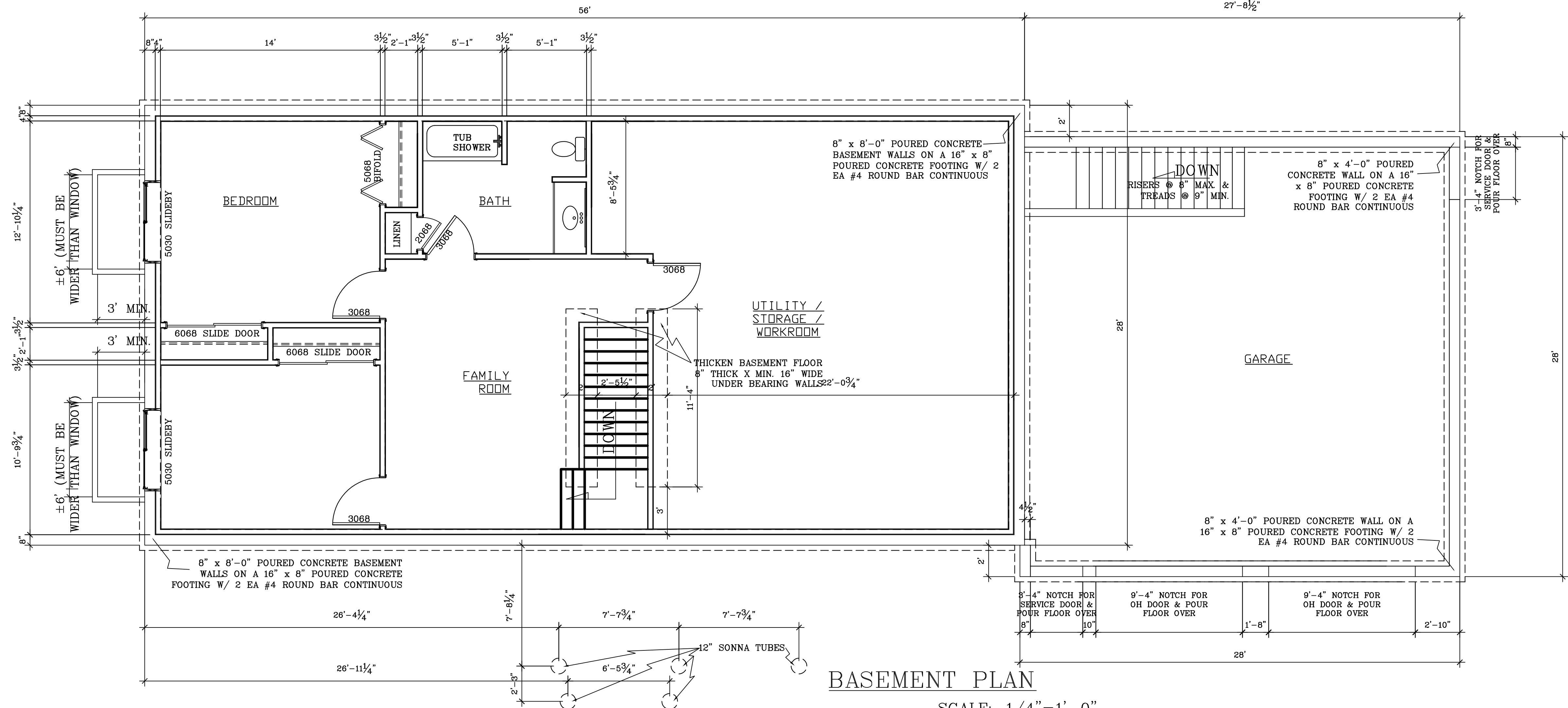
= 1'-0"



CROSS SECTION A-A

SCALE: 1/4" = 1'-0"

PER Comm 21.03 (b) WINDOWS USED FOR EXITING: (1) 1. For any window used for exiting, the lowest point of clear opening shall be no more than 60 inches above the floor.
2. If the lowest point of clear opening is more than 46 inches above the floor, a permanent platform or fixture shall be installed such that a flat surface at least 20 inches wide and 9 inches deep is located no more than 24 inches directly below the clear opening.
3. The topmost surface of the platform or fixture shall be no more than 24 inches above the floor.
4. If the bottom of the areaway is more than 46 inches below adjacent grade or the top of the areaway enclosure, the areaway shall be provided with a ladder or at least one additional step to aid egress. Steps used to comply with this section are exempt from the requirements of s. Comm 21.04.
5. Ladders or other steps used to comply with subd. 4. May infringe on the required area of the areaway by a maximum of 6 inches.
SEE Comm 21.03 for additional information.



BASEMENT PLAN

SCALE: 1/4" = 1'-0"

1536sf THREE BEDROOM RANCH

BESTIMATE LLC

<http://bestimate.com>
714 E Ninth St
Marshfield, WI 54449



SCALE: Noted
DATE: 1/28/13

NAME: BL

DWG. NO.

CAD FILE: 1536sf3bdrmranch28Jan13

REVISIONS:

PAGE NO:

A2 of 2