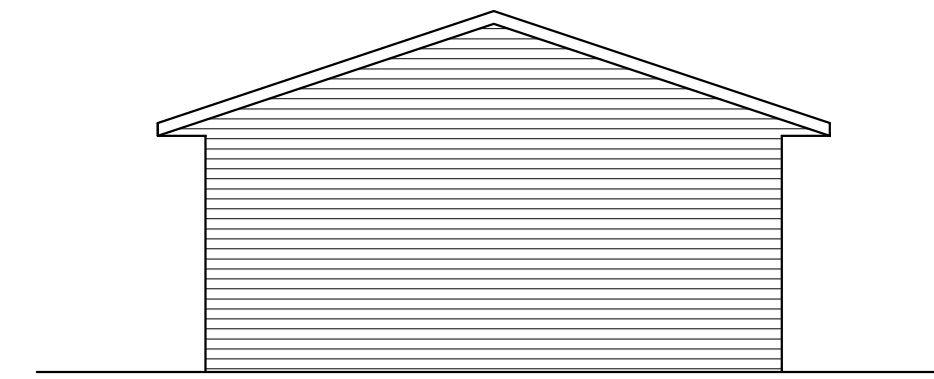
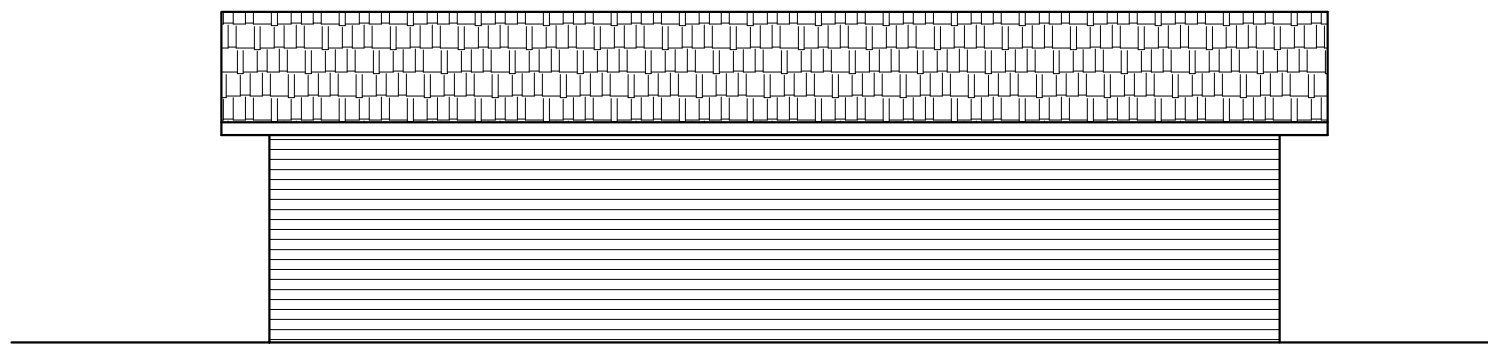


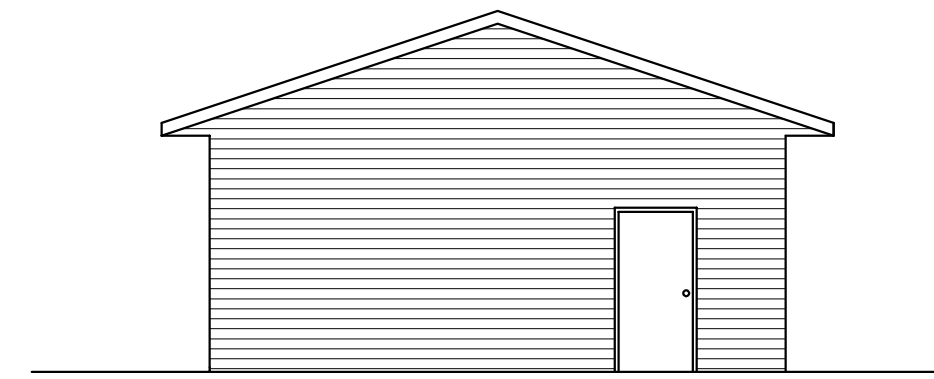
NORTH ELEVATION
SCALE: 1/8"=1'-0"



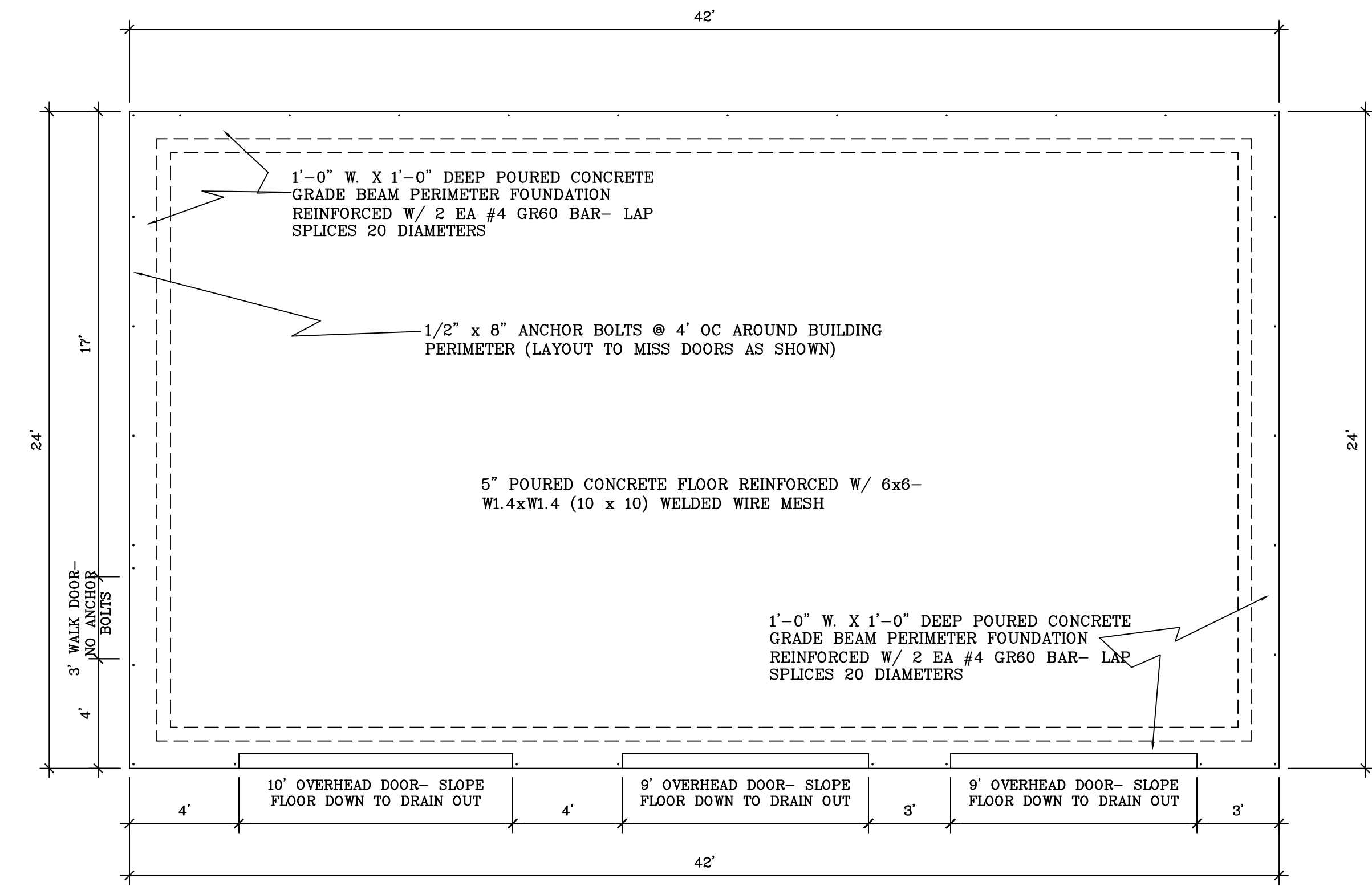
WEST ELEVATIONS
SCALE: 1/8"=1'-0"



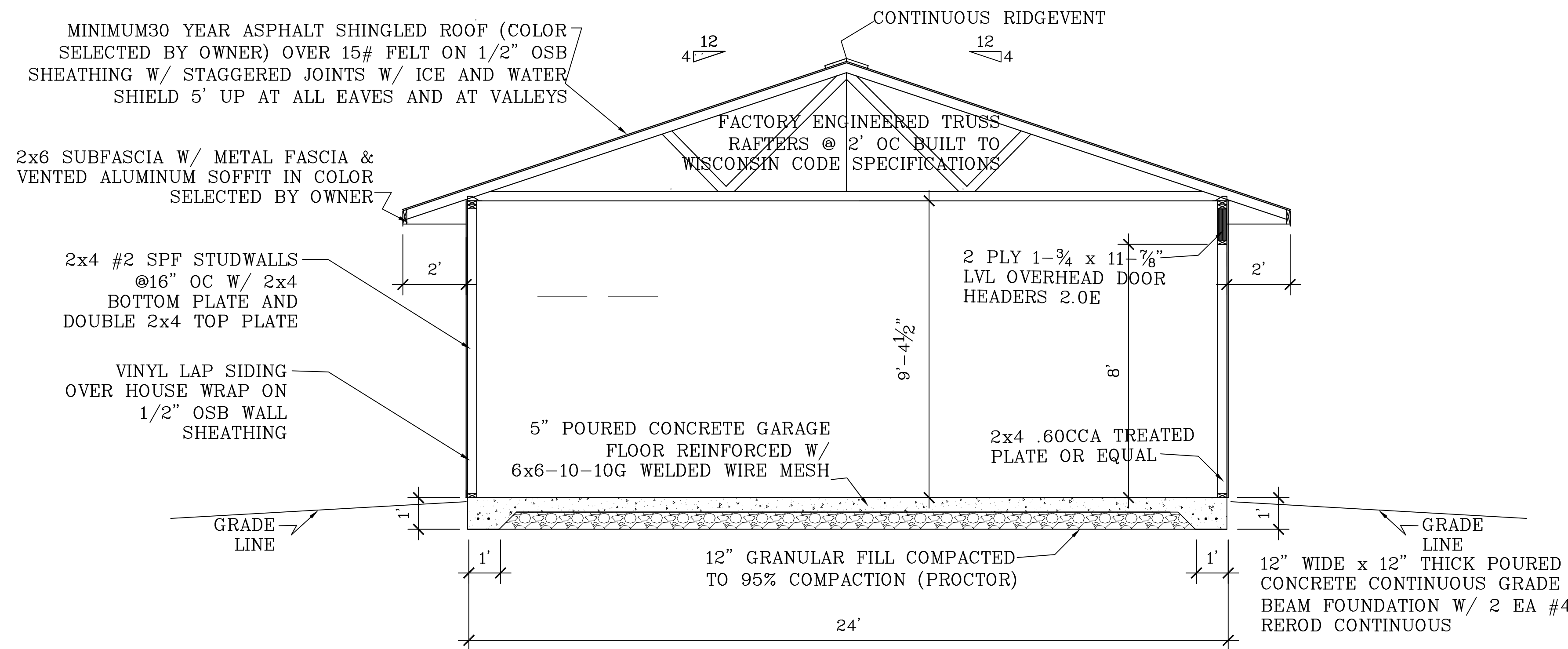
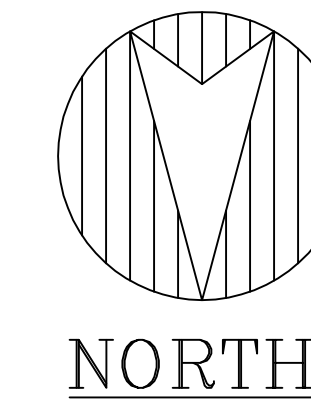
SOUTH ELEVATION
SCALE: 1/8"=1'-0"



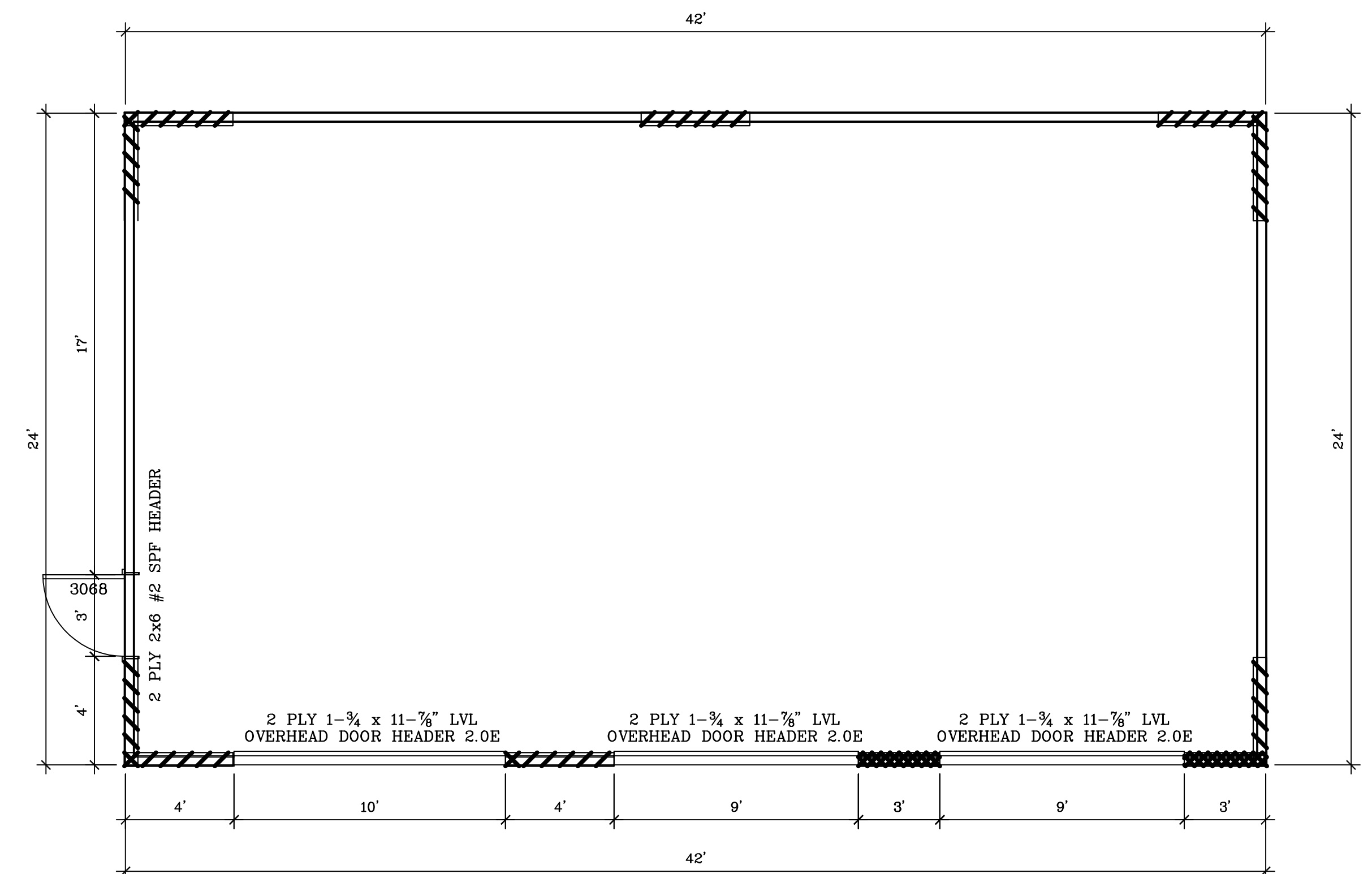
EAST ELEVATIONS
SCALE: 1/8"=1'-0"



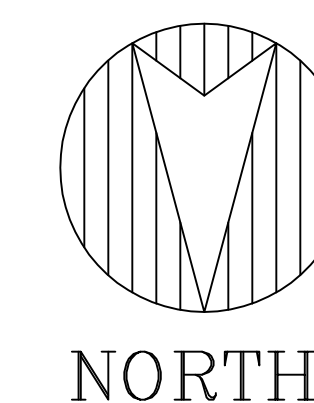
FOUNDATION PLAN
SCALE: 1/4"=1'-0"



CROSS SECTION A-A
SCALE: 1/4" = 1'-0"



FLOOR PLAN
SCALE: 1/4"=1'-0"



NOTES:

NOTE 1: INTERIOR BRACE WALL IF REQUIRED TO BE 4' X 4' ON BOTH SIDES OF THE WALL OR 4' X 8' ON ONE SIDE OF THE WALL OF GYPSUM BOARD WITH MINIMUM 1/2" THICKNESS PLACED ON STUDS SPACED A MAXIMUM OF 24" ON CENTER AND FASTENED TO BLOCKING AT PANEL EDGES INCLUDING TOP AND BOTTOM PLATES AT 7" ON CENTER WITH MIN. 1-1/4" TYPE W OR S SCREWS OR 6D COMMON NAILS

NOTE 2: EXTERIOR BRACE WALL STRUCTURAL PANELS WITH MINIMUM 3/8" THICKNESS PLACED ON STUDS SPACED A MAXIMUM OF 24" ON CENTER AND FASTENED TO BLOCKING AT PANEL EDGES INCLUDING TOP AND BOTTOM PLATES AT 8" OC ON PANEL EDGES AND 12" OC ON INTERIOR STUDS WITH MIN. 8D COMMON NAILS

WALL BRACING

NOTE: ALL WALL SHEATHING IS 7/16" OSB

	4' OF WOOD STRUCTURAL PANEL SHEATHING - PANELS NOT TO EXCEED 12.5' FROM THE CORNER AND 25' OC
	CONTINUOUSLY- SHEATHED PER s. COMM 21.25(9)(c) 5., FIG 21.25-K, W/ 2' RETURN-(per Table 21.25-H > 16% and per 6:1 ratio)
	CONTINUOUSLY- SHEATHED PER s. COMM 21.25(9)(c) 2.&3., W/ 2' RETURN-(per Table 21.25-H > 16% and per Table 21.25-J)
	4' OF GYPSUM WALLBOARD APPLIED TO BOTH SIDES OF WALL- 35' OC- SEE NOTE 1 FOR DETAIL

SCALE: Noted
DATE: 9/22/2012
NAME: BL
DWG. NO: 12-125
CAD FILE: ZimmermanBrosGarage
22Sep12
REVISIONS:
0

PROPOSED GARAGE FOR
ZIMMERMAN BROTHERS CONSTRUCTION
2308 S. HUME MARSHFIELD WI 54449

BESTIMATE LLC
http://bestimatellc.com
bob@bestimatellc.com
714 E Ninth St
Marshfield, WI 54449
715-506-0040

